

Locus 49982	Dor 1993	Fld G	Sq A132	Loc. type Installation (Card I)	
Open 02/08/93	High 13.41	at S	Low 13.34	at N	Seals: _____
Close 04/08/93	13.34	N	13.29	S	Sealed by: _____
Floor: type _____	Width 0.2		Vol _____		Locl 9978, 9980
Length 1.6	Remove _____		Drawn? _____		above _____
Value _____					below _____
Photo # (1) See Isra	Photo # (2) _____				
Written by: RJS	Checked by: JRZ				

Unit _____	Phase _____	Stage _____	Stratum _____	PoM _____
-------------------	--------------------	--------------------	----------------------	------------------

Summary

Opened: 19978 came down as strange line of clay plaster which was numbered 19982.

Limits (N) Unexcavated fill

(S) Fill below 19704.

(E) Unexcavated fill

(W) Unexcavated fill.

Closed: End of season - Not closed - Not excavated.

Matrix: A line of probably clay plaster makes a rounded corner - possibly a wall or installation. Within the rectangle are various burnt mudbricks and in the center is another layer of clay plaster forming a smaller rectangle than the larger. A complete mudbrick was seen E. of 19982.

Relations: 19978 and 19980 cover 19982. When excavating 19978 we probably removed the upper few cm. of the installation.

To the S. 19982 continues into the destruction material below 19704. To the N, W, and E destruction material appears to reach the installation.

The nature of the installation is uncertain. In the section below 19704, the clay line makes an arch and it could be a kind of trough with two arches - or a single arch running all the way around it with the trough in the center (this may be the smaller clay plaster rectangle). If so the E. arch is in line with 19704 (the inexplicable road/balustrade) is A132. 19982 may also relate to 19805, a similar installation in A132 which reached the E face of 19704, though 19805 is much smaller.

The high elevation for opening is the top of the w. arch in section

Additional Observations/Value: High value; inexplicable installation in the destruction.

Locus L 9982	Dor 19,4	Fld G ₁	Sq AI32	Loc. type Mystery Installation card 2
Open Date 2,8/07/44	High at .	Low at .	Seals: 	
Close Date 0,5/0,8/44	.	.	Sealed by: 	
Floor: type CIP	.	.	Loci 1,8,0,60	
Length 3,1	Width 0,8	Vol	above	
Value	Remove	Drawn? No	Loci below	
Photo #(1) 117724	Photo #(2) 117725			
Written by: J.R.Z	Checked by: J.R.Z			

Unit	Phase	Stage	Stratum	PoM
------	-------	-------	---------	-----

Summary

Opened: When L18060 came down on the trough-like installation

Limits (N) L18090
 (S) see card for 192 of L980
 (E) L18058, L18069, L18072, L18073, L18075
 (W) L18090, L18068
 Closed: Not closed at end of season

Matrix: Upper South portion preserves trough-like shape. North end was shaved-off when F9953 was laid there, leaving only the interior and exterior lines of the walls on each side. The installation seems to be made of mudbricks, plastered over with more mud plaster to give an even surface. The top ca. 20 cm of this plaster and brick were fired hard in the destruction fire, but the lower part, to floor level, was not so fired. Nor

Relations: was the north end wall fired. Thus only the south end could be traced, and even here the difference between installation and surrounding debris was difficult to establish. At end of season much debris still adhered to the north half of L9982. The trough is 40 cm wide by 25 cm deep. The walls of the trough, where preserved, are 15 cm thick.

Relations: For relations above to N see card for 193. On the S/L9982 is covered by L18060, but not sealed. To the North L18090 reaches L9982. To the South. To the East L18058, L18069, L18072 and L18075 reach L9982 but L18073 was built against L9982. To the West L18090 and L18068 reach L9982. No clear trace of a bin similar to 18073 was found west of L9982.

The relation of stone floor 18061+18068+18087+18090 (with white floor patches between or beneath the stones), and grey ash floor 18058+18075 to L9982 is uncertain at present. Presumably L9982 was built on some type of floor

Additional Photos: 117726-732, 117734, 117738
 Additional Observations/Value: Supreme Significance. Sealed in destruction deposit on stone and dirt floor and associated with basalt vessel and grinders, in situ pottery and subsidiary by



117777



117779



117849-B



117849-A



117827



117772

Locus

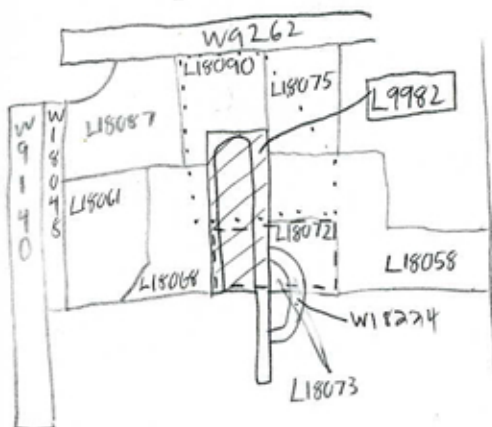
L 9982

Floor covers all surrounding loci
stones to W. Grey soil to E.

Sketch plan AT 32-33

NA

Built
with
AH32



... = L9978 above 9982
--- = 18060 above 9982

L18072+18073=18069
above

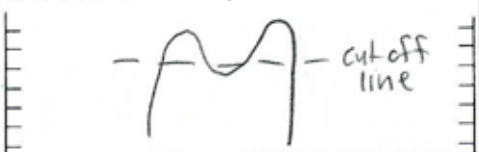


117778



117748

Section A



Section B



Area below 9978 (= make up of F9953) is where top of trough was cut off:

originally as in section A, now as in B
Trough preserved much better in area of 18060.

Locus L 9982	Dor 1917	Fld G	Sq A132	Loc. type Installation (Card II)
Open	Date 7/19/17	High at 11.39 E.C.	Low at 13.17 C	Seals: L18221
Close	7/10/17	12.76 N	12.67 S	Sealed by:
Floor: type				Loci
Length 3.1	Width 0.8	Vol		above
Value 1	Remove 7/19/17	Drawn? Yes		Loci
Photo #(1)		Photo #(2)		below
Written by: JCM		Checked by: JAZ		
Unit	Phase	Stage	Stratum	PoM

Summary

Opened: Removed installation to go deeper in A132

Limits (N) See Prelim Cards for limits and relations ('97-'94)

(S)

(E)

(W)

Closed: Came down to level of F18068 and F18058; removed installation

Matrix: Made up of broken mudbrick debris various sized stones. Red and orange soil with some charcoal. The surface was plastered hard to contain the assorted building materials. Three very large stones appear to have formed the core of the installation.

Relations: L9982 installation is reached by stone slab F18068 above and L18216 (Floor makeup and fill below) below on the west and north. F18216 also probably reached L9982 on the west and north but this is not clear. F18058 reaches L9982 on the east. F9805 and W18224 also reach L9982 on the east. L9982 covers and seals the eastern part of L18221.

White Floor 18058 and 18216 are the same. Stone Slab Floor 18068 was added on the west side after the white floor was made to reach the installation L9982 over the entire area of the room in which L9982 was constructed.

L9982 also continues South into the Bulk of A131. It continues as the poorly preserved eastern side W9804. Due to its poor state of preservation in A131 the southern end of the installation L9982 could not be determined.

L9982 floats above W18229

Strain in west Bulk of A131 suggests L9982 may have continued over W9800 for some distance (see section 2)

Additional Observations/Value: High value. Excavated materials of important feature



143675



143676

Possible Extensions of Installation into #131



166224



166223



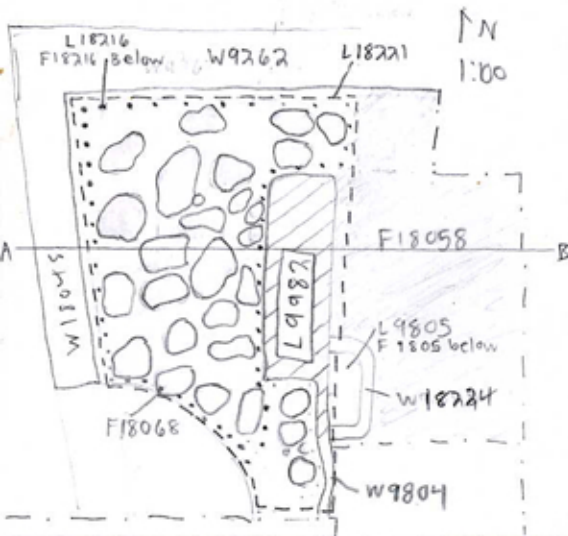
166227



166225

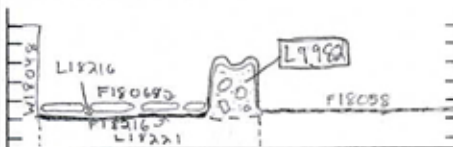
Locus
11 9, 98, 3

Sketch plan



Photo

Section A-B



Section 2 West Bulk AI31

