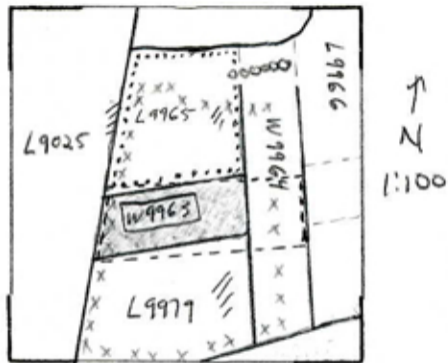


Sketch plan W9963



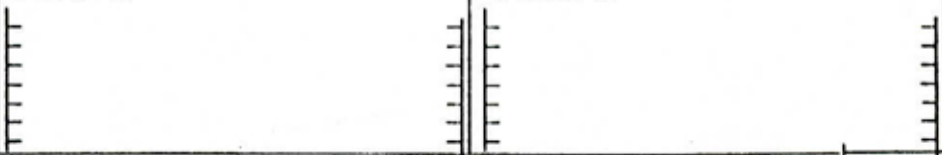
- L 9984 below *//// = Slours*
- L 9956 above *xxx = 9895*

Photo

Photo

Section

Section



Locus W 9963	Dor 19 ⁹⁴	Fld 16	Sq A131	Loc. type MUDBRICK WALL CARD II
Open Date 04/07/94	High at 13.41	Low at 13.39	Seals: _____	
Close 01/08/94	12.96	12.95	Sealed by: _____	
Floor: type _____	Width 0.8	Vol _____	Loci _____	
Length 1.8	Remove _____	Drawn? YES	above _____	
Value 1/4	Photo #(1) see I _{cm}	Photo #(2) _____	Loci _____	
Written by: JCM	Checked by: JIRZ		below _____	

Unit _____	Phase _____	Stage _____	Stratum _____	PoM _____
------------	-------------	-------------	---------------	-----------

Summary _____

Opened: CONTINUED EXCAVATING ALONGSIDE W9963. SEE CARD I FROM 1993 SEASON

Limits (N) L18016
 (S) L18003, L18024, L18071
 (E) W9964
 (W) BAULK UNDER DRAIN L9025

Closed: BOTTOM OF W9963 WAS REACHED BUT NOT REMOVED, AND THUS NOT CLOSED

Matrix: SEE CARD I, 1991

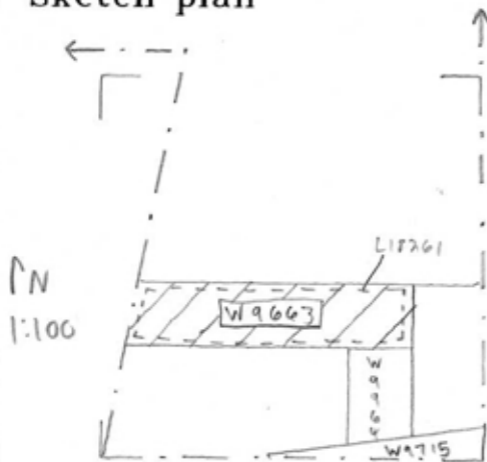
Relations: ON THE SOUTH FACE OF W9963, L18003 REACHES W9963. F18003 WHICH IS THE SAME OR A RESURFACING OF F18024 RUNS UNDER W9963 TO THE NORTH. THUS L18024 ALSO REACHES W9963 FROM THE SOUTH. L18071 CONTINUES UNDER W9963 FROM THE SOUTH, AS DOES F18077 WHICH WAS NOTICED IN THE BAULK AFTER EXCAVATING L18071. ON THE NORTH, W9963 IS REACHED BY L18016. F18016 CONTINUES SOUTH UNDER W9963 AND MAY RELATE TO F18003/F18024 AND/OR F18077. L18020 CONTINUES SOUTH UNDER W9963 AND PROBABLY INTO L18071. W9963 CONTINUES INTO THE WEST BAULK UNDER DRAIN L9025 AND ABUTS W9964 TO THE EAST. EXCAVATION OF L18002 SHOWED THAT W9963 DID NOT CONTINUE BEYOND W9964 INTO THE EAST. F18077 AND THE MUDBRICK PHASE OF W9963 ASSOCIATED WITH IT ARE THE FIRST PHASE OF CONSTRUCTION AFTER THE DESTRUCTION LEVEL. AFTER MUDBRICK W9963 COLLAPSED, STONE W9963 WAS BUILT ON THE MUDBRICK REMAINS. F18003/F18024 WAS THEN BUILT REACHING W9963 WHICH SLOPES DOWN NORTHWARDS TO ALMOST MEET F18077. IT IS ON F18003/F18024 (RELATING TO F18016 AND F18018) THAT W9963 AND W9964 WERE BUILT IN RELATION TO STONE W9963.

* The bricks visible E of W9964 thought in 93 to be an extension of W9963/ were not visible this year.
 Additional Observations/Value: VALUE FOR STRATIGRAPHIC ANALYSIS IS HIGH because of position above destruction deposit.

LOCUS

W 919631

Sketch plan



S

