

<b>Locus</b> W 9952	<b>Dor</b> 1993	<b>Fld</b> G <sub>1</sub>	<b>Sq</b> A <sub>1,3,1</sub>	<b>Loc. type</b> Alignment of field stones.
<b>Open</b> 27/07/93	<b>Date</b>	<b>High</b> at 13.47 E <sub>1</sub>	<b>Low</b> at 13.39 C <sub>1</sub>	<b>Seals:</b> _____
<b>Close</b> 04/08/93		13.36 W <sub>1</sub>	13.36 E <sub>1</sub>	<b>Sealed by:</b> _____
<b>Floor:</b> type _____		_____	_____	<b>Locl</b> L9911
<b>Length</b> 0.9	<b>Width</b> 0.4	<b>Vol</b> _____	<b>Drawn?</b> Y E S	<b>above</b> _____
<b>Value</b> 11	<b>Remove</b> _____			<b>below</b> _____
<b>Photo #(1)</b> See Ezra		<b>Photo #(2)</b> _____		<b>Locl</b> W9964
<b>Written by:</b> SGO		<b>Checked by:</b> JRSZ		<b>below</b> _____

<b>Unit</b> _____	<b>Phase</b> _____	<b>Stage</b> _____	<b>Stratum</b> _____	<b>PoM</b> _____
-------------------	--------------------	--------------------	----------------------	------------------

**Summary** \_\_\_\_\_

**Opened:** An alignment of fieldstones was noticed as the base of L9911 was reached.

**Limits (N)** Continuation of L9911  
**(S)** continuation of L9911  
**(E)** Edge of L9911 in line with Edge of W9964 below.  
**(W)** Continuation of L9911, in line with Wedge of W9964 below.

**Closed:** End of Season - Not closed.

**Matrix:** An alignment of seven fist sized field stones, perpendicular to the line of W9964. Only the top course visible at end of season - unclear if this alignment continues in additional courses.

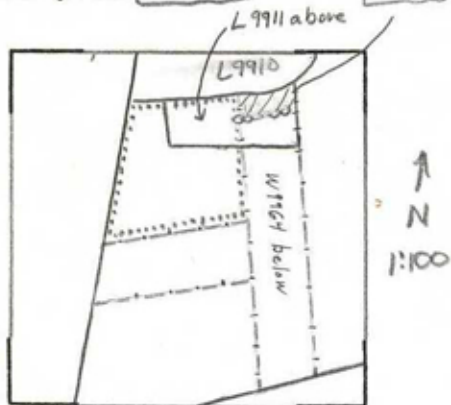
**Relations:** W9952 is covered, and completely within the limits of L9911. The relation between W9952 and W9964 is unclear. Some possibilities are: 1) W9952 bears no relation to W9964. 2) W9952 is of a single course, and marks the N most extent of W9964. 3) W9952 is of several courses, again marking the N most extent of W9964. 4) W9952 marks the boundary between the base of the superstructure of W9964 and an ancient living surface (F9965, or the base of L9984 and L9910 perhaps). In any case, W9964 did not clearly extend N to meet W9952 by the end of the '93 season. The continuation of the line of W9964, on which W9952 rests, was left pedestalled up to its intersection with L9910 at the end of the season.

**Additional Observations/Value:** Depending on what W9952 turns out to be, it may be of some value for stratigraphic analysis.

Sketch plan

W9952

W9952



 L9965 below, and L9984 below that.



102281



102278

Section



102277





117 110



117 111

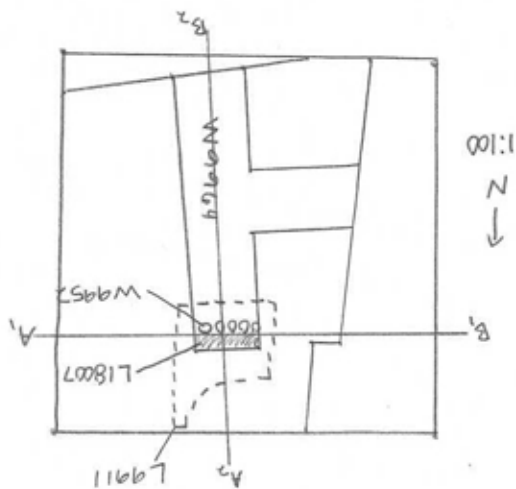


117 114

Locus

W9952

Sketch plan

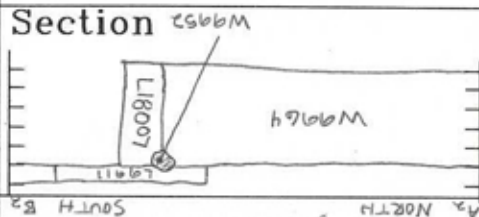


117 112

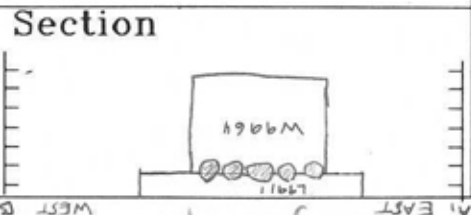


112 113

Section



Section



Facing East

Facing North