

Locus L 9948	Dor 19 93	Fld G1	Sq A633	Loc. type Fill to Floor
Open Date 27/07/93 Close 30/09/93 Floor: type CIP Length 1.0M Value 0	High at 14.23 N/E	Low at 14.67 S/E	Seals: 9948	Sealed by: N/A
Width 0.6M	Remove _/_/_	Vol _/_/_	Locl above 9948	
Drawn? YES	Photo #(1) 101844	Photo #(2) 101843	Locl below 9948	
Written by: GSLC	Checked by: JR2			

Unit	Phase	Stage	Stratum	PoM
------	-------	-------	---------	-----

Summary

Opened: To differentiate between the southern section of western L9932 which had a large patch of floor, and the northern section, with its own floor in the NE corner.

Limits (N) L9944

(S) Un-numbered pedestal below W9278.

(E) L9932 and un-numbered loci below

(W) West bank.

Closed: Came down on floor [F9948].

Matrix: Soft, lightly packed reddish brown soil w/ charcoal flecks, mud brick and a few small pottery sherds. Matrix is a continuation of L9864/L9889/L9932, as well as L9944 to the N. Also similar to the soil in the rest of A633 at this level. [F9948] is a thick ~4cm floor made of dark grey mud mixed with crushed kurkar that is peach colored. It has the consistency of clay.

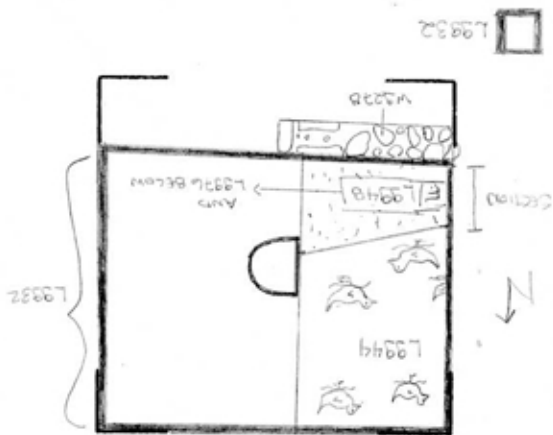
Relations: The western section of L9932 covers, but does not seal, [L9948].

- To the west, [F/L9948] continue into the W bank. It is clear from the bank section that [F9948] is a continuation of F9932(b) and F9889(c) and slopes upward from south up to north. (See isometric view in "Section" below).
- To the south, [F/L9948] continues into the un-numbered pedestal below W9278.
- To the east, [F/L9948] may continue below L9932, but probably is a part of the vast system of F9932 and its resurfacings.
- To the north, [F/L9948] reaches L9944. [F9948] connects w/ F9932(b) + F9889(c) to make 1 floor that slopes upward and above the level of L9944. Although the whole floor system covers, but does not seal, L9944; because of the way that floor was excavated in horizontal layers, [F/L9948] reaches L9944.

[L9948] includes some material from below its own floor. This sub-floor material is continuation of L9944 to the N. Originally F9948/9932/9889 probably covered much of the S end of L9944. Most likely [L9889] and [L9932] contain some material from below their floors due to the extreme downward slope (N-S) of F9889 + F9932 + 9948. No system of floors and resurfacings was traced in A133 to the W.

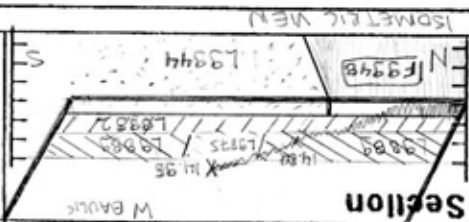
Additional Observations/Value: Moderate value. Sherds were from IR2. Material somewhat mixed; contains some earlier sub-floor material.

Scale = 1:100



Sketch plan L9948

AD33



Section

W Baulk



F9948

Section

101844



F9948