

<b>Locus</b> L 9942	<b>Dor 19</b> 9,3	<b>Fld</b> G	<b>Sq</b> A.V. 32	<b>Loc. type</b> Fill to Pavement?
<b>Open</b> 2,2/07/93	<b>Date</b>	<b>High</b> at 13.73 S	<b>Low</b> at 13.68 C	<b>Seals:</b> 9958
<b>Close</b> 28/07/93		13.55 C	13.42 C	<b>Sealed by:</b>
<b>Floor:</b> type				<b>Locl</b> 9906 9884
<b>Length</b> 2.0	<b>Width</b> 0.7	<b>Vol</b>	<b>Drawn?</b> YES	<b>above</b>
<b>Value</b> M	<b>Remove</b>			<b>below</b>
<b>Photo #(1)</b> 101712	<b>Photo #(2)</b> 101713			
<b>Written by:</b> ARM	<b>Checked by:</b> JRZ			

<b>Unit</b>	<b>Phase</b>	<b>Stage</b>	<b>Stratum</b>	<b>PoM</b>
-------------	--------------	--------------	----------------	------------

**Summary**

**Opened:** Came down on flat rocks; pavement?

**Limits (N)** L 9931 and L 9987 and L 9984

**(S)** L 9891

**(E)** western limit of square A732

**(W)** L 9867

**Closed:** Went below pavement

**Matrix:** Big flat rocks, L 9906 and L 9884 red-brown and dark brown sandy material L 9958 brown sandy material with small stones and smashed pebbles

**Relations:** L 9884 and L 9906 cover but do not seal L 9942, L 9962

seals L 9958

To the S L 9962 is cut by the pit L 9891 x

To the W L 9867 reaches L 9962

To the N L 9884 and L 9987 may reach L 9962 (L 9884 also covered L 9962)

To the E (square A732) there doesn't seem to be a continuation of the pavement. The locus around this level L 9380 consists of layers of brown sandy soil, Ashy soil and charcoal and fragmentary plaster floors (el. 13.80-13.83)

L 9931 on the N may also reach L 9942. In defining L 9942's stones on the N, L 9984 was dug down a bit beside the stones; so L 9984 covers and reaches part of L 9942.

L 9942 may be a pavement similar to L 9300 in AI/AJ 32.

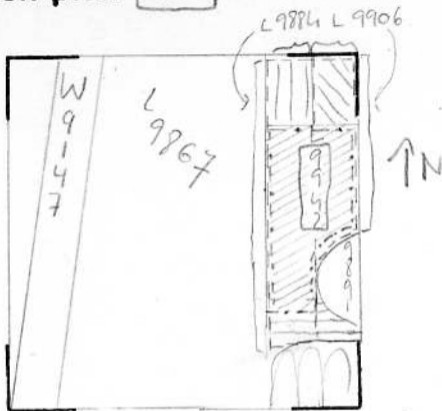
x In SW we made a tz to the pit L 9891 until we opened L 9977 to define L 9993 under it, but that's already on the level of L 9958 (see card L 9958)

L 9942 is probably reached by the deposit between the pit L 9891 and the bank

**Additional photos:** 101714 - 101717

**Additional Observations/Value:** Fragment of possibly bigger pavement

# Sketch plan 9942



≡ = twilight zone +  
L 9977 below

\\ = L 9987

|| = 9931