

Locus W 9914	Dor 19 93	Fld G	Sq A333	Loc. type Reed Mat Mudbrick Wall
Open 15/27/93	High at 13.82 S	Low at 13.60 S	Seals: _____	
Close 24/28/93	High at 13.82 S	Low at 13.54 S	Sealed by: 9869	
Floor: type _____	Width _____	Vol _____	Locl 9902	
Length 3.8	Remove _____	Drawn? YES	above _____	
Value I			Locl 18790	
Photo # (1) 101218	Photo # (2) 101219		below _____	
Written by: JRS	Checked by: JRZ			

Unit _____	Phase 7/63?	Stage _____	Stratum _____	PoM _____
-------------------	--------------------	--------------------	----------------------	------------------

Summary _____

Opened: When L9902 above came down on F9902 to the East, the reedmat material of W9914 in the center of L9902, and the continuation of F9859 to the West.

Limits (N) Bounded by W9211 to the North

(S) Bounded by W9066 to the South

(E) Bounded by L9922 and L9923 to the East.

(W) Bounded by L9939 and L9940 to the West

Closed: Not closed, end of season.

Matrix: Reed matting laid over a stone socle of a single course of small field stones 10-20cm in diameter. Reeds visible only as a stain in the soil. Reeds are on average 1cm in width. No bricks were preserved as observed during excavation, but brown mudbricks were observed in section below W9066 that weren't preserved in L9902.

Relations: W9914 is cut and covered by L9902. F9902 reaches W9914 - F9859 could not be traced to an observable point where it reached W9914, but probably did reach W9914 given that W9066 lays directly upon F9902 and F9902 reaches W9914. Since W9066 also lays directly upon F9859, F9859 should also reach W9914, but this relationship has been disturbed. The relationship of W9914 to L9940 is unclear since L9940 was not excavated this year. Further excavation is required in order to discern the relations between these two loci. W9066 cuts W9914, as does W9211, but it is also possible that W9914 reaches/abuts W9211. W9914 cuts both L9922 and L9923 to the East.

Note: This is the 2nd wall found employing reed matting as a bedding material. The other is W9275 in A333. There too fragments of reeds were found directly on top of the stone socle/foundation.

Additional Photo #'s: 101220-101224, 101309-101311, 101312-101314

Additional Observations/Value: Reed mat mudbrick floor reached by sealed and unsealed IRON Age floors. High value.

Locus W 9914	Dor 19 ₉₄	Fld G	Sq A5331	Loc. type Wall (card)
Open	Date 05/07/94	High at 13.82	Low at 13.610	Seals: _____
Close	05/08/94	13.53	13.46	Sealed by: _____
Floor: type				Loci _____
Length 2.9	Width 0.5		Vol _____	above _____
Value 1	Remove 1/1/1		Drawn? Yes	below _____
Photo #(1) 117601	Photo #(2) 117602			
Written by: J.R.Z.	Checked by: J.R.Z.			

Unit _____ Phase 7/66?? Stage _____ Stratum _____ PoM _____

Summary _____

Opened: See previous card

Limits (N) See previous card

(S) See previous card

(E) See previous card

(W) _____

Closed: W9914 now floating, was not removed this season; not closed

Matrix: See previous card. W9914 is only preserved one course high.

Relations: For relations above, N, S, and E see previous card. Only new relations in '94 are to West.

On the West L18015 reaches W9914 while F18015 continues below W9914 to the east, though no matching floors were found E of W9914. L18063 continues into the debris below W9914. F18063 also continues below W9914, though no comparable floor was noticed E of W9914.

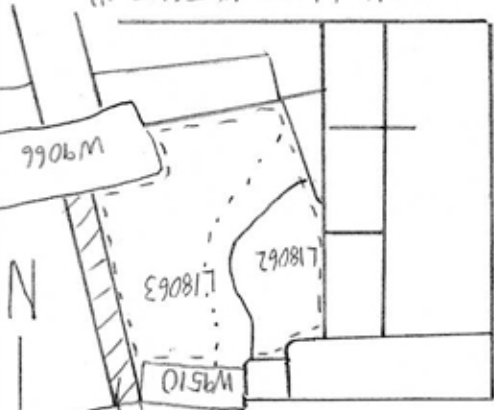
Additional Photos: 117603, 117599

Additional Observations/Value: Important for the phasing of the area in which the Cypriote vessel was found, probably a phase 7 wall

Locus
M 9914

Sketch plan

... = line between 18015 (to east)
and 18029 (to west) above
18062 and 18063



--- = F18063
Area of 18063 = F18015 (above)

Photo

Photo

Section

Section