

Locus W 9904	Dor 19 93	Fld 6	Sq A334	Loc. type Wall
Open 1.6.27.93	High at 14.11 N	Low at 13.38 G	Seals: _____	
Close 8/28/93	13.04 N	12.98 G	Sealed by: _____	
Floor: type _____	_____	_____	Locl 91.96 _____	
Length 1.8	Width 0.6	Vol _____	above _____	
Value 1	Remove 1/1/1	Drawn? YES	below _____	
Photo # (1) _____	Photo # (2) _____		Locl _____	
Written by: JKS	Checked by: JRZ		below _____	

Unit _____	Phase _____	Stage _____	Stratum _____	PoM _____
-------------------	--------------------	--------------------	----------------------	------------------

Summary _____

Opened: When pit L9186 bottomed out and came down on W9904. Discovered on last day of excavation in '89 season but not numbered and excavated until '93 season.

Limits (N) Bounded on the North by the unnumbered material below W9085.

(S) Bounded on the South by W9211.

(E) Bounded on the East by L9905.

(W) Bounded on the West by L9903.

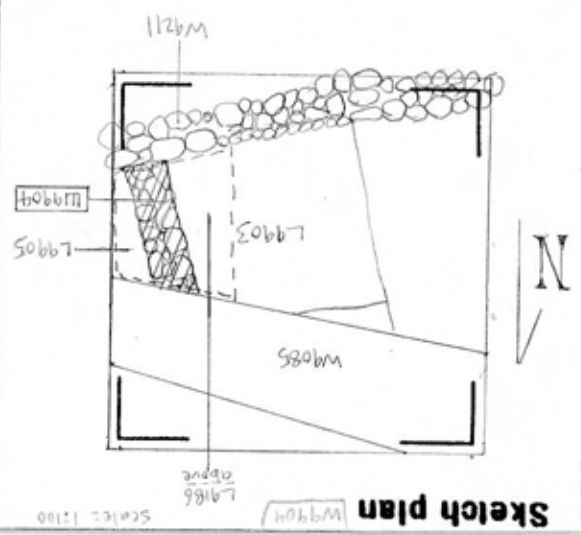
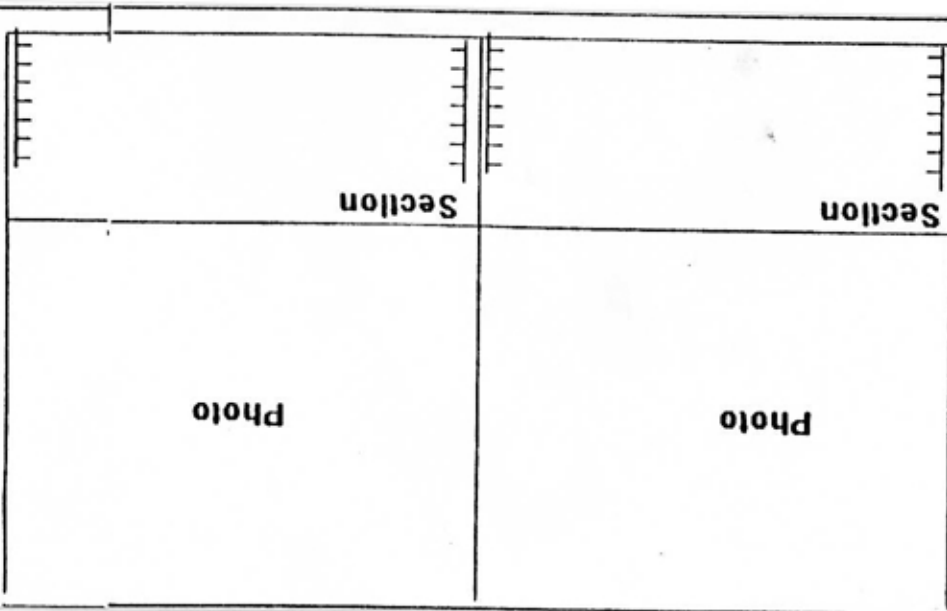
Closed: Not closed, end of season.

Matrix: Kurkar fieldstone wall (45x25cm largest) packed with smaller (10cm diameter) Kurkar fieldstones. Presently three courses high; two courses are exposed, the uppermost is observed in the bank below W9085.

Relations: L9196 cuts and covers W9904. L9903 and L9905 reach W9904 from the West and the East respectively, although the relationship between W9904 and L9905 is less than certain since L9905 was not excavated this season. W9904 continues into the unexcavated material below W9085. W9904 abuts W9211 on the S and continues N under W9085.

*Notes: opening low + closing high taken from adjacent loci and may differ from architect's levels

Additional Observations/Value: Iron Age wall cut by Persian Pit from above. May extend downward to Phase 9. High Value.



Locus W 9904	Dor 1994	Fld G	Sq A J 3 4	Loc. type Wall (card 2)	
Open Date 0.5/07/94	High at 1.4-1.1	at N ₁	Low at 1.3-3.8	at C ₁	Seals: _____
Close Date 0.5/07/94	1.3-1.5	N ₁	1.2-8.3	S ₁	Sealed by: _____
Floor: type 1	1.3-0.2	S ₁	1.5-0.2	S ₁	Loci _____
Length L ₁ 9	Width 0.7	Vol _____	Drawn? Yes	above _____	below _____
Value 1	Remove / /	Photo #(1) See Isra	Photo #(2) _____	Loci 1, 2, 3, 4	below _____
Written by: JRZ	Checked by: JRZ				

Unit _____ Phase _____ Stage _____ Stratum _____ PoM _____

Summary _____

Opened: See previous card

Limits (N) See previous card

(S) See previous card

(E) 18065, 18089

(W) See previous card

Closed: Not yet floating, not removed at end of season; not closed

Matrix: See previous card. In '94 4 courses of field stones were visible on the West face.

Relations: For relations above, N, S and E see previous card. Only new relations in 194 are to the West.

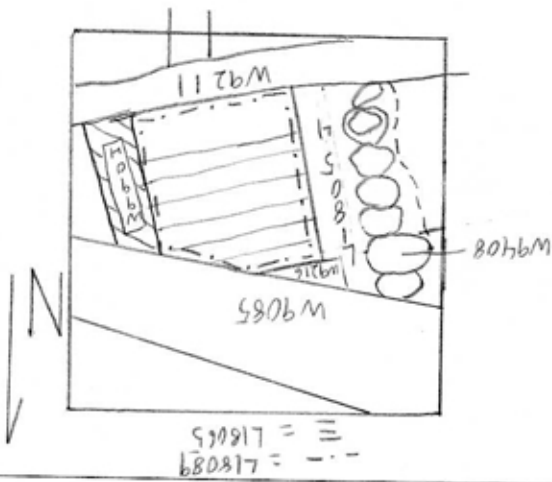
On the West 18065 (mudbrick surface) seems to reach W9904. 18089 also seems to reach W9904. Since 18089 was stopped before reaching a floor level observed in a section between 18065 and 18054 the relation of this floor to W9904 is as yet undetermined.

Additional Observations/Value: small wall with few connections to other walls or floors in 194.

Locus

W 99,94

Sketch plan



Photo

Photo

Section

Section