

Locus L 9882	Dor 19 93	Fld G	Sq A131	Loc. type Phantom Feature (Bin?) (Cord?)						
Open	Date 14/07/93	High 14.56	at S	Low 14.34	at C	Seals: _____	_____	_____	_____	See 97
Close	14/07/93	14.51	S	14.21	C	Sealed by: _____	_____	_____	_____	
Floor: type	_____	Width	_____	Vol	_____	Locl	_____	_____	_____	_____
Length	_____	Remove	_____	Drawn?	NO	above	_____	_____	_____	_____
Value	_____	Photo #(1)	_____	Photo #(2)	_____	Locl	_____	_____	_____	_____
Written by:	SGO	Checked by:	IRZ	below	_____	_____	_____	_____	_____	_____

Unit	Phase	Stage	Stratum	PoM
------	-------	-------	---------	-----

Summary

Opened: Phantom feature noticed in bulk cleaning.

Limits (N) \_\_\_\_\_  
 (S) \_\_\_\_\_  
 (E) \_\_\_\_\_  
 (W) L9882 only visible in section of pedestal underneath L9025, the Roman drain feature.

Closed: \_\_\_\_\_

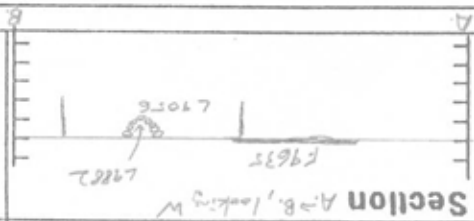
Matrix: parabolic arrangement of fist-size field stones, open end up, 1 to 2 stones thick, possibly a drain feature, or a bin, or a sump. Dimensions of feature can not be determined from section in bulk.

Relations: The top of this feature is at the same level as F9635 (elev. F9635 = 14.61, elev. L9882 = 14.56); however, the remnants of F9635 visible in the pedestal under the Roman drain, L9025, do not reach the southern extent of L9882 (the visible section of F9635 is to the S of L9882). It appears from the 1991 season locus cards that L9882 probably was located within L9056, but was not noticed at the time of excavation; possibly it has only been noticed now due to erosion of pedestal below L9025. Another possibility is that L9882 was cut through F9635, but we'd have to remove the drain to really understand this feature. Isn't speculation grand! Note: Not too much faith should be placed in any relation to L9056; the excavator did not do a good job that year!

Additional Observations/Value: This locus may be of the same phase as F9635.



Section



Photo



N ↓

1:100

9882

Sketch plan

<b>Locus</b> L 9882	<b>Dor</b> 1997	<b>Fld</b> G	<b>Sq</b> A131	<b>Loc. type</b> Bin (Card II) See '93		
<b>Open</b> 97/99/97	<b>Date</b>	<b>High</b> at 14.67	<b>at</b> W	<b>Low</b> at 14.62	<b>at</b> S	<b>Seals:</b> _____
<b>Close</b> 97/0/97		<b>High</b> at 12.45	<b>at</b> C	<b>Low</b> at 12.65	<b>at</b> C	<b>Sealed by:</b> _____
<b>Floor:</b> type _____		<b>Length</b> 0.5	<b>Width</b> 0.3	<b>Vol</b> _____		<b>Loci</b> L18200 _____
<b>Value</b> 1d	<b>Remove</b> 4/1/97/97	<b>Drawn?</b> Yes				<b>above</b> _____
<b>Photo #</b> (1) 16267-269	<b>Photo #</b> (2) 18268					<b>Loci</b> _____
<b>Written by:</b> JCM	<b>Checked by:</b> JRZ					<b>below</b> _____

<b>Unit</b> _____	<b>Phase</b> _____	<b>Stage</b> _____	<b>Stratum</b> _____	<b>PoM</b> _____
-------------------	--------------------	--------------------	----------------------	------------------

**Summary** \_\_\_\_\_

**Opened:** Feature noticed in balk in 1993. We decided to excavate this portion of the balk this year.

**Limits (N)** L18207  
**(S)** See 93 card  
**(E)** See 93 card  
**(W)** See 93 card

**Closed:** Bottomed out on the bin. Came down to stone base. Removed bin

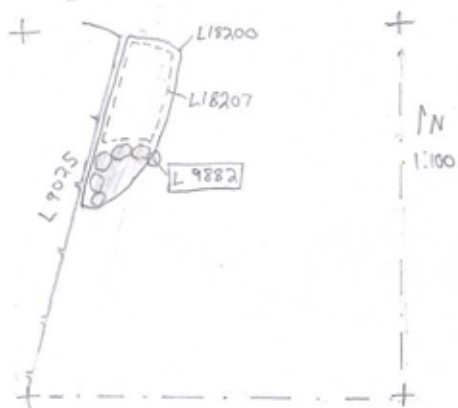
**Matrix:** First sized stones from 5-7 courses high lined the pit. The soil contained within is light gray ashy soil similar to that above in L18200. Many shells were in the matrix and some pottery

**Relations:** L18200 covers and continues down into L9882. L18200 reaches the upper stones of [L9882] [L9882] cuts L18207 to the north. See 93 card for relations for the ravin east with L9056. [L9882] extends into the balk to the west below drain L9025

Also Photo #18269  
**Additional Observations/Value:** low value. Disturbed

**LOCUS**  
L 9882

Sketch plan



Photo



Photo

Section



Section

