

Do under AH34 w. Cheryl

(centered)

Locus L 9838	Dor 1992	Fld G	Sq AI34/AH34	Loc. type MUDBRICK COLLAPSE/FILL
Open 10/08/92	High at 14.50 SW	Low at 14.41 NE	Seals: _____	
Close 11/08/92	High at 14.22 SW	Low at 14.21 NE	Sealed by: _____	
Floor: type _____	Width 1.6	Vol _____	Locl 9811 9831 _____	
Length 2.4	Remove _____	Drawn? NO	above _____	
Value H	Photo #(1) _____	Photo #(2) _____	Locl _____	
Written by: SFB	Checked by: JRZ	below _____		

Unit _____	Phase _____	Stage _____	Stratum _____	PoM _____
-------------------	--------------------	--------------------	----------------------	------------------

Summary

Opened: WHEN FORMER BULK L9831 WAS EXCAVATED TO LEVEL OF L9811 TO ITS NORTH, THE TWO WERE COLLAPSED INTO L9838

Limits (N) W9825 + Press Weight?

(S) L9759

(E) W9266

(W) W9684

Closed: END OF SEASON, NOT CLOSED

Matrix: MEDIUM TO DARK BROWN MUDBRICK DEBRIS, MANY ENCLUSIONS OF MUDBRICK FRAGMENTS, ORANGE & WHITE FLECKS, PARTLY BAKED BRICKS, CONSIDERABLE NUMBER OF POTSHERDS, SIMILAR TO L9811 & L9831 ABOVE, ALSO SIMILAR TO L9759 TO SOUTH

Relations: L9838 CONTINUES MATRIX OF L9811 & L9831 ABOVE. BELOW, ITS MATRIX CONTINUES INTO UNEXCAVATED MATERIAL.

NORTH: L9838 REACHES W9825

WEST: L9838 REACHES W9684 & CONTINUES INTO UNEXCAVATED MATERIAL NORTH

SOUTH: MATRIX OF L9838 CONTINUES INTO L9759

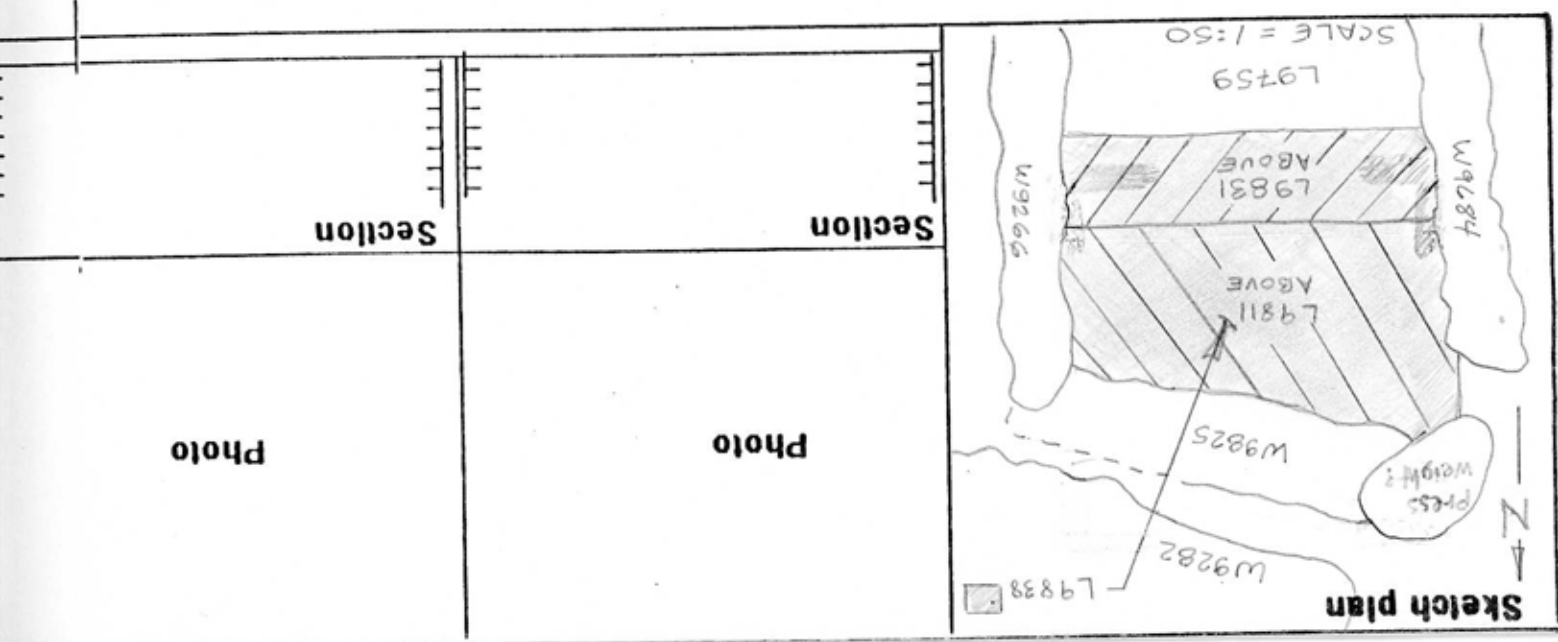
EAST: L9838 REACHES W9266

⊗ OF W9684: MATRIX OF THIS MATERIAL IN ROBBED OUT NORTH PORTION OF W9684 MUST BE DIFFERENT, BUT DIFFERENCE WAS NOT NOTICABLE.

NOTE: THIS LOCUS CONTINUES SOUTHWARD INTO AI33/AH33

Additional Observations/Value: CONTENTS OF THIS LOCUS PROBABLY REPRESENTS EARLY USE OF SURROUNDING WALLS

1 sa ma bn u



Sketch plan

N

press weight?

SCALE = 1:50

L9759

L9831

ABOVE

L9811

ABOVE

W9266

W9285

W9282

L9838

W9684

Section

Photo

Section

Photo