

(entered)

Locus L9831	Dor 1992	Fld G	Sq A1/AH33	Loc. type Mudbrick debris
Open 08/07/92	High 14.83	at E	Low 14.82	at W
Close 08/07/92	High 14.48	at W	Low 14.48	at E
Floor: type <u> </u>	Width <u> </u>	Vol	Seals: <u> </u> <u> </u> <u> </u> <u> </u>	
Length 2.5	Remove 08/07/92	Drawn? N/A	Sealed by: <u> </u> <u> </u> <u> </u> <u> </u>	
Value <u> </u>	Photo #(1) <u> </u> Photo #(2) <u> </u>		Locl 9839 <u> </u> <u> </u> <u> </u> <u> </u>	
Written by: ESS	Checked by: JRZ		above <u> </u> <u> </u> <u> </u> <u> </u>	
			Locl <u> </u> <u> </u> <u> </u> <u> </u>	
			below 9838 <u> </u> <u> </u> <u> </u> <u> </u>	

Unit <u> </u>	Phase <u> </u>	Stage <u> </u>	Stratum <u> </u>	PoM <u> </u>
-----------------------	------------------------	------------------------	--------------------------	----------------------

Summary

Opened: Opened below L9830 when matrix changed from loose, med. brown ash soil (possibly eroded mudbrick debris) to compact mudbrick debris.

Limits (N) L9811
(S) L9722 and L9734
(E) W9266
(W) W9684

Closed: When brought to base level of L9811 in A1/AH34. - THESE COLLAPSED INTO L9838

Matrix: Medium brown to dark brown mudbrick debris. Very compact. Large quantities of pottery. Similar L9722 and L9734 to the S. ALSO SIMILAR TO SOUTHERN PART OF L9811 TO NORTH AND TO L9838 BELOW

Relations: L9830 covers but does not seal L9831. L9831 reaches the W. face of W9266 and the E. face of W9684. To the S. L9831 continues into L9722 and L9734, though no trace of any floor was found TO NORTH, MATRIX OF L9831 CONTINUES INTO L9811. BELOW, MATRIX OF L9831 CONTINUES INTO L9838

Additional Observations/Value: Mudbrick debris locus - low value.

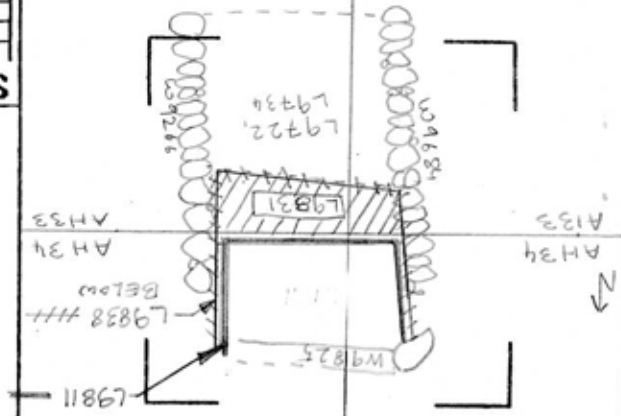
Photo

Section

Photo

Section

Sketch plan 1:100



- 9831

LC

St Ob Ma R C P1 P2 P3

sh cr 3 u ir1 ir2a
e (?) vessel from L9753. (R) Check with

ma bn u

ma cr u
ached. Send for analysis.

tw st u

sh cr 3 u ir1 ir2a
with L9722 and L9734.