

(entered)

Locus W 9825	Dor 19 9,2	Fld G	Sq AI34/AH34	Loc. type WALL
Open 0.5/28/92	High 14.64	at S	Low 14.48	at N
Close 11/28/92	High 14.21	at SE	Low 14.21	at SW
Floor: type	Width	Vol	Drawn?	
Value	Remove			
Photo # (1) 87139 95704	Photo # (2) 87136 95704			
Written by: SFB	Checked by: JAZ			

Unil	Phase	Stage	Siratum	PoM
-------------	--------------	--------------	----------------	------------

Summary

Opened: L9811 CAME DOWN ON A NUMBER OF LARGE FIELD STONES ALIGNED TO ALLOW HYPOTHETICAL WALL W9825

Limits (N) L9843 (NOT EXCAVATED; PHANTOM LOCUS)

(S) L9838

(E) W9266

(W) UNEXCAVATED MATERIAL BENEATH BOULDER WITH HOLE (PRESS WEIGHT)

Closed: NOT CLOSED - ONLY TOP COURSE EXPOSED THIS SEASON

Matrix: TOP COURSE ONLY IS EXPOSED. MADE UP OF FIELD STONES VARYING FROM APPROXIMATELY 50 CM ACROSS TO 25 CM ACROSS. NO MORTAR IS EVIDENT IN TOP COURSE EXPOSED. A LARGE BOULDER WITH A HOLE IN IT (RE-USED PRESS WEIGHT?) IS PEDESTALED ABOVE THE WEST END OF W9825. WE WERE ⊗

Relations: ABOVE: L9811 OVERLIES W9825, but does not seal it.

BELOW: UNEXCAVATED

NORTH: PHANTOM LOCUS L9843 (UNEXCAVATED)

WEST: UNEXCAVATED; also below boulder/weight

SOUTH: L9838 REACHES W9825

EAST: W9825 MEETS W9266. WHETHER THESE WALLS ABUT OR DOVETAIL IS NOT DETERMINABLE AT THIS POINT OF EXCAVATION

W9825 SEEMS TO CLOSE A ROOM MADE UP W9266, W9729 & W9684. THERE IS A GAP BETWEEN THE NORTH END OF W9684 AND THE LARGE BOULDER AT WEST END OF W9825 BUT IT IS TOO NARROW TO BE A DOORWAY. PERHAPS W9684 WILL EXTEND FURTHER NORTH AT A LOWER LEVEL.

★ NOTE: W9825 WAS FOUND TO BE A CONTINUATION OF W9211 IN 1993 SEASON - PLEASE SEE CARD 55K.

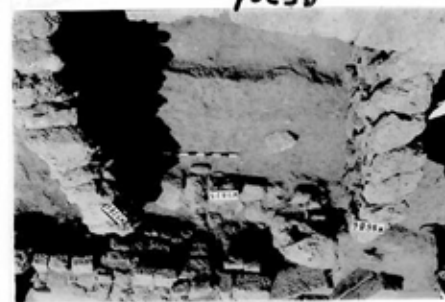
Note: length + width of wall could not be determined by end of season

★ UNABLE TO REMOVE ENOUGH EARTH TO DETERMINE ITS RELATION WITH STONES BENEATH IT. IT MAY BE PART OF ROBBED OUT UPPER PART OF W9825

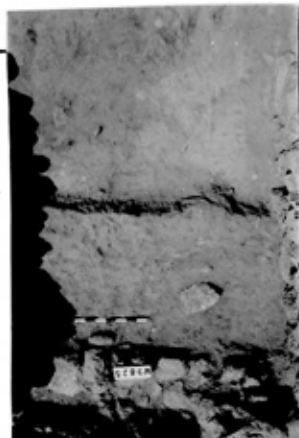
Additional Observations/Value: FURTHER EXCAVATION AROUND AND BENEATH LARGE BOULDER AT TIME OF ITS REMOVAL CAN DETERMINE IF IT WAS PART OF ORIGINAL W9825.



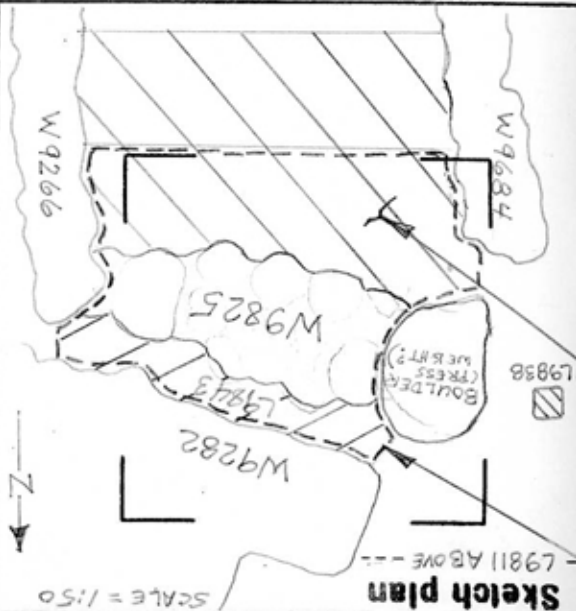
456956



10656



55704



L 9825

St Lc

Df St Ob Ma R C P1 P2 P3

wm ot br s

cl sh cr 0 u ir
rth face

cl ma bn u

cl sh cr 0 u ir
with W9684

cl ma bn u
th W9684

sa ma bn u