

(cont'd)

Locus L 9778	Dor 1992	Fld G	Sq AI34	Loc. type PIT
Open Date 2,1,07,9,2	High at 14.80	Low at 14.80	Seals: _____	
Close Date 2,2,07,9,2	14.65	14.65	Sealed by: _____	
Floor: type _____	Width _____	Vol _____	Locl 9754	
Length L. 2	Remove 2,2,07,1	Drawn? NO	above _____	
Photo #(1) _____	Photo #(2) _____	Locl 9780 - JRZ 207	below _____	
Written by: SF, B	Checked by: JRZ			

Unit	Phase	Stage	Stratum	PoM
------	-------	-------	---------	-----

Summary

Opened: L9778 WAS OPENED WHEN L9754 CAME DOWN ON GRAY, SHERDY, PIT MATERIAL ON THE WEST EDGE OF ITS SOUTHERN PORTION

Limits (N) L9780
 (S) L9780
 (E) L9780
 (W) PREVIOUSLY EXCAVATED PIT L9680

Closed: L9778 WAS CLOSED WHEN ALL ASHY GRAY "PIT MATERIAL" WAS REMOVED

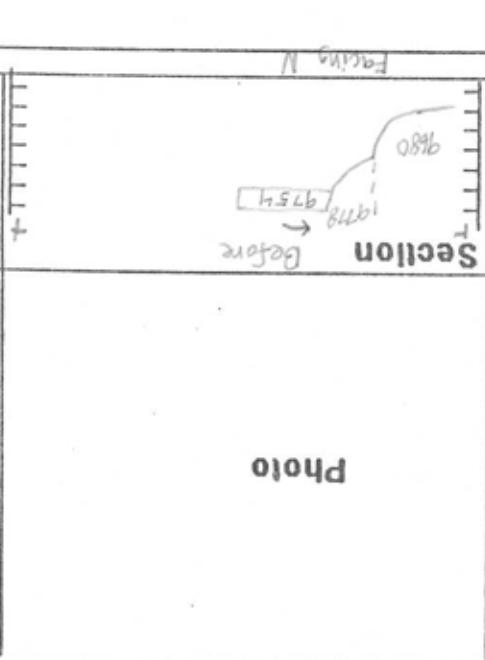
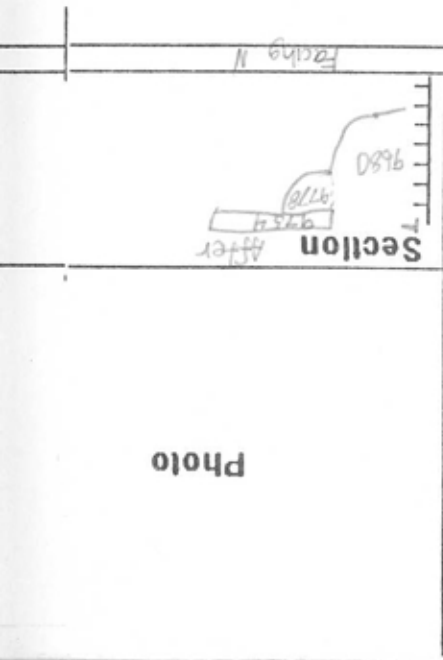
Matrix: L9778, CONSISTS OF ASHY, GRAY SOIL WITH HIGH CONCENTRATION OF SHERDS. DISTINCT FROM FIRM, BROWN SOIL OF L9780 FILL INTO WHICH IT CUTS.

Relations: ABOVE: L9778 IS COVERED BY FILL MATERIAL L9754
 BELOW, NORTH, EAST, AND SOUTH: L9778 CUTS INTO L9780 WITH STEEPLY SLOPING SIDES. WEST: L9778 PROBABLY CONTINUES MATRIX OF PREVIOUSLY DUG PIT L9680 WHICH IS PART OF LARGER PIT COMPLEX L9251.

THE PORTION OF L9754 BROWN FILL MATERIAL WHICH WAS OVER L9778 IS OF THE MATRIX INTO WHICH THE PIT WAS DUG WHICH EITHER COLLAPSED, SEEPED, OR WAS DEPOSITED OVER A PORTION OF THE PIT MATERIAL

Sections show pit 9778 dug into Iron Age fill. Sometime later Iron Age fill from the edge of the pit was redeposited over 9778, thus sandwiching a Persian pit between layers of Iron Age material.

Additional Observations/Value: OF LITTLE VALUE; "PERSIAN PIT". PART OF PIT COMPLEX L9251 + L9186.



L 9778

LC

St Ob Ma R C P1 P2 P3

sh cr 1 u pr ir

ma bn u

Photo

Photo

Sketch plan