

<b>Locus</b> L 9768	<b>Dor</b> 19 9.2	<b>Fld</b> G	<b>Sq</b> A, L34	<b>Loc. type</b> FLOOR DEPOSIT
<b>Open</b> 1.7.97.92	<b>Date</b> 1.7.97.92	<b>High</b> at 15.25	<b>Low</b> at 15.25	<b>Seals:</b> 9793
<b>Close</b> 2.10.79.2		15.22 W	15.18 E	<b>Sealed by:</b>
<b>Floor:</b> type C/P		15.22 W	15.18 E	<b>Locl</b> 9767
<b>Length</b> 0.3	<b>Width</b> 0.2	<b>Vol</b>		<b>above</b>
<b>Value</b> S	<b>Remove</b> 2.4.10.79.2	<b>Drawn?</b> YES		<b>below</b>
<b>Photo # (1)</b> 86383	<b>Photo # (2)</b> 86389			
<b>Written by:</b> S.F.B	<b>Checked by:</b> JRZ			

<b>Unll</b>	<b>Phase</b>	<b>Stage</b>	<b>Stratum</b>	<b>PoM</b>
-------------	--------------	--------------	----------------	------------

**Summary**

**Opened:** L9768 WAS OPENED WHEN LARGE FLAT STONE BENEATH EAST PART OF L9767 WAS REMOVED AND A SMALL PARTIAL FLOOR DEPOSIT <sup>WAS</sup> REVEALED

**Limits (N)** L9751  
 (S) L9696 (EXCAVATED IN 1991)  
 (E) L9695 (EXCAVATED IN 1991)  
 (W) L9786

**Closed:** L9768 WAS CLOSED WHEN THIN (~4CM) LAYER OF ASHY DEPOSIT WAS REMOVED DOWN TO FLOOR SURFACE

**Matrix:** L9768 CONSISTED OF GRAY ASHY MATRIX WITH A FEW SHERDS EMBEDDED INTO THIN WHITE LIME FLOOR MAKE-UP, COMPLETELY DISTINCT FROM ALL SURROUNDING FILL MATRICES.

**Relations:** FLOOR DEPOSIT L9768 WAS SEALED ABOVE BY A LARGE FLAT STONE AT THE BOTTOM OF EAST END OF PIT L9767. <sup>Floor of</sup> L9768 OVERLIES AND SEALS FILL DOWN TO FLOOR L9793 BELOW. TO THE NORTH IT APPEARS TO HAVE BEEN CUT BY PIT/FILL L9751. TO THE WEST IT IS CUT BY SLOPING SIDE OF PERSIAN PIT L9786\*. TO THE SOUTH IT IS CUT BY L9696 (IDENTIFIED ORIGINALLY AS A ROBBER TRENCH? BUT MORE LIKELY A CONTINUATION OF THE MATRIX OF PERSIAN PIT L9768). TO THE EAST IT WAS CUT BY EITHER: (a) CONTINUATION OF MATRIX OF L9751 TO ITS S.E.; (b) ROBBING ACTION OF L9695; (c) EXCAVATION OF L9695 IN 1991.

\*Note: pit L9767 continues down and to the E as L9786.  
 FLOOR L9768 IS AT IDENTICAL ELEVATION TO PARTIAL FLOOR L9790, WHICH IS 5M. S.E. OF L9768. L9768 IS THE HIGHEST SURVIVING OF A SERIES OF LATE IRON AGE FLOORS IN THIS AREA. (SEE L9793, L9754, L9810.) WALLS W926 & W9684 SURVIVE TO A HEIGHT WHICH INDICATES CONTEMPORARY USE WITH THESE FLOORS  
 FLAT STONE WHICH SEALED THIS FLOOR CAN BE SEEN BELOW W9761 IN PHOTOS 86382, 86383, 86384

**Additional Observations/Value:** FLOOR L9768 APPEARS TO BE A RESURFACING ASSOCIATED WITH FLOORS L9793, L9810 & L9754 BELOW. ITS VALUE IS DEPENDENT ON RELATIONS YET TO BE ESTABLISHED FOR THOSE LOCI



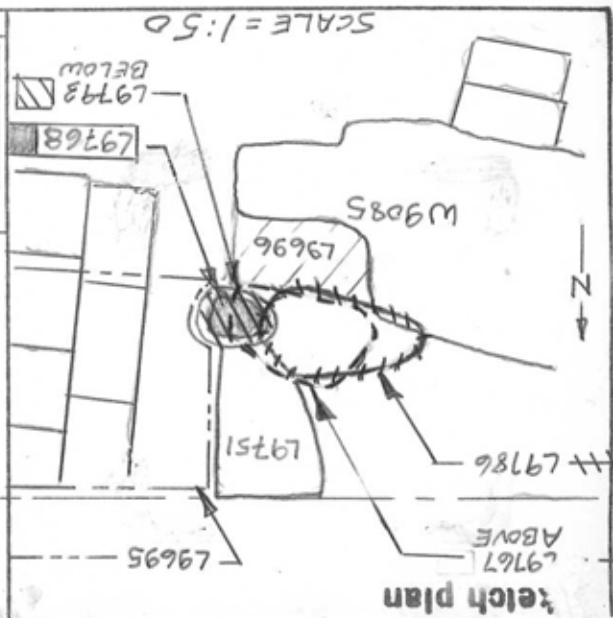
86382

Section



86383

Section



9768

L 9768

P. St Lc

Df St Ob Ma R C P1 P2 P3

8 fd

sh cr 2 p ir  
ragmentary floor; no complete vessels!