

(continued)

Locus LJ 9750	Dor 19 92	Fld 1G	Sq A134	Loc. type CLEANING
Open 13/07/92	Date	High 15.78 W	at Low 15.67 E	Seals: _____
Close 13/07/92		High 15.68 W	at Low 15.58 E	Sealed by: _____
Floor: type 1	Width 0.8	Vol	Drawn? NO	Locl 9205
Length 2.5	Remove	13/07/92		above _____
Photo #(1)	Photo #(2)			Locl 9751 9752
Written by: SFB	Checked by: JRZ			below _____

Unit	Phase	Stage	Stratum	PoM
------	-------	-------	---------	-----

Summary

Opened: OPENED (L9750) TO CONTINUE EXCAVATION BETWEEN (W9085) & N. BAULK OF SQUARE AT BEGINNING OF 1992 SEASON

Limits (N) N. BAULK OF SQUARE
(S) W9085 & L9767 (BENEATH ASHLARS W9761)
(E) L9616
(W) (W9774) & UNEXCAVATED MATERIAL TO ITS NORTH

Closed: CLOSED (L9750) WHEN IT BECAME APPARENT THAT A ^{FILL} MATERIAL L9751 NORTH OF ASHLARS W9761 WAS DISTINCT FROM BROWN CLEANER SOIL L9752 TO WEST

Matrix: (L9750) CONSISTS OF GRAY-BROWN SOIL WITH NUMEROUS SHERDS DIFFERENT FROM BROWN SOFT CLEANER MATERIAL OF (L9752) BELOW ITS WESTERN PART AND SIMILAR TO MATERIAL OF (L9751) BELOW ITS EASTERN PART.

Relations: (L9750) IS PROBABLY A CONTINUATION DOWN OF (L9205) (1987). THIS MATERIAL MAY CONTINUE DOWN AT E. 1/4 OF (L9750) INTO (L9751). THE W. 3/4 OF (L9750) IS ABOVE SOFTER MATERIAL OF (L9752). IT SEEMS TO CONTINUE INTO THE N. BAULK OF SQUARE. TO THE EAST IT IS BOUNDED BY (L9616) EXCAVATED IN 1991 BUT SEEMS TO BE A DIFFERENT MATRIX. TO THE SOUTH IT IS CUT BY (L9767), THE SOFTER, SHERD FILLED MATERIAL BENEATH ASHLARS (W9761). IT IS ALSO CUT, IN THE WESTERN PORTION BY (W9085). TO THE WEST IT IS CUT BY (W9774).

(L9750) HAS BEEN ON THE SURFACE SINCE (L9205) WAS EXCAVATED IN 1987. THEREFOR ITS HARDER, SHERDIER MATRIX WHICH DISTINGUISHES IT FROM (L9752) BELOW COULD BE AN EFFECT OF WEATHERING. THE TEXTURE DIFFERENCE WHICH DISTINGUISHES (L9751) FROM (L9752) MAY HAVE BEEN MADE INDISCERNABLE, AND (L9750) MAY BE AN UPWARD EXTENSION OF THESE TWO LOCL.

JRZ 91: Relation to (L9616) is uncertain, but if (L9616) is a rubber trench of drain (L9698), (L9616) may cut (L9750)

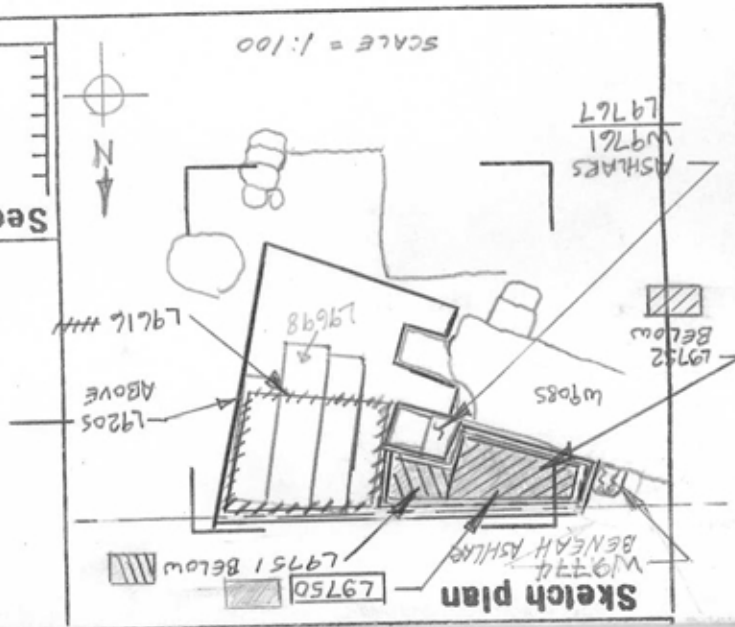
Additional Observations/Value: EXPOSURE OF THIS LOCL TO WEATHERING MAKES ITS VALUE DOUBTFUL

Photo

Section

Photo

Section



L 9750

eg. Clo. St Lc
le. Ele. Df St Ob Ma R C P1 P2 P3

78 15.68 cl sh cr 2 d mixed
PR, IR2C. Material in this basket from above L9752.

76 15.58 cl sh cr 2 d ir2c ir
ing necessarily later than IR2C. Material in this
751.