

CL

Locus L 9718	Dor 1991	Fld G	Sq A.1.31	Loc. type Fill
Open	Date 0.1/0.8/91	High at 1.4 2.8 N.W	Low at 1.4 1.7 S.W	Seals: _____
Close	Date 0.8/0.8/91	1.4 1.2 S.W	1.4 0.2 N.W	Sealed by: _____
Floor: type	_____	_____	_____	Loci 9.6.8.8 9.7.0.5 9.6.7.0 9.7.1.5
Length 2.0	Width 1.5	Vol _____	above 9.6.7.1	_____
Value id	Remove 0.8/0.8/91	Drawn? No	Loci below _____	_____
Photo #(1) _____	Photo #(2) _____	Loci _____		
Written by: D.P.W	Checked by: J.R.Z	Loci below _____		

Unit	Phase	Stage	Stratum	PoM
Summary				

Opened: When the mudbrick area of L9688, L9705 and western part of L9670 was leveled and seen to be continuous and different from the adjacent stony area to the east.

Limits (N) L9689, and L9714

(S) Balk L9670

(E) L9724, L9714

(W) Material below L9025

Closed: Not closed - End of Season

Matrix: Heavy mudbrick debris, more dense in the north west, few pottery sherds. Different from western adjacent area which has heavy scatter of fallen unworked stones 10-50cm in size and also different from area to the north east (L9714) which has a thin scatter of stones.

Relations: The locus is covered by but not sealed by L9688, L9705, L9670 and L9676. To the west L9718 reaches the material below L9025, and may continue into the balk. To the north L9718 reaches L9689, and the mudbrick layer below the field stones of L9714. To the east L9718 reaches L9724 which was created when its dense matrix of fallen wall stones clearly differentiated it from L9718. The matrix of 9718 does however contain some fallen wall stones, perhaps both loci contain debris from L9715. To the south the locus is bounded by the balk and continues into it.

It may turn out that 9718, 9689 and the material below 9714 will be collapsed into a single large mudbrick debris locus. Relation of 9718 to 9724 is rather uncertain; 9724 may be a continuation of 9714. Until a floor is found reaching W9715 it is better to treat 9715 as foundational; if so, W9715 has no relation to 9718.

Additional Observations/Value: The locus was sealed first by cobble floors, then by an iron age wall with associated pavements. The area is clean and good S.V.

Locus Basket List

L 9718

Bask. No.	Sq.	Beg. Ele.	Clo. Ele.	St Df	Lc St	Ob	Ma	R	C	P1	P2	P3
97002	AI31	14.28	14.08	sa		sh	cr	2		u	ir	
i BIC.												
97003	AI31	14.28	14.08	sa		ma	bn			u		
97013	AI31	14.20	14.08	sa		sh	cr			u		
Painted sherd.												
97015	AI31	14.17	14.17	sa		sh	cr			u	ir	
Cup and saucer.												
97035	AI31	14.08	14.08	sa		sh	cr	2		u	ir	
97036	AI31	14.08	14.08	sa		ma	bn			u		
97135	AI31	14.07	14.04	sa		sh	cr	2		u	ir	

Locus
L 9718

Sketch plan

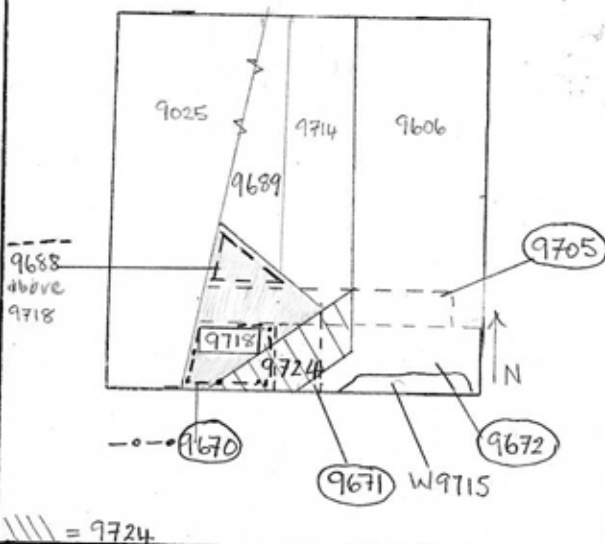


Photo.

Photo

Section

Section