

OK

Locus E 9714	Dor 1991	Fld G.	Sq A.131	Loc. type Field stone debris
Open	Date 31/07/91	High at 14.27	Low at 14.23	Seals: _____
Close	08/08/91	14.016	14.014	Sealed by: _____
Floor: type				Loci 9063 9606 _____
Length 3.0	Width 1.0	Vol	Drawn? XIES	above _____
Value id	Remove 08/08/91			below _____
Photo #(1) 70437	Photo #(2) 70438			
Written by: D.P.W	Checked by: J.R.Z			

Unit	Phase	Stage	Stratum	PoM
------	-------	-------	---------	-----

Summary

Opened: When a layer of field stones, referred to in L9063 (1986 cards) was reached. L9606 was divided and the central area was assigned its own locus number, L9714

Limits (N) Balk
(S) L9718
(E) L9606 (cleaning locus) down to L9063
(W) L9688 and L9689

Closed: Brought L9714 down to level of L9689 and the lower eastern portion of L9606. End of Season - not closed

Matrix: The cobble area of field stones ^{ranging from} 30x20x10cm to 15x13x10cm has pottery interspersed. It is different from the mudbrick debris in L9688 and L9689 which are to the west, and also different from the Persian pit in L9606 + L9063 to the east.

Relations: L9714 is covered but not sealed by L9606 (closed in 1991). To the north it reaches the balk and possibly continues in A132 - no substantial evidence for 9714 was found in A132. To the east it reaches the cleaning locus 9606 and L9063, a Persian pit which is decreasing in diameter. To the south it reaches L9688 where the cobbles L9724 are thicker and closer i.e. closer to the source of the collapse. A similar mass of stones was found at the east base L9705 and L9671 to the east. These stones are unnumbered since they were found near the end of the season their relation to 9714 is uncertain, and will have to be defined in a subsequent season. To the west of L9714 the loci 9688 and 9689 are cut by L9714.

It is possible that 9714 is rubble in the pit area, or wall collapse. There were several Persian sherds wedged among the stones, but this may be material from a pit ending on top of the cobbles. The mudbrick below may support the idea that it is wall debris. 9724, to the S (below 9705 which is sealed by L9636, and which is also below 9641 and 9671 which are sealed by L9047), seems to be similar material. If 9724 is a continuation of 9714 then 9714 must be Iron Age, since the sealing deposits are also Iron Age. This makes relations to 9688 and 9689, both mudbrick debris, most uncertain.

The closing level of L9606 was approximately 14.20, in 1991 30 cm of wash was removed and ten cm. of unexcavated material

Photos 70437 and 70438 have 9714 as 9689!

Additional Observations/Value: Non stratified debris of stones, little value.

Locus Basket List

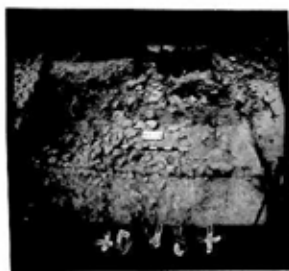
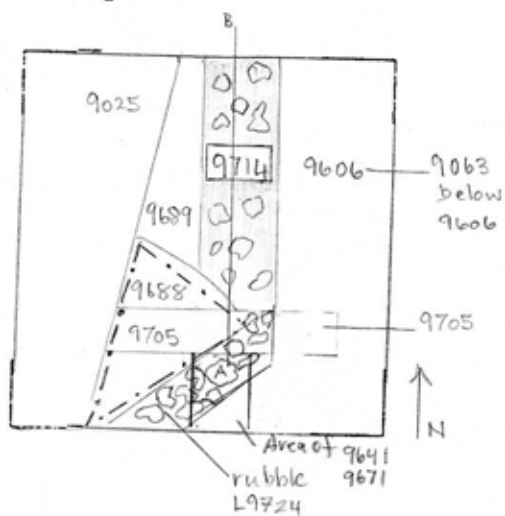
L 9714

Bask. No.	Sq. Comments	Beg. Ele.	Clb. Ele.	St Df	Lc St	Ob	Ma	R	C	Pi	P2	P3
96233	AI3I	14.27	14.13	sa	sh cr	0	d	ir			pr	
96934	AI3I Trash.	14.27	14.13	tz	sh cr	0	d	--				
96938	AI3I	14.27	14.13	sa	ma bn		d					
96941	AI3I Worked stone flake.	14.20	14.20	sa	tw st		d					
96972	AI3I 1 ribbed body sherd; 1 SGL.	14.30	13.86	sa	sh cr	0	d	pr				
96973	AI3I	14.30	13.86	sa	ma bn		d					
96975	AI3I	14.08	14.08	sa	tw st		d					
96987	AI3I Piece of hand made basin with thumb decorations.	14.08	13.86	sa	sh cr	2	d	pr				
97000	AI3I 1 CYA; 1 WST.	14.14	14.06	sa	sh cr	2	u	pr		ir		
97001	AI3I	14.14	14.06	sa	ma bn		u					

Locus

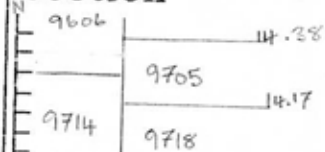
L 9714

Sketch plan



Pho'o

Section



Section



B FACING EAST A

9606 is erosional wash, last locus in this area was 9063