

Locus L9711	Dor 1991	Fid G	Sq AH33	Loc. type Mud-brick debris card 2
Open Date 0.1.08.91	High at 15.35 C	Low at 1.533 W	Seals: _____	
Close Date 0.4.08.91	14.88 W	14.88 E	Sealed by: 9274	
Floor: type _____	Width 0.3	Vol _____	Loci 9274 9257	
Length 1.7	Remove 0.11.08.91	Drawn? No	above _____	
Photo #(1) _____	Photo #(2) _____	Loci 9722	below _____	
Written by: R.S.S.	Checked by: J.R.Z.			

Unit _____	Phase _____	Stage _____	Stratum _____	PoM _____
------------	-------------	-------------	---------------	-----------

Summary _____

Opened: To excavate area below W9274.

Limits (N) W9278 and L9709.

(S) Fill below W9096

(E) See AH33 season 1991 card 1; extends to W9266

(W) L9666 and L9717

Closed: When leveled with base of L9699, L9711, L9708, L9709, L9717, L9699 and W9278 were collapsed into L9722.

Matrix: Hard, dark brown compact mud-brick. Similar to 9666, 9717, 9708, 9709, 9687, 9674, 9693, 9699 and 9722.

Relations: W9274 seals, cuts and covers L9711. L9711 covers SE portion of L9722. L9717 and L9666 are western continuations of L9711. L9711 continues N. in L9709. L9711 cuts to the N. by L9278. It appears to continue S. with the fill below W9096. L9711 continues below as L9722. L9711 reaches the top of W9266. L9637 (a winter-wash cleaning locus) reaches L9711.

Note: 9711 was excavated as 2 units. One to the E. of W9266, the other to the west of 9266. This card covers the material to the west.

Additional Observations/Value: Mud-brick debris locus sealed below W9274.
High Value

 Locus Basket List

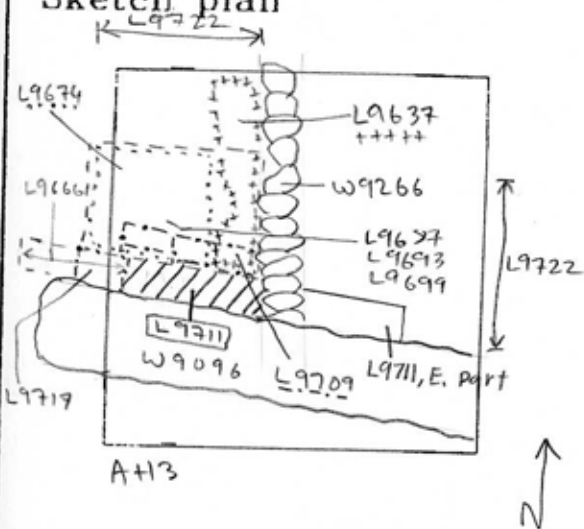
L 9711

Bask. No.	Sq.	Beg. Ele.	Clo. Ele.	St Df	Lc St	Ob	Ma	R	C	Pi	P2	P3
96956	AI33	15.77	14.88	fb		sh	cr	2	s	hi	ir	
Sealed below W9274; i rm.												
96965	AI33	15.77	14.88	fb		ma	bn		s			
96974	AI33	14.43	14.26	fb		tw	st		s			
Grinding stone.												

Locus

L 9711

Sketch plan



Photo

Photo

Section

Section

Locus 11 9711	Dor 19 9.1	Fld G	Sq A133	Loc. type FILL DOWN TO FLOOR?
Open Date 3/1/97/91	High at 15.53	at 1C	Low at 15.53	at 1C
Close Date 3/1/07/91	14.95	1C	14.98	2
Floor: type CF	Width 1.1	1	Vol 1.1	1
Length 0.7	Remove 3/1/07/91	Drawn? NO	Loci 9274	above below
Photo # (1)	Photo # (2)	Loci 9630	9266	
Written by: CLB	Checked by: JRZ	Loci below		

Unit	Phase	Stage	Stratum	PoM
------	-------	-------	---------	-----

Summary

Opened: OPENED AS A SEALED LOCUS UNDER 1W9274

Limits (N) Bounded by 9206

(S) BOUNDED BY 1W9096.1

(E) Bounded by 129611

(W) Bounded by balk with A133

Closed: CAME DOWN ON 1W9266 AND PORTION OF FLOOR 1F9305

Matrix: CONSIST OF DK. BROWN LOAM WITH POTTERY SHELFDS. VERY SIMILAR IN MAKEUP AS 129710, 129611 and 129706

Relations: 129711 IS SEALED BY 1W9274; 1W9266 CUTS 129711 TO THE SOUTH. 9711 CONTINUES INTO A133 TO THE WEST. 19711 IS CONTINUOUS INTO 9611 AS BOTH HAVE THE SAME MATRIX, THOUGH 9611 MAY BE A REBBER. 129711 COMES DOWN ON 1W9266 ALONG WESTERN EDGE OF LOCUS. SEE A133 FOR CONTINUATION UNDER 1W9274. 129706 TO THE NORTH IS MOST LIKELY PART OF THE SAME DEPOSIT UNDER A DIFFERENT WALL. * trench which removed 9274 above 9711 (or 9288 above 9710?). The small excavated area of 9611 make any conclusions uncertain.

9711 closes on top of W9266 and Floor 9305. Floor 9305 was first defined in 1988 and redefined in 1991. It reaches from W9282 in A134 on the N (which may cut it) to W9096 on the S. (which almost certainly cut it). Loci 9605 (clean locus in 1991), 9305 (original locus above Floor 9305), 9611, 9706, 9710 and 9711 all come to an end of Floor 9305. The locus below Floor 9305, across its entire extent, is 9630.

Additional Observations/Value: Sealed deposit below wall and above a floor. Possibly contaminated by Roman foundation trench. May have high value.

