

|                          |                           |                           |                    |  |
|--------------------------|---------------------------|---------------------------|--------------------|--|
| <b>Locus</b><br>L 9697   | <b>Dor 19</b> 9.1         | <b>Fld</b> G              | <b>Sq</b> AI, 34   | <b>Loc. type</b><br>E. Fill beside drain |
| <b>Open</b> 2.3/0.7/9.1  | <b>Date</b>               | <b>High</b> at 15.7.3 S.E | <b>Low</b> at      | <b>Seals:</b> _____                      |
| <b>Close</b> 2.5/0.7/9.1 |                           | 16.4.3 S.E                |                    | <b>Sealed by:</b> _____                  |
| <b>Floor:</b> type       |                           |                           |                    | <b>Loci</b> 9.1.99                       |
| <b>Length</b> 2.2        | <b>Width</b> 0.5          |                           | <b>Vol</b> _____   | <b>above</b> _____                       |
| <b>Value</b> _____       | <b>Remove</b> 2.5/0.7/9.1 |                           | <b>Drawn?</b> N.O. | <b>below</b> _____                       |
| <b>Photo #(1)</b> _____  | <b>Photo #(2)</b> _____   |                           |                    | <b>Loci</b> 9.2.82, 9.7.00, 9.7.01       |
| <b>Written by:</b> KAIL  | <b>Checked by:</b> J.R.Z  |                           |                    |  |

|                   |                    |                    |                      |                  |
|-------------------|--------------------|--------------------|----------------------|------------------|
| <b>Unit</b> _____ | <b>Phase</b> _____ | <b>Stage</b> _____ | <b>Stratum</b> _____ | <b>PoM</b> _____ |
|-------------------|--------------------|--------------------|----------------------|------------------|

**Summary**

**Opened:** Opened [9697] to remove exterior wall surface soil separating AI34 and AH34 in order to define loci below surface soil.

**Limits (N)** L9618  
**(S)** AI33: unexcavated in '91  
**(E)** AH34: L9252 L9249  
**(W)** L9111: L9642

**Closed:** Closed [9697] when discovered top of W9292 which continues westward from AH34 but had stopped within walls [9697]. [9697] closed soil was divided into W9292, L9700 mudbrick and L9701 pit material.

**Matrix:** [9697]'s soil was dry, coarse, and hard-packed with few inclusions, but a lot of kurkur and stone/shell bits. [9697] was drier with less pottery than pit L9614 and unlike L9252 or L9249 medium brown soil at the east. Similar to L9199 above in '87 which was similar to topsoil with harder packed light brown soil below. Dissimilar to pit-like material in L9642 which matched L9614.

**Relations:** [9697] may be the same matrix as '87's L9199 above it which was fill beside drain L9111. L9111 and material below, L9642 combined. Level is at 15.86-15.91. L9199 and L9697's combined level is 16.17 (top of E drain wall) - 15.43. L9199 and [9697] could be a uniform fill beside drain L9111 and L9642. [9697] follows cut at the same level L9642 stops and becomes completely different material: W9282, L9700 pure mudbrick and L9701 pit-like material (like L9681). [9697] reaches or may be cut by robber trench L9618 at the robbery W9282's proposed NS continuation. East, [9697] reaches L9252 at the north and L9249 at the south. [9697] is the same material as either L9252 or L9249 (which seems more similar to L9701) and they are probably separate deposits. The area in AI33 that reached [9697] at the south wasn't excavated in '91. West of [9697] was drain L9111 and material below drain L9642, L9199 and L9697 could have been cut by drain L9111. L9199 covers, but does not seal 9697; 9697 covers but does not seal 9282, 9700 and 9701. If 9618 is a Robber Trench for a N. extension of 9282, and 9697 covered part of 9697, it is possible that the N. part of 9697 contained undetected. At the north, [9697]'s excavation revealed the <sup>western</sup> continuation of W9282 from AH34. Robber Trench material

**Additional Observations/Value:** Unless except covering more unclear pit-ish, fill-ish material. Blah.

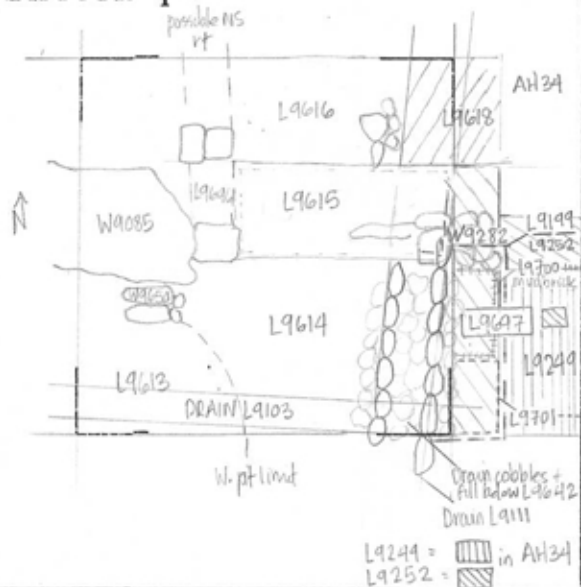
Locus Basket List

L 9697

| Bask. No. | Sq.  | Heg. Ele. | Cio. Ele. | St Df | Lc St | Ob | Ma | R | C  | Pi | P2   | P3 |
|-----------|------|-----------|-----------|-------|-------|----|----|---|----|----|------|----|
| 96739     | AI34 | 15.73     | 15.66     | sa    | sh    | cr | 0  | u | pr |    | ir2c |    |
| 96749     | AI34 | 15.62     | 15.43     | ss    | sh    | cr | i  | d | pr |    | ir   | rm |
| 2 CYA.    |      |           |           |       |       |    |    |   |    |    |      |    |
| 96768     | AI34 | 15.61     | 15.61     | pt    | ot    | fa |    | u |    |    |      |    |
| Faience?  |      |           |           |       |       |    |    |   |    |    |      |    |
| 96769     | AI34 | 15.52     |           | pt    | sh    | cr | 3  | u | pr |    |      |    |
| 96794     | AI34 | 15.43     | 15.43     | pt    | jw    | st |    | d |    |    |      |    |
| Bead.     |      |           |           |       |       |    |    |   |    |    |      |    |

LOCUS  
L: 9697

Sketch plan



Photo

Photo

Section

Section