

Locus 9671	Dor 19 9.1	Fld 9.1	Sq A.I.3.1	Loc. type Fill
Open Date 1.6/0.7/9.1	High at 1.4.6.9 NIE	Low at 1.4.6.7 SIE	Seals: _____	
Close Date 0.11/0.8/9.1	1.4.1.18 NIE	1.4.1.16 SIE	Sealed by: _____	
Floor: type Length Value	Width Remove	Vol Drawn? N101	Loci above	
Photo #(1) 70358	Photo #(2) 70360	Loci below		
Written by: D.P.W	Checked by: J.R.Z			

Unit	Phase	Stage	Stratum	PoM
------	-------	-------	---------	-----

Summary

Opened: When the base of W9636 was reached, L9654 was closed and L9670, L9671 and L9672 were opened at the same level.

Limits (N) W9636, L9705

(S) Balk.

(E) L9672, L9620.

(W) L9670, L9654

Closed: When L9670, L9671, a part of L9672, L9705 and L9688 were seen to be mudbrick debris, they were collapsed into L9718

Matrix: Heavy mudbrick packed debris, large field stones in the balk. The matrix is identical to that in L9670, and to L9653 north of W9636. It is also similar to loams below W9636, L9705, only the western part of L9672 is mudbrick fill similar to L9671.

Relations: L9671 is covered by L9641, which was sealed by W9047. It covers, <sup>but does not seal,</sup> L9718. To the north the locus is cut by wall W9636 as W9636 is foundational at this level. Locus 9671 is probably the same as L9705 below W9636. To the east L9671 seems to be the same as the material in the western part of L9672. (The eastern part of 9672 is cut by a Persian pit) To the south L9671 may extend into the balk; W9715, a field stone wall, cuts into the balk at the eastern end of the locus and there are field stones in the balk. On the west L9670 has the same matrix as L9671.

Additional Observations/Value: Not sealed, cut by a wall. Stratigraphic value low.

Locus Basket List

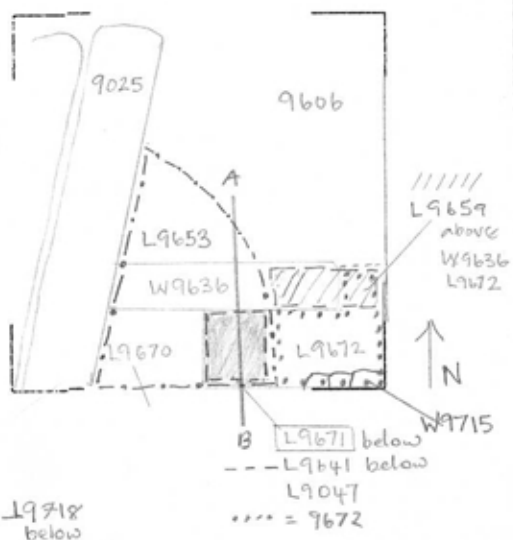
L 9671

Bask. No.	Sq.	Beg. Ele.	Clc. Ele.	St Df	Lc St	Ob	Ma	R	C	Pi	P2	P3
96878	AI3I	14.88	14.39	sa		sh	cr	2	s	ir2c		
i Assyrian bowl.												
96897	AI3I	14.39	14.27	sa		sh	cr	2	s	ir2a		
96898	AI3I	14.39	14.27	sa		ma	bn		s			
96888	AI3I	14.23		sa		sh	cr	2	u	ir		

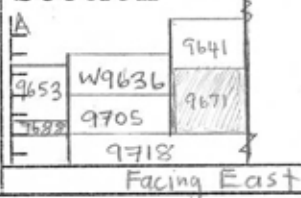
Locus

B 9671

Sketch plan



Section



Section

