

| | | | | |
|-----------------|------------------|-------------------|-----------------|-------------------------------|
| Locus L 9666 | Dor 199.1 | Fld G | Sq A.733 | Loc. type Mud brick debris |
| Open | Date 1.6.979.1 | High at 1.5.34 W | Low at 1.5.32 E | Seals: _____ |
| Close | 1.8.079.1 | 1.5.11 W | 1.5.08 E | Sealed by: W9287 |
| Floor: type | | | | Loci W9287 L9638 |
| Length L.2 | Width 0.4 | Vol | | above _____ |
| Value S | Remove 1.8.079.1 | Drawn? Na | | below _____ |
| Photo #(1) | | Photo #(2) | | Loci W9684 |
| Written by: RSS | | Checked by: J.R.Z | | below _____ |

| | | | | |
|------|-------|-------|---------|-----|
| Unit | Phase | Stage | Stratum | PoM |
|------|-------|-------|---------|-----|

Summary

Opened: To investigate foundation courses for W9051, W9278, W9274 and W9096

Limits (N) Bounded by W9278

(S) Bounded by L9665 and W9096

(E) Bounded by W9274

(W) Bounded by W9051

Closed: Loops came down on S. continuation of W9684. Subdivided into two (as yet unnumbered) loci.

Matrix: Hard, compact dark brown mud-brick. A continuation of L9665 to S. Similar to fill below W9096. Fill appears similar to L9687, L9694, L9648, and L9639

Relations: L9666 is cut by W9278 to N., W9051 to the W., W9274 to the E. The top of L9666 is cut by W9096 to the S. L9666 reaches (and is almost certainly a N. continuation) of L9665. L9666 covers L9684. The base of W9051 and W9278 reach the bottom level of L9666. These begin to float where L9666 is closed (which is also the top level for W9684). L9666 covers W9684.

Additional Observations/Value:

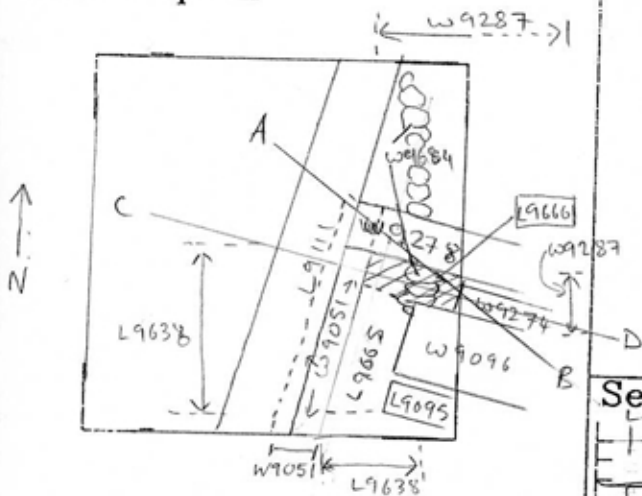
Locus Basket List

L 9666

| Bask. No. | Sq. | Beg. Ele. | Clo. Ele. | St | Lc | Df | St | Ob | Ma | R | C | Pi | P2 | P3 |
|-----------|------|-----------|-----------|----|----|----|----|----|----|---|------|----|----|----|
| 96558 | A133 | 15.34 | 15.08 | sa | | | sh | cr | 2 | u | ir2c | | | |
| 96560 | A133 | 15.34 | 15.08 | sa | | | ma | bn | | u | | | | |

Locus
L 9666

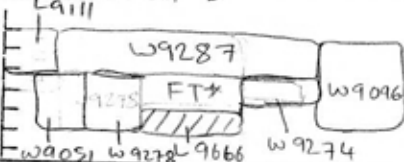
Sketch plan



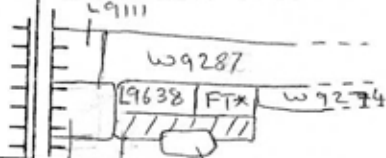
Photo

Photo

Section A-B



Section C-D



* foundation trench for W9287

W905, L9666, W9684