

TEL DOR

19 89

field

G

square

AI32

phase (in area):

LOCUS L9551

date opened

07/08/89

level

high 14.70 low 14.44

date closed

11/08/89

level

1401

floor level

type of locus stratified.

Fill - accumulation

loci above

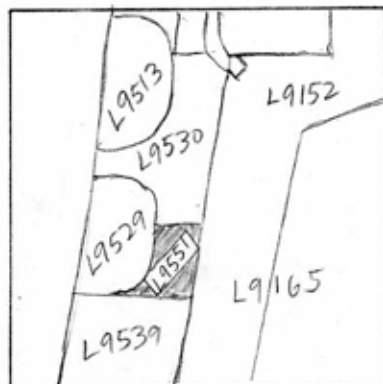
L9508 = 9503

loci below

none yet

sealed by

graphic description



new bank line

section

photos

- reason for opening
- definition / limits
- reason for closing
- relation to other elements
- working photos, nos:
- publication photos
- architects permission

written by R. Palmerchecked by J. Zorn

final locus no.

arch. unit / logical area

stage (in sq.)

final STRATUM

Summary:

Description:

the middle of three

Opening: To excavate disturbed areas observed in taking down [L9503] & [L9508] and in cutting a section in earth pedestal beneath them^{on E+W} (from S to N: [L9539], [L9551], [L9530])

Def & Limits: To N, bounded by [L9530]. To E, bordered by [L9165] and [L9152]. To S, bounded by [L9539]. To W, bounded by [L9529]

Matrix: Soil same as locus above, [L9508] - hard greyish white soil

Closing: End of season - Not fully excavated, not closed

Relations: To N, relationship between [L9551] and [L9530]

unclear *but may be best understood as a TWZ for pit [L9529] (see card for [L9529])

Pit [L9529] probably cuts [L9551]

Pit [L9539] probably cuts [L9551]

The relationship between [L9551] and [L9152] and [L9165] to E is unclear.

since the description of their matrices on the locus cards quite dissimilar. *However, it

is possible that [L9551] & [L9530] contain the same material despite their different

