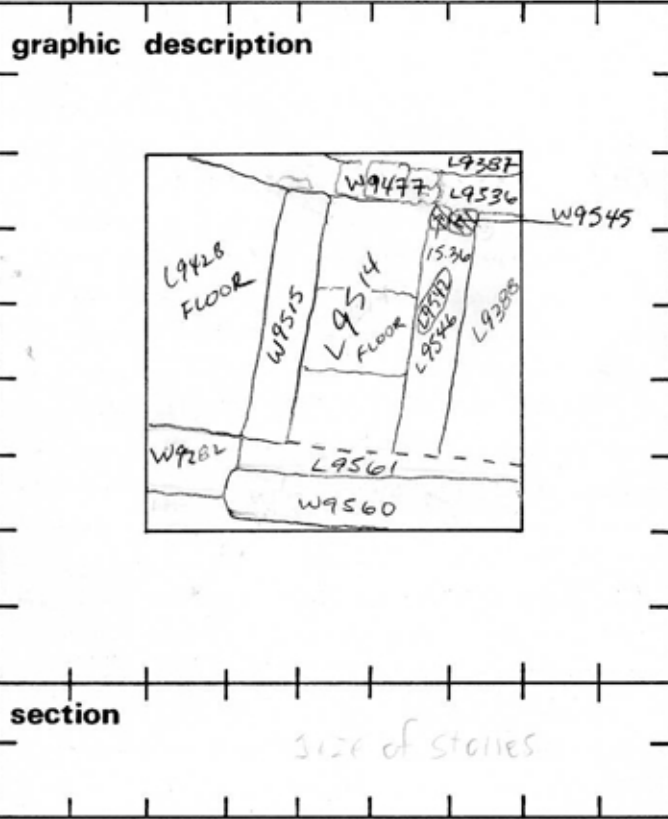


TEL DOR 19 89 field G square A6.34 phase (in area): LOCUS W9545

date opened 03/08/89 level 1536 date closed 09/08/89 level 1519 floor level \_\_\_\_\_ type of locus Not a wall  
WALL

loci above L9542 loci below None yet sealed by \_\_\_\_\_



section size of stones

photos

- reason for opening
- definition / limits
- reason for closing
- relation to other elements
- working photos, nos:
- publication photos
- architects permission

written by A.M. ABRANTES checked by J. Zorn

final locus no.	arch. unit / logical area	stage (in sq.)	final STRATUM

Summary:

Description: OPENED: UPON REACHING W9545  
BELOW L9542

DEFINITION/LIMITS: BOUNDED BY L9387 TO THE EAST,  
L9536 TO THE NORTH, L9514 TO THE WEST,  
L9546 TO THE SOUTH.

CLOSED: NOT CLOSED, END OF SEASON

MATRIX: TWO ROUGHLY SQUARED STONES,  
ORIENTATION OF ASSOCIATED ROBBED TRENCH  
L9542 L9546 IS NORTH-SOUTH

RELATION TO OTHER ELEMENTS: REACHES LINE OF SOUTH  
FACE OF W9477 \*REACHED BY L9514, FLOOR L9514 AND W9545  
SHOULD HAVE REACHED ONE ANOTHER <sup>were they both preserved.</sup>  
ROBBED TRENCHES L9542 L9546 FOR  
W9545 REACH LINE OF NORTH  
FACE OF W9282; L9536 REACHES W9545  
W9545 APPARENTLY BELONGS TO  
SAME ROMAN PHASE AS W9477,  
W9515 AND THE ROMAN RE-USE OF  
W9282, WHICH ARE CONTEMPORARY  
WITH THE ROMAN BASEMENT TO THE WEST  
IN UNIT. AH34 (1988 SEASON)

LOCUS W19545

## BASKET LIST

basket no.	level	str def	cont	R +	periods	comments
						<p>[W9282] PROBABLY EXTENDED EASTWARD, AND WOULD HAVE BEEN ABUTTED BY [W9515] AND [W9545] THIS IS SUGGESTED BY THE SOUTHERN LIMITS OF [W9515] AND ROBBED TRENCH [L9546] FOR [W9545] WHICH ARE ORIENTED TOWARD THE LINE OF THE PRESERVED PORTION OF [W9282] BOTH [W9545] AND [W9515] ARE IN ORIENTATION WITH [W9301] AND [W9253] WHICH ABUT [W9282] IN UNIT AH34, SUGGESTING THAT THEY BELONG TO THE SAME BUILDING</p> <p>* i.e. where [W9477] would have extended to the E were it not robbed out by [L9536].</p>