

TEL DOR

19

89

field

G

square

A I 32

phase (in area):

LOCUS

L9530

date opened

02/08/89

level

14.65

date closed

11/08/89

level

14.23

floor level

type of locus

Fill

loci above

L9503

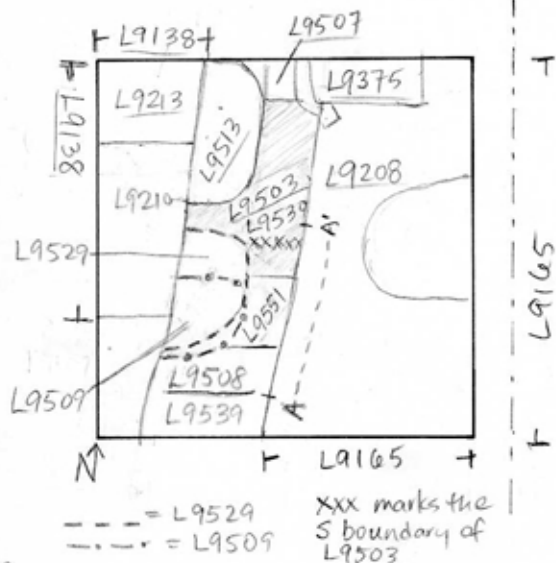
L9508

loci below

none yet

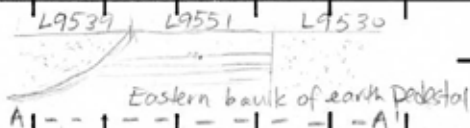
sealed by

graphic description



section

N →



photos

- reason for opening
- definition / limits
- reason for closing
- relation to other elements
- working photos, nos:
- publication photos
- architects permission

written by

P. Palmer

checked by

final locus no.

arch. unit / logical area

stage (in sq.)

final STRATUM

Summary:

Description:

Open: In taking down [L9503] & [L9508] and in cutting a section in earth pedestal beneath them, we saw three distinct areas of soil disturbance, two of which lay beneath [L9503] (ie. [L9551] & [L9530])

Def & Limits: To N, bordered by [L9507] & [L9375]. To E, bounded by [L9165] & [L9208]. To S, bounded by [L9551]. To W, bordered by [L9509], [L9529], [L9210] & [L9138].

Matrix: Hard-whitish soil above; rather loosely packed in S half of locus becoming more clay-like and darker (mudbrick debris) in N half of [L9530] particularly at N end where reaches [L9507]

Closing: End of Season - Not fully excavated, not closed

Relations: [L9530] reaches material below [L9507]. To E, may be identical to material of [L9208] which is an area of fill containing mudbrick debris. Locus card for [L9208] also suggests that [L9213] to W of earth

