

TEL DOR

1989

field

G

square

A.K.3.4

phase (in area):

LOCUS 49.5.29

date opened

01/08/89

level

1511

date closed

02/08/89

level

1501

floor level

type of locus

PIL

loci above

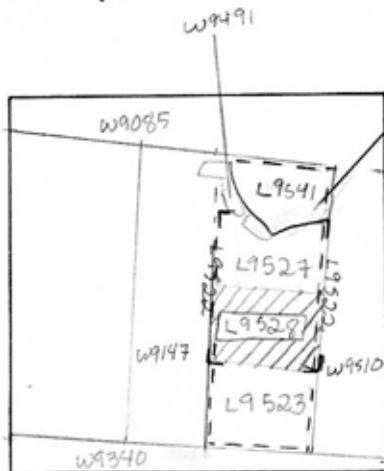
L9522

loci below

L9537

sealed by

graphic description



final locus no.

arch. unit / logical area

stage (in sq.)

final STRATUM

Summary:

Description:

REASON FOR OPENING: CAME DOWN ON MUDBRICK MATERIAL IN N. PORTION OF [L9522] - THIS BECAME [L9527]. CONTINUED AS H, PLASTER AND POTTERY ACCUMULATION BECAME [L9528].

MATRIX LOOSE GREY EARTH CONTAINING SOME ASH AND PLASTER MUCH POTTERY.

DEFINITION/LIMITS: BOUNDED ON N BY [L9527] ON S. BY [L9523] ON E BY [W9510] ON W. BY [W9147].

section

REASON FOR CLOSING: CAME DOWN ON SOIL CONTAINING MUDBRICK MATERIAL AND ROCKS UNDER [L9523], [L9527], [L9528] AND [L9541] COLLAPSED INTO [L9537].

photos

- reason for opening
- definition / limits
- reason for closing
- relation to other elements
- working photos, nos:
- publication photos
- architects permission

written by W. SWANSONchecked by J. Zorn

RELATIONS: COVERED BY [L9522]. CUTS [L9527]. POSSIBLY PART OF PIT WITH [L9522] [L9528]. COVERS PART OF [L9537]. IF [L9528] IS PART OF THE SAME PIT/FEATURE AS [L9522] (see that card) it may reach [W9510] and be cut by [W9147].

