

TEL DOR

19 89

field

6

square

A6.34

phase (in area):

LOCUS <sup>CARD 1 OF 2</sup> W19515

date opened

31/07/89

level

1550

date closed

09/08/89

level

1524

floor level

type of locus

WALL

loci above

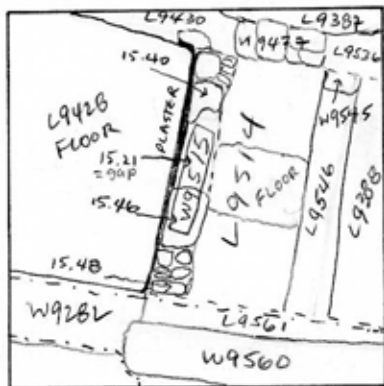
L9478

loci below

None YC1

sealed by

graphic description



--- = L9535

section

photos

- reason for opening
- definition / limits
- reason for closing
- relation to other elements
- working photos, nos:
- publication photos
- architects permission

written by A.M. ABRANTES checked by J. Zorn

final locus no.

arch. unit / logical area

stage (in sq.)

final STRATUM

Summary:

Description: OPENED UPON REACHING W9515 BELOW  
L9478

DEFINITION/LIMITS: BOUNDED BY L9428 AND FLOOR  
9428 TO THE WEST; L9514 AND FLOOR 9514 TO  
THE EAST; L9535, L9561 TO THE SOUTH, W9477  
AND L9430 TO THE NORTH

CLOSED: NOT CLOSED, END OF SEASON

MATRIX: SINGLE COURSE OF ASHLARS AND SMALL FIELD  
STONES RUNNING NORTH-SOUTH, WITH A GAP IN THE CENTER

SUGGESTING A DOORWAY OR ROBBED OUT BLOCKS

NORTHERN BLOCK HAS SEMICIRCULAR CUT IN

ITS SOUTHEAST CORNER SUGGESTING DOOR SOCKET

W9515 IS PLASTERED ON ITS WEST AND EAST FACES

RELATION TO OTHER ELEMENTS: FLOOR  
9428 REACHES W9515 WITH  
PLASTER RISING FROM FLOOR AGAINST  
WEST FACE OF W9515, PLASTER RIDGE SPANS  
GAP IN W9515 ALSO.

FLOOR 9514 REACHES <sup>PART OF</sup> W9515 <sup>AND LINE OF</sup> A GAP IN W9515  
W9515 REACHES LINE OF NORTH  
FACE OF W9282; PLASTER FACING OF  
W9282 REACHES SOUTHWEST CORNER OF  
W9515

CONTINUED →



<b>Locus</b> WJ 9,5,1,5	<b>Dor</b> 1997	<b>Fld</b> G <sub>1</sub>	<b>Sq</b> AG34	<b>Loc. type</b> WALL
<b>Open</b> 03/07/97	<b>Close</b> 11/08/97	<b>High</b> 15.43	<b>Low</b> 15.13	<b>Seals:</b> _____
<b>Floor: type</b> _____	<b>Width</b> 0.5	<b>Remove</b> 1/1/1	<b>Vol</b> _____	<b>Sealed by:</b> _____
<b>Length</b> 3.0	<b>Drawn?</b> YES	<b>Loci above</b> SEE 1989 LOCUS CARD		
<b>Photo #(1)</b> SEE 158A	<b>Photo #(2)</b> SEE 158A	<b>Loci below</b> UNEXCAVATED		
<b>Written by:</b> M.A.S	<b>Checked by:</b> J.A.Z			

<b>Unit</b> _____	<b>Phase</b> _____	<b>Stage</b> _____	<b>Stratum</b> _____	<b>PoM</b> _____
-------------------	--------------------	--------------------	----------------------	------------------

**Summary** \_\_\_\_\_

**Opened:** SEE 1989 LOCUS CARD

**Limits (N)** W18226  
 (S) SEE 1989 LOCUS CARD  
 (E) SEE 1989 LOCUS CARD  
 (W) F9428, L18203, L18204, L18211, L18222, L18238, L18287, L18288, L18301

**Closed:** NOT CLOSED; END OF SEASON.

**Matrix:** SEE 1989 LOCUS CARD. BOTH HEADER AND STRETCHER. 4-6 COURSES OF ASHLARS 20-65 CM WIDE AND 17-20CM HIGH, AND 15-20CM FIELD STONES. STRETCHER ASHLARS ARE CONNECTED TO CONCRETE F18204 IN THE 1ST COURSE. THERE IS A 80x50 CM IN THE MIDDLE OF W9515 WHICH IS PROBABLY A THRESHOLD; THERE IS A DOOR SOCKET IN AN ASHLAR IN THE NORTH PART OF THE DOORWAY SECOND COURSE WITH ITS THRESHOLD, THE COURSES BECOME MIXED ASHLAR/FIELD STONE COMPARED TO THE 1ST TWO COURSES.

**Relations:** SEE 1989 LOCUS CARD.  
 N: W9515 DOVETAILS IN W18226.  
 W: W9515 IS REACHED BY ROBBED TRENCH L18203 AND L18204, THE MAKEUP OF F9428. THE THRESHOLD IN W9515 AT 15.21-15.15M GOES WITH F9428 AT 15.30-15.24M. W9515 CUTS L18211, L18222, L18238, L18287, L18288 AND L18301 BECAUSE W9515 IS PROBABLY A ROMAN FOUNDATION WALL AND THESE CUT LOCI ALL HAVE IRON AGE POTTERY READINGS EXCEPT FOR L18211 WHICH ALSO HAS SOME PERSIAN AND SOME ROMAN POTTERY. W9515 PROBABLY CUT F18222, F18238 AND F18288 BUT THESE FLOORS WERE SCRAPPY AND DID NOT CONTINUE ALL THE WAY TO W9515.

**Matrix continued:** WHICH ARE ONLY ASHLARS. THE SOUTHERN PART OF W9515 HAS TWO COURSES FOR EVERY ONE COURSE OF THE NORTHERN PART OF W9515. THE STONES ARE ALSO SMALLER - 10-15CM HIGH 10-30CM WIDE.

**Additional Observations/Value:** HIGH VALUE PROBABLY ROMAN FOUNDATION

LOCUS

W 9515

Sketch plan



166773



166770



167520



167529



167508



167512

W9515

F9428, L18211, L18204

L18222

L18232, F18235, L18287, L18288, L18301

F18288