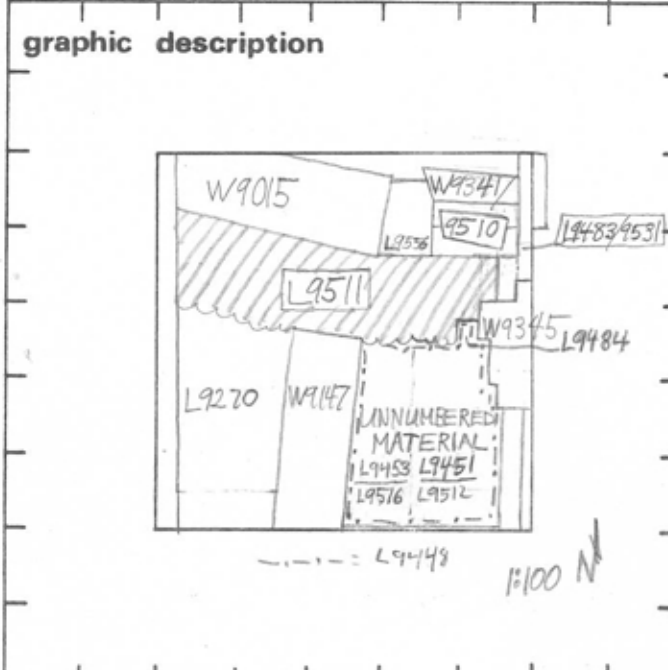


TEL DOR 1989 field G square AK33 phase (in area): Later than 1 LOCUS L9511-
 date opened 31/07/89 level 1544 date closed 11/08/89 level 1515 floor level _____ type of locus POSSIBLE ROBBER TRENCH
 loci above L9270 loci below None Yet sealed by _____



graphic description	final locus no.	arch. unit / logical area	stage (in sq.)	final STRATUM
---------------------	-----------------	---------------------------	----------------	---------------

Summary:

Description: REASON FOR OPENING: CLEAR CENTRAL PART OF SQUARE IN order to better define [W9015], and to see if debris below might be part of the Blob [W9003].

DEF. & LIMITS: BOUNDED ON THE N BY [W9015], [L9556], [W9347/9510]; ON THE W BY THE BULK; ON THE E BY [L9483/9530] AND [W9345]; ON THE S BY [L9270], [W9147], [L9484], [L9451], [L9453], [L9512], [L9516] AND UNNUMBERED MATERIAL.

MATRIX: RUBBLE, WITH A GRAY, LOOSE SOIL. SOME OF THE STONES IN THE W END INTERMIXED WITH CONCRETE.

REASON FOR CLOSING: NOT CLOSED. END OF SEASON.

section

RELATION TO OTHER ELEMENTS: [L9511] IS POSSIBLY FALLEN MATERIAL FROM [W9015]. *IT REACHES [W9015], CUTS [L9270], [W9147], [L9448], [L9451], [L9453], [L9512], [L9516], [L9484].

photos

- reason for opening
- definition / limits
- reason for closing
- relation to other elements
- working photos, nos: 48542
- publication photos
- architects permission

written by R. Lethbridge checked by J. Zorn

*OR POSSIBLY A ROBBER TRENCH OF [W9003]. 11 16' 0"

(entered)

Locus L 9511	Dor 19 91	Fld G1	Sq AK33	Loc. type robber trench card 2
Open Date 8/18/91	High at 1.5.6.4 E	Low at 1.1.1.1	Seals: _____	
Close Date 11/18/91	14.7.6 N/E	1.1.1.1	Sealed by: _____	
Floor: type 1	Length 4.0	Width 1.0	Vol _____	Loci L9271 _____
Value d	Remove 1/1/1	Drawn? Yes		above _____
Photo #(1)	Photo #(2)			Loci L9645 L9644 _____
Written by: JYS	Checked by: JRZ			below _____
Unit	Phase	Stage	Stratum	PoM

Summary

Opened: See Card # 1 ('89 season)

Limits (N)

bounded on the N by [W9015], [L9604], and [W9510]

(S) See Card # 1

(E) bounded on the E only by [W9345] in the '91 season.

(W) bounded on the W by the bank.

Closed: Came down on rocky kukkar layer in E of locus different from the rubble/loose fill matrix of [L9511]. The portion of [L9511] W of [W9147] was left unexcavated.

Matrix: Fieldstone cobbles and stones in a loose grey fill with some pottery, bones and glass. Two ashlers and one flagstone (non in situ) were also excavated from this locus.

Relations:

For previous relations see Card # 1. In the '91 season [L9511] covers [L9645], which appears to be the continuation of [L9511], being of the same matrix although with fewer fieldstones. [L9511] also covers [L9644], a thin layer of crushed kukkar that extends beneath [W9510] and is [W9510]'s foundation trench. Thus, [L9511] cuts [W9510] or the robber trench of [W9510]. [L9511] reaches [L9604] for the most part, but may cut it slightly at the S edge of [L9604]. [L9511] still appears to be cut by [W9345], but may only reach [W9345] given that all of the material of [W9345] rests solely on the pit material of [L9633], which is earlier than [L9511], and that nowhere does [W9345] cover any of [L9511] or its hypothetical extensions. Also, [L9511] cuts [L9633] at the W boundary of [W9345] below [W9345]. In the section drawing, [L9655] is the continuation of pit [L9633]. Because a portion of [L9511] remains unexcavated in the West (see sketch plan), it has yet to be removed and hence has no removal date as of yet. Cleaning locus [L9603] reaches the material of [L9511].

Additional Observations/Value:

E-W running robber trench that cuts [W9147] and [W9510] or its robber trench.

Locus Basket List

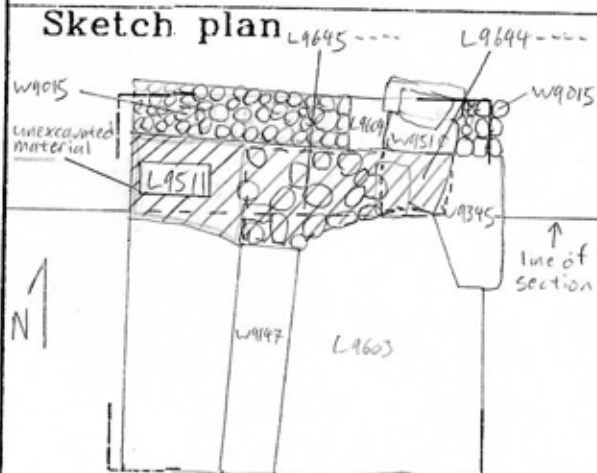
L 9511

Bask. No.	Sq.	Beg. Ele.	Clo. Ele.	St Df	Lc Ob	Ma	R	C	P1	P2	P3
96085	AK33	15.64	15.06	rt	sh cr	2	d	ir	pr	rm	
Pottery from foundation trench.											
96099	AK33	15.16	14.90	rt	sh cr	2	d	ir	pr		
CYA.											
96134	AK33	15.16	14.90	rt	sh bn		d				
96137	AK33	15.16	14.90	rt	sh gl		d				
Piece of glass.											
96204	AK33	15.11	14.76	rt	sh cr	2	d	ir2c	pr	rm	
Pottery from robber trench. SMR, BOR, ATC, ETH.											
96217	AK33	15.11	14.76	rt	sh gl		d				
96222	AK33	14.81	14.81	rt	sc st		d				
Limestone shin and calf sculptural fragment.											
96242	AK33	15.11	14.76	rt	ma bn		d				

Locus

L 9511

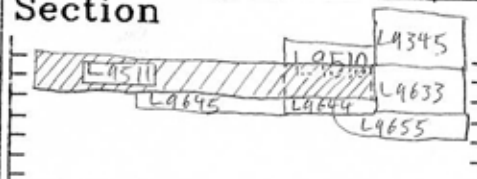
Sketch plan



Photo

Photo

Section



Section