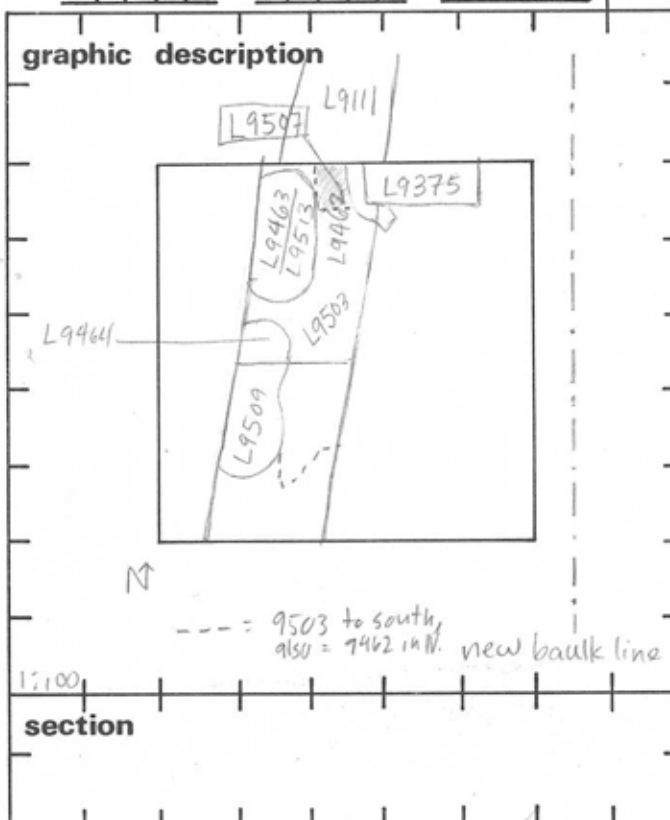


TEL DOR 19 89 field G square AI.32 phase (in area): LOCUS L9.507
 date opened 31/07/89 level 14.85 date closed 11/08/89 level 14.85 floor level _____ type of locus Fill-Stratified Accum.
 loci above L9.462 loci below none yet sealed by _____



final locus no.	arch. unit / logical area	stage (in sq.)	final STRATUM

Summary:

Description:

Open: In taking down [L9462], Came down on small patch of yellowish, hard-packed Clay-like soil at N end of locus

Def & Limits: To N, bordered by material below drain [L9111] / To E, bounded by material below [L9375]. To S & W bordered by loci below [L9503] & [L9513].

Matrix: Clay-like soil, yellowish, very hard packed

Closing: Not Excavated - End of Season

photos

- reason for opening
- definition / limits
- reason for closing
- relation to other elements
- working photos, nos:
- publication photos
- architects permission

written by R. Palmer checked by J. Zorn

* see reverse

Relations: [L9507] reaches material below [L9375]. [L9507] covered by [L9462]. [L9507] probably cut by [L9503] since [L9507] seems to contain mudbrick material which * may be associated with mudbrick material of [L9107] in Sq. AI.33 to N, which belongs to a "fill (below street?)"; ^{opening} elevation of [L9107] = 15.93, closing = 14.86. Material below [L9107] consists of yellow sand. Relationship between pit [L9463] / [L9513] not certain, but probable

