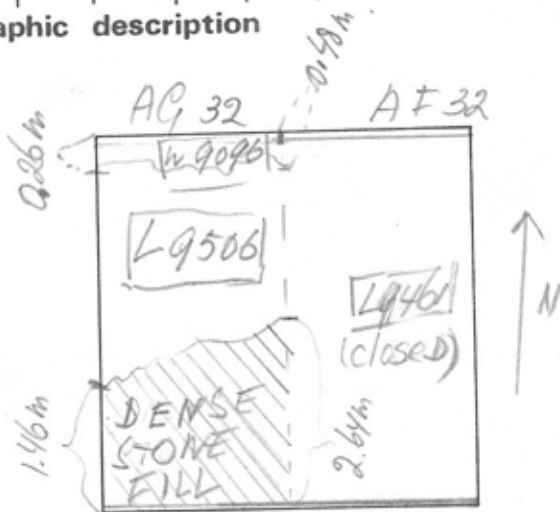


TEL DOR 19 89 field 9 square AQ-E.32 phase (in area): _____ LOCUS 19506
 date opened 28/7/89 level 16.32 date closed OPEN AT END OF SEASON level 16.08 floor level 16.08 type of locus TOP SOIL
 loci above L9464 loci below _____ sealed by A. ONE

final locus no. _____ arch. unit / logical area _____ stage (in sq.) _____ final STRATUM _____

graphic description



Summary:

Description:

REASON FOR OPENING: Came down on W9096 along N. edge of square. L9461 closed and L9506 opened to begin excavate below top of preserved portion of W9096.

Limits: Bounded by balk in S., by W9096 in N., by E. balk and by line dividing AQ 32 in half from N-S in W.

REASON FOR CLOSING:

L9506 WAS LEFT OPEN AT END OF SEASON, not closed.

RELATION TO OTHER ELEMENTS: Covered by L9461, cut by W9096. Dense stone fill may be a floor (Ruthama's observation);

Area between "Floor L9506" and W9096 may be a Robber Trench, or other disturbance, that cut L9506. Further excavation is necessary to test this. (I. Sharon + J. Zorn do not believe this to be a floor in '89.)

section

photos

- reason for opening
- definition / limits
- reason for closing
- relation to other elements
- working photos, nos: none
- publication photos none
- architects permission

written by E. KELLS checked by J. Zorn

