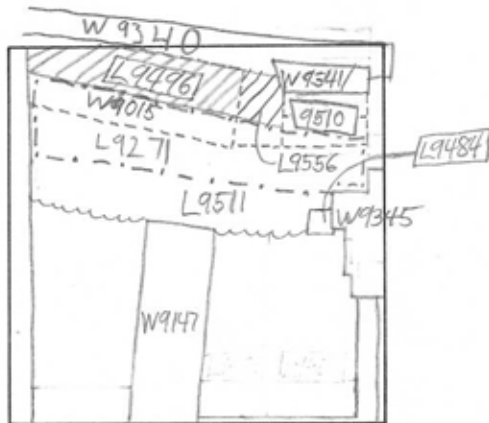


TEL DOR 1989 field G square AK33 phase (in area): LOCUS L9496-
 date opened 26/07/89 level L604 date closed 31/07/89 level L575 floor level _____ type of locus R.T.
STRATIFIED ACCUMULATION
 loci above Balk loci below W9015 L9556 sealed by _____

graphic description



section

photos

- reason for opening
- definition / limits
- reason for closing
- relation to other elements
- working photos, nos:
- publication photos
- architects permission

written by R. Lethbridge checked by J. Zorn

final locus no. _____ arch. unit / logical area _____ stage (in sq.) _____ final STRATUM _____

Summary:

Description: REASON FOR OPENING: TO LEVEL N EDGE OF SQUARE, which was below balk last season, to old level of L9271

DEF./LIMITS: BOUNDED ON THE N BY [W9340/9041] IN AK 34, ON THE W BY THE BAULK, ON THE E BY [W9341/9510], ON THE S BY [L9271].

MATRIX: KURKAR RUBBLE, HEAD AND FIST SIZE WITH SOME LIMESTONE, WITH A GRAY, POWDERY SOIL. AN OCCASIONAL SHEARD OR GLASS FRAGMENT.

REASON FOR CLOSING: EXCAVATION REVEALED [W9015] BELOW. LOCUS SPLIT INTO [W9015] IN THE W AND [L9556] IN THE E.

RELATION TO OTHER ELEMENTS: [L9496] may be cut by [W9340], [W9341/9510]; IT PARTIALLY COVERS [W9015] AND [L9556].

IS '02: R.T. of W9015.

example of rubble matrix of W9015

