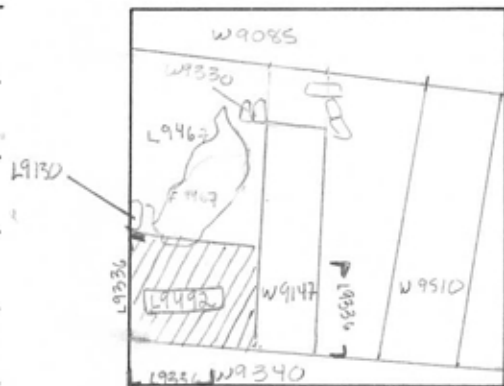


TEL DOR 1987 field G square A.K.34 phase (in area):
 date opened 26/07/89 level 15.59 date closed 11/09/89 level 15.47 floor level _____ type of locus FILL
 loci above L9336 loci below NONE YET sealed by _____

graphic description



final locus no. _____ arch. unit / logical area _____ stage (in sq.) _____ final STRATUM _____

Summary:

Description:

REASON FOR OPENING: CAME DOWN ON SECOND COURSE OF W9340 (ROBBED OUT ABOVE) IN L9336.

MATRIX: GREY SOIL WITH SOME PLASTER FRAGMENTS, MANY ROULS, MUCH POTTERY

DEFINITION/LIMITS: BOUNDED BY: W9340 TO S., W9147 TO E. LOCUS UNDER L9467 (UNNUMBERED) TO N, AND W. BULK

REASON FOR CLOSING: NOT EXCAVATED - END OF SEASON; not closed!

RELATIONS: L9492 IS COVERED BY L9336 (WASHED OUT DURING WINTER). L9492 APPEARS TO REACH W9147 & W9340 - RELATIONS

NEED MORE EXCAVATION TO CLARIFY. SEEMS TO BE THE SAME AS MATERIAL UNDER L9467 EXCEPT THAT IT IS COVERED BY FLOOR (AREA UNDER L9467 IS SEALED OVER CA. 1/3 OF ITS AREA) TINY PART OF FLOOR L9467 EXTENDS INTO L9492

section

photos

- reason for opening
- definition / limits
- reason for closing
- relation to other elements
- working photos, nos:
- publication photos
- architects permission

written by W. SWANSON checked by J. Zorn

