

TEL DOR

1989

field

G

square

A.K.34

phase (in area):

LOCUS L19.4.95

date opened

26/07/89

level

1569

date closed

27/07/89

level

1941

floor level

type of locus

ROCK FILL

loci above

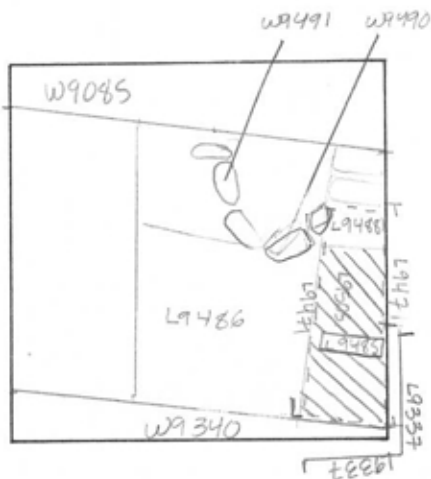
L9471

loci below

L9505

sealed by

graphic description



section

photos

- reason for opening
- definition / limits
- reason for closing
- relation to other elements
- working photos, nos:
- publication photos
- architects permission

written by W. SWANSON

checked by J. Zorn

final locus no.

arch. unit / logical area

stage (in sq.)

final STRATUM

Summary:

Description:

REASON FOR OPENING: ROCK FILL WAS REPLACED BY RICH ORANGE SOIL CONTAINING SOME KURKAR & MUD BRICK MATERIAL IN N. IN S. ROCK FILL CONTINUED DOWN AS L9485.

MATRIX: FIELDSTONES OF MIXED SIZES IN FINE DARK EARTH.

DEFINITION/LIMITS: BOUNDED ON E BY BAULK, ON S. BY W9340 ON W BY L9486 AND ON N. BY L9487.

REASON FOR CLOSING: ROCK FILL WAS REPLACED BY LOOSE DARK SOIL CONTAINING SOME MUD BRICK. L9487 AND L9485 WERE COLLAPSED INTO L9505.

RELATIONS: CONTINUATION OF ROCK FILL L9471 & L9337. REACHES W9340

W9340, CUTS L9485 & L9486; COVERS L9505  
L9485 MAY BE A ROBBER TRENCH OF W9510,  
ALONG WITH L9337, L9471, L9487 & L9505  
(ALSO MUD BRICK MATERIAL DIRECTLY OVER  
WALL), BECAUSE SOME UPPER COURSES OF W9510 SURVIVE  
BETWEEN THESE LOCI IN AK34 + AK33.

