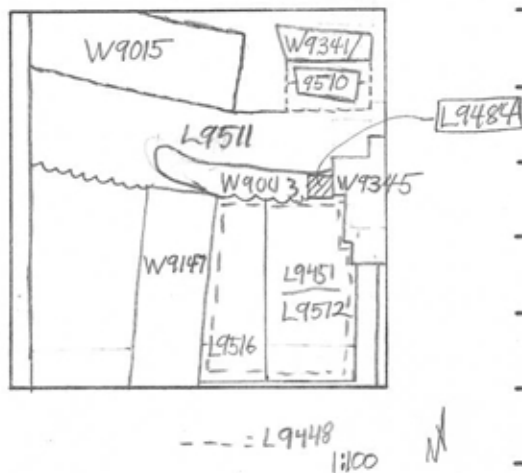


TEL DOR 1989 field G square AK33 phase (in area): 1 or later LOCUS L9484-
 date opened 26/07/89 level 1542 date closed 31/07/89 level 1506 floor level _____ type of locus
 Fragment of possible
 Rubber Trench.
 loci above W9003 loci below L9512 sealed by _____

graphic description



| final locus no. | arch. unit / logical area | stage (in sq.) | final STRATUM |
|-----------------|---------------------------|----------------|---------------|
|-----------------|---------------------------|----------------|---------------|

Summary:

Description: REASON FOR OPENING: FOUND compact red-brown COLOR SOIL
 BELOW SECTION OF [W9003].
 DEE./LIMITS: BOUNDED ON THE N&W BY [L9511], ON THE E BY [W9345]
 AND ON THE S BY [L9448] AND [L9451].

MATRIX: COMPACT, REDDISH BROWN SOIL, FEW SHEARDS.

REASON FOR CLOSING: COMPOSITION FOUND TO MATCH NEW LOCUS
 BELOW [L9451]. COLLAPSED INTO [L9512].

section

RELATION TO OTHER ELEMENTS: Covered by [W9003]; reached by
 [L9448]/[L9451]; probably cut by [L9511] ([W9003] above [9511]); relation to
 [W9345] uncertain. Part of the same rubber trench as [9451] + [9512]?

photos

- reason for opening
- definition / limits
- reason for closing
- relation to other elements
- working photos, nos:
- publication photos
- architects permission

written by R. Lethbridge checked by J. Zorn

IS 02: RT of W9003

