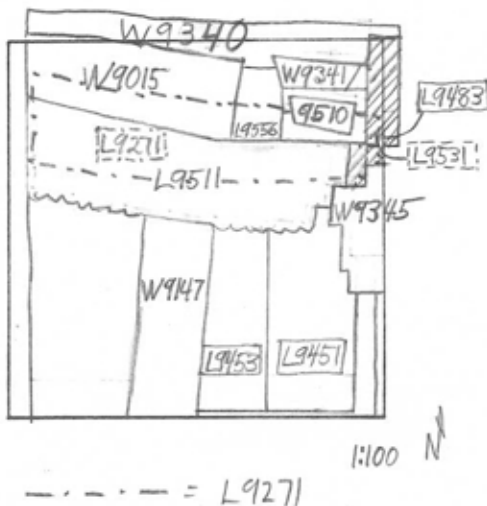


TEL DOR 1989 field G square AK33 phase (in area): 1 or later LOCUS L9483-  
 date opened 26/07/89 level 1590 date closed 04/08/89 level 1534 floor level \_\_\_\_\_ type of locus STRATIFIED ACCUMULATION  
 loci above L9238 loci below L9531 sealed by \_\_\_\_\_

graphic description



section

photos

- reason for opening
- definition / limits
- reason for closing
- relation to other elements
- working photos, nos:
- publication photos
- architects permission

written by R. Lettbridge checked by J. Zorn

final locus no. \_\_\_\_\_ arch. unit / logical area \_\_\_\_\_ stage (in sq.) \_\_\_\_\_ final STRATUM \_\_\_\_\_

Summary:

Description: REASON FOR OPENING: TO LEVEL AROUND [W9341/9510] to the level of [L9271] BY [W9340], ON THE E

DEF/LIMITS: BOUNDED ON THE N BY THE EDGES OF THE SQUARE, ON THE W BY [W9341/9510] AND [L9271], ON THE S BY [W9345].

MATRIX: GRAY, COMPACT SOIL WITH SHEARDS, SHELLS AND SOME TER-SERAE. DARK IDENTICAL TO SURFACE SOIL.

REASON FOR CLOSING: LEVELED TO 15.34 WHERE [W9510] DISCOVERED, also same level for [L9271]

RELATION TO OTHER ELEMENTS: [L9483] <sup>may</sup> REACH S [W9341/9510] AND [W9345]. It is above the level of disturbance [L9511], and its relation to the earlier material above [L9511], [L9271] is uncertain. [L9483] COVERS W9041.

IS'02:

For the most part - RT at 9015 etc.

