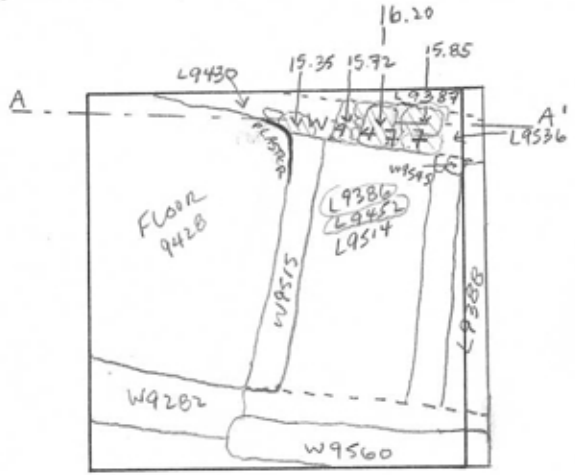


TEL DOR 19 89 field G square A6.34 phase (in area): LOCUS W19477
 date opened 14/07/89 level 1620 date closed 09/08/89 level 1535 floor level type of locus WALL
 loci above No? L9385 L9430 loci below sealed by
 No? L9416 L9536, L9533

graphic description



final locus no. arch. unit / logical area stage (in sq.) final STRATUM

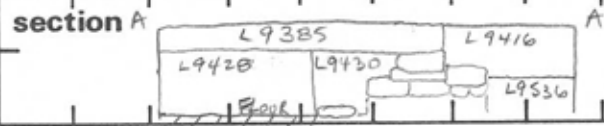
Summary:

Description: OPENED: UPON REACHING [W9477] BELOW [L9385], [L9430], [L9416]

DEFINITION / LIMITS: BOUNDED BY [L9387] ON THE NORTH, [L9514], [W9515] ON THE SOUTH

CLOSED: NOT CLOSED END OF SEASON
 MATRIX: ALTERNATING COURSES OF HEADERS AND STRETCHERS CA. 20M X .45M AND .30M X .50M TOGETHER WITH LARGE FIELD STONES RUNNING EAST TO WEST

RELATION TO OTHER ELEMENTS: [L9430] AND [L9536] REPRESENT ROBBER TRENCHES FOR [W9477] TO THE WEST AND EAST, RESPECTIVELY



photos

- reason for opening
- definition / limits
- reason for closing
- relation to other elements
- working photos, nos:
- publication photos
- architects permission

written by A.M. ABRAHAM checked by J. ZORN

[L9430] ROBBER TRENCH FOR [W9477] CUTS FLOOR [9428]; [L9386], [L9542] AND [L9514] REACH [W9477]; [L9388] REACHES [L9536], ROBBER TRENCH FOR [W9477]; [W9545] REACHES THE SOUTHERN FACE OF [W9477]; [W9515] REACHES [W9477] WITH PLASTER SECURING THE CORNER OF ROOM-FLOOR [9428] WHICH THEY ENCLOSE [W9477] APPARENTLY BELONGS TO THE SAME ROMAN PHASE AS [W9515], [W9545] AND THE ROMAN RE-USE

continued →

LOCUS

W 9477

BASKET LIST

basket no.	level	str def	cont	R ±	periods	comments
						RELATIONS CONTINUED OF [W9282], WHICH IS CONTEMPORARY WITH THE ROMAN BASEMENT TO THE WEST IN UNIT AH 34 (1988 SEASON)
						RELATION BETWEEN [L9536] AND [L9430], ROBBER TRENCHES FOR [W9477] IS NOT ENTIRELY CLEAR [L9536] YIELDED ONLY IRON AGE AND PERSIAN POTTERY WHILE [L9430] WAS MIXED ROMAN TO IRON AGE
						THE LOWEST PRESERVED STONE OF [W9477] WAS REACHED IN [L9430]
						IT IS POSSIBLE THAT [L9416] ALONE REPRESENTS THE ROBBER TRENCH FOR [W9477] AND THAT [L9536] REPRESENTS MATERIAL BELOW [W9477]