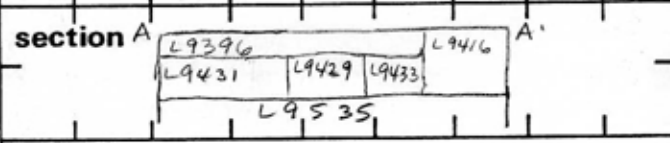
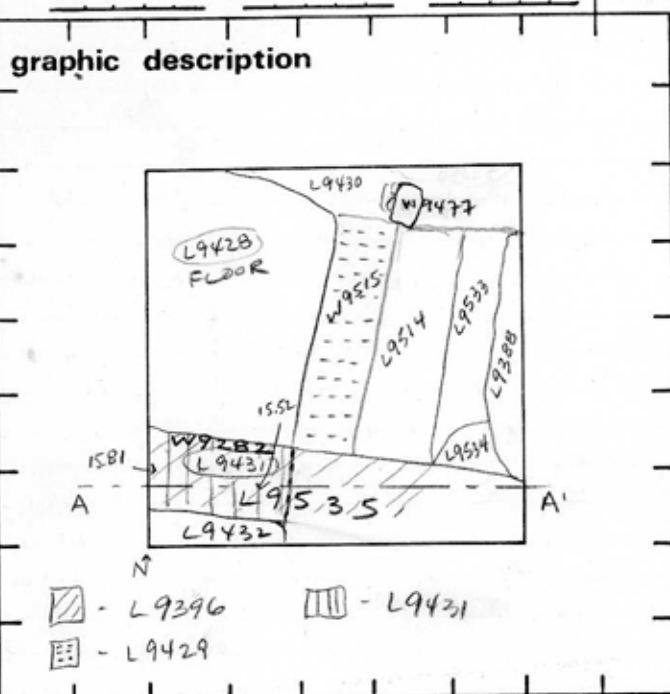


TEL DOR 19 89 field G square A.934 phase (in area): LOCUS 4943.1
 date opened 18/07/89 level 1597 date closed 02/08/89 level 1552 floor level _____ type of locus Robber TRENCH over W9282
 loci above L9396 loci below L9535 W9282 sealed by _____



photos

- reason for opening
- definition / limits
- reason for closing
- relation to other elements
- working photos, nos:
- publication photos
- architects permission

written by A.M. ARRANDES checked by J. Zorn

final locus no.	arch. unit / logical area	stage (in sq.)	final STRATUM
-----------------	---------------------------	----------------	---------------

Summary:

Description: OPENED: UPON REACHING POSSIBLE ROBBER TRENCH [L9429] BELOW [L9396]

DEFINITION / LIMITS: BOUNDED BY WEST BALK (L9432) TO THE SOUTH, [L9429] TO THE EAST, [L9428] TO THE NORTH

CLOSED: UPON REACHING PLASTER FACING OF [W9282] AND UPON ASSIGNING [L9535] AS ROBBER TRENCH OVER [W9282] FROM THE WEST TO THE EAST BALKS

MATRIX: MEDIUM-PACKED DARK BROWN SOIL WITH MANY ROCKS, FEW SHELLS, PLASTER FRAGMENTS, FEW TESSERAE, LIMESTONE

RELATION TO OTHER ELEMENTS: CUTS [L9428], [L9432] REACHES [L9429] TOP OF ROBBER TRENCH

MATERIAL OVER [W9515] [L9431] REVEALS PLASTER FACING OF [W9282]

* SEE ROBBER TRENCHES [L9226], [L9281] OVER [W9282] IN UNIT AH 34, 1988 SEASON

