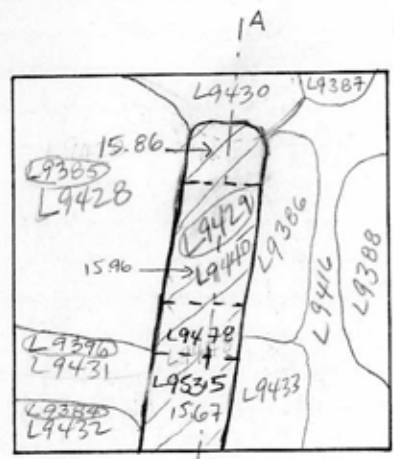


TEL DOR 1989 field G square A63.4 phase (in area): LOCUS L9429
 date opened 18/07/89 level 1615 date closed 19/07/89 level 1596 floor level _____ type of locus ROBBER TRENCH OVER W9515
 loci above L9385 L9396 loci below L9440 L9430 sealed by _____
 L9384 L9478 L9535

graphic description



DOTTED LINES INDICATE DIVISION OF LOCI BELOW L9429

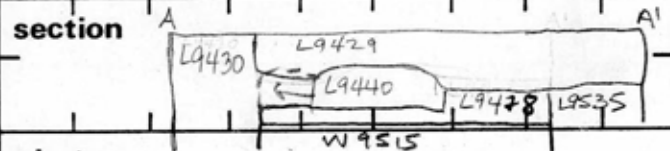
final locus no. arch. unit / logical area stage (in sq.) final STRATUM

Summary:

Description: OPENED: UPON REACHING SAME CHANGE IN SOIL BELOW [L9385], [L9396] AND [L9384].

DEFINITION/LIMITS: BOUNDED BY SOUTH BAULK, [L9430], [L9386], [L9433], [L9434], [L9431], [L9428]

CLOSED: UPON REACHING CHANGES IN SOIL: BLACK SOUTHWARD EXTENSION OF [L9430]; REDDISH BROWN WITH MANY SHELLS, [L9440]; RED WITH MANY LARGE ROCKS, [L9478]



MATRIX: MEDIUM-PACKED DARK BROWN SOIL WITH MANY ROCKS, FEW TESSERAE.

photos

- reason for opening
- definition / limits
- reason for closing
- relation to other elements
- working photos, nos:
- publication photos
- architects permission

written by A.M. ABRANTES checked by J. ZORN

RELATION TO OTHER ELEMENTS:
 OVERLIES [L9440], [L9478], [L9479]
 WHICH TOGETHER WITH [L9429] FORM SEPARATE FILLS WITHIN ROBBER TRENCH OVER [W9515]
 CUTS [L9428], [L9386], [L9431], [L9432], [L9433]
 OVERLIES [L9535], ROBBER TRENCH OVER W9282
 REACHES [L9430], ROBBER TRENCH OVER [W9477]

