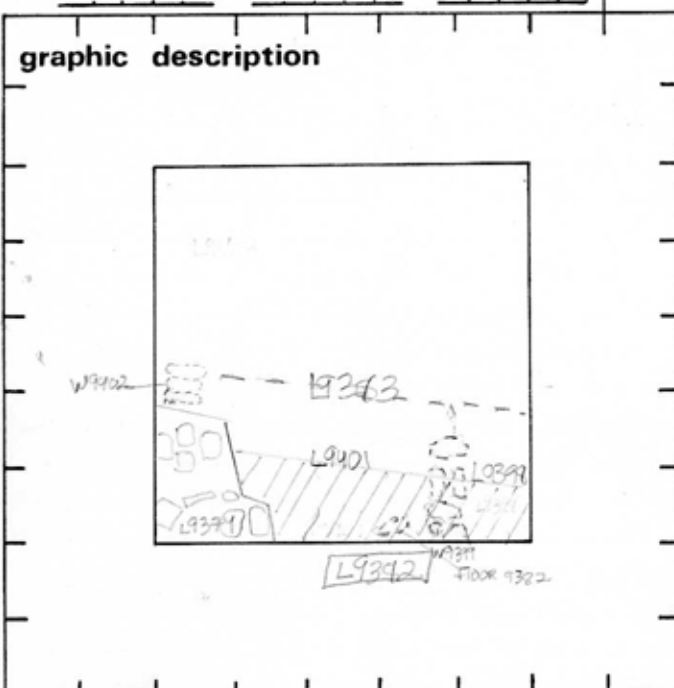


TEL DOR 1989 field G square KC 32 phase (in area): LOCUS L9392
 date opened 11/07/89 level 1699 date closed 11/07/89 level 1654 floor level 1658 type of locus FILL DOWN TO FLOOR
 loci above L9373 loci below L9398 L9401 sealed by _____



final locus no. _____ arch. unit / logical area _____ stage (in sq.) _____ final STRATUM _____

Summary: _____

Description: _____

REASON FOR OPENING: SOIL CHANGE TO KURKAR FILLED ORANGE SOIL, POSSIBLY A SUB-FLOOR FOR [L9374]. DARK SOIL TO N [L9373]

MATRIX: ORANGE KURKAR FILLED SOIL WITH PLASTER, SOME SHELL.

DEFINITION/LIMITS: BOUNDARIES ON E-S BY BANKS, ON W BY [L9374], ON N BY [L9373]

REASON FOR CLOSING: (CAME DOWN) ON [L9392] AND PARTIAL OF KURKAR FLOOR 9392 DIRECTLY BENEATH FLOOR 9373

section _____

RELATIONS: [L9392] IS CUT BY [L9373] ON NORTH. [L9374] WAS POSSIBLY BUILT ON TOP OF [L9392], AND LATER ROBBED OUT. FLOOR 9373

photos

- reason for opening
- definition / limits
- reason for closing
- relation to other elements
- working photos, nos:
- publication photos
- architects permission

written by W. SWANSON checked by J. Zorn

IS DIRECTLY ABOVE FLOOR 9392. [L9392] IS NOT SEaled BY FLOOR 9373, TOO SMALL. ONLY EXCAVATION OF [L9374] CAN CLARIFY RELATION OF [L9392] TO [L9374].

