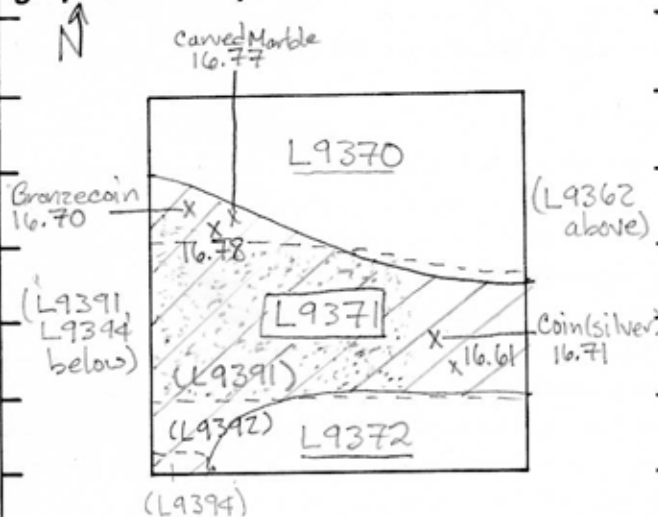


TEL DOR 19 89 field G square AE32 phase (in area): LOCUS L9371

date opened 11/07/89 level 16.84-16.68 date closed 13/07/89 level 16.78-16.61 floor level 16.73-16.61 type of locus MAKEUP OF SURFACE (FLOOR) + FILL DOWN TO SURFACE (FLOOR)

loci above 9362 loci below 9389, 9390, 9391, 9394, 9392 sealed by

graphic description



final locus no.	arch. unit / logical area	stage (in sq.)	final STRATUM
-----------------	---------------------------	----------------	---------------

Summary:

Description: REASON FOR OPENING: CAME DOWN ON KURKAR/CONCRETE SURFACE (FLOOR) ABOVE IT IN L9362.

DEF./LIMITS: L9371 EXTENDS TO THE WEST, EAST AND SOUTH Baulks. TO THE NORTH IT BORDERS FILL L9370 AND TO THE SOUTH FILL L9372.

MATRIX: CRUSHED KURKAR AND CONCRETE MATERIAL FROM SURFACE IN L9362. FILL DOWN TO FLOOR IS BROWN SOIL WITH LOTS OF KURKAR.

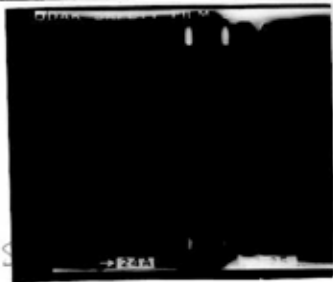
REASON FOR CLOSING: CAME DOWN ON SECOND KURKAR SURFACE (FLOOR?) IN CENTER OF L9371 AND A POSSIBLE WALL IN SOUTH WEST OF LOCUS. TWO NEW LOCI OPENED (L9391, L9394).

RELATIONS: L9371 IS DIRECTLY BELOW TOPSOIL L9362 AND ITS

section

photos

- reason for opening
- definition / limits
- reason for closing
- relation to other elements
- working photos, nos: 98328
- publication photos
- architects permission



written by Laura Millh checked by J. Zorn

KURKAR SURFACE (FLOOR?). IT IS DIRECTLY ABOVE L9391 WHICH CONTAINS KURKAR MAKEUP + FILL TO FLOOR (POTTERY SURFACE); FILL L9392 AS WELL AS THE POSSIBLE WALL L9394. L9371 IS CUT BY FILL L9370 TO THE NORTH AND FILL L9372 TO THE SOUTH. THE NORTHWEST SECTION OF L9371 COVERS PART OF THE PILE OF STONES IN L9389. THIS SECOND KURKAR SURFACE MIGHT BE THE SUBFLOOR FOR THE PAVEMENT STONES WHICH MAY HAVE EXTENDED TO THIS AREA BUT WAS SUBSEQUENTLY ROBBED OUT. L9371 IS POSSIBLY DISTURBED IF THIS IS TRUE. [CONT.]

