

**TEL DOR** 1989 field G square AC 32 phase (in area): LOCUS 119.3.63  
 date opened 07/07/89 level 1729 date closed 11/07/89 level 1696 floor level \_\_\_\_\_ type of locus TOPSOIL  
 loci above \_\_\_\_\_ loci below L9373 L9374 sealed by \_\_\_\_\_

graphic description	final locus no.	arch. unit / logical area	stage (in sq.)	final STRATUM
---------------------	-----------------	---------------------------	----------------	---------------

**Summary:**

**Description:**

**REASON FOR OPENING:** TO BEGIN EXCAVATION OF AC 32. AC 32 WAS OPENED TO FIND CONTINUATION, END OR CHANGE IN DIRECTION OF [W19096] POSSIBLY [W2463] (THE BROTHER OF BLOB).

**MATRIX:** DARK SURFACE SOIL CONTAINING MANY ONIONS, POTTERY, SOME TESSERAE, SOME MARBLE-FACING IN SOUTHERN PORTION OF SQUARE.

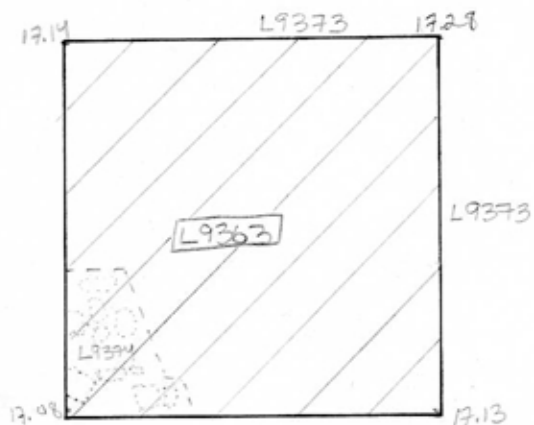
**DEFINITION/LIMITS:** EXTENDS TO ALL BULKES.

**REASON FOR CLOSING:** CAME DOWN ON [L9374] POSSIBLY PAVING STONES.

**RELATIONS:** [L9363] IS DISTURBED SURFACE MATERIAL ABOVE

DISTURBED ASHLARS AND OTHER DISTURBED MATERIAL.

graphic description



section

photos

- reason for opening
- definition / limits
- reason for closing
- relation to other elements
- working photos, nos:
- publication photos
- architects permission

written by W.S. JANSON checked by J. Zorn

