





phase (in area):

CARD 2

LOCUS L19.3.3.7

TEL DOR

1989

field

G

square

A.K.3.4

date opened

08/04/89

level

1592

date closed

24/07/89

level

1567

floor level

type of locus

STONE FILL

loci above

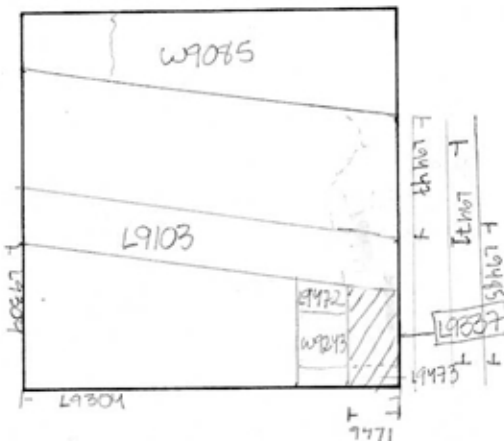
L9.3.0.4 E.B.&L.K.

loci below

L9471 L9473

sealed by

graphic description



section

photos

- reason for opening
- definition / limits
- reason for closing
- relation to other elements
- working photos, nos:
- publication photos
- architects permission

written by V. SWANSONchecked by J. Zorn

final locus no.

arch. unit / logical area

stage (in sq.)

final STRATUM

Summary:

Description:

REASON FOR OPENING: EXCAVATION REVEALED W9243

MATRIX: ROCKS, SOME DARK ORANGE-BROWN SOIL.

DEFINITION/LIMITS: BOUNDED ON N. BY DRAIN L9103, ON W BY W9243 & L9472, ON E AND S. BY B.L.K.S.REASON FOR CLOSING: CAME DOWN ON ROBBER TRENCH L9473 ON S END AND COULD REED REMAINDER OF L9337, AREA UNDER DRAIN L9103, PART OF L9447 AND L9437 INTO L9471 - ALSO A STONE FILL LOCUS.RELATIONS: COVERS L9473 & ROBBER TRENCH. IS PART OF SAME ROCK FILL AS L9447, L9471 AND L9475. IS CUT BY DRAIN L9103 ON N. IS CUT BY W9243 AND L9472 TO SOUTH. COVERED BY L9304.

