

TEL DOR

1988

field

G

square

AK.3.4

phase (in area):

CARD

LOCUS

49.329

date opened

05/08/88

level

16.08

date closed

12/00/88

level

15.83

floor level

type of locus

Robber trench

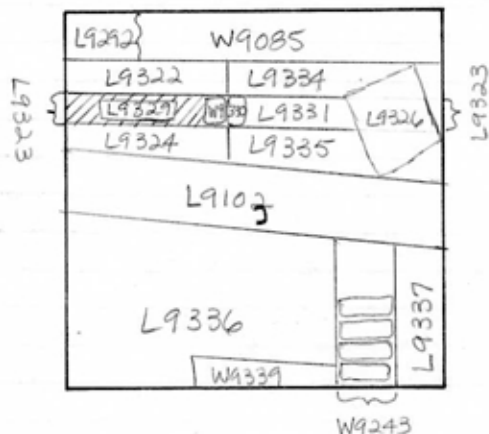
loci above

L9.3.23

loci below

sealed by

graphic description



section

photos

- reason for opening
- definition / limits
- reason for closing
- relation to other elements
- working photos, nos:
- publication photos
- architects permission

written by A. Capelchecked by J. Zorn

final locus no.

arch. unit / logical area

stage (in sq.)

final STRATUM

Summary:

Description:

Reason for Opening: Excavation in robber trench [L9323] revealed [W9330]

Definition / Limits: [L329] is bounded to the N by [L9322], to the S by [L9324], to the E by [W9330], & to the W by the W bank.

Reason for Closing: Not Closed — End of Season

Relation to Other Elements: [L9323] lies immediately above [L9329]. [L9329] cuts [L9322] to the N, [L9324] to the S, & [W9330] to the E. [L9329] extends into the W bank.

Matrix: [L9329] consists of medium brown soil (unlike the very dark matrix of [L9323]), loosely packed, though not so fine as that of [L9323]. The matrix of [L9329] is looser & finer, & contains fewer rocks than that of [L9331].



TEL DOR

1989

field

G

square

A.K.3.9

phase (in area):

CARD 2

LOCUS 119.3.2.9.

date opened

level

date closed

level

floor level

type of locus

05/08/89

16.08

20/07/99

15.67

ROBBER TRENCH

loci above

193.23

loci below

19.467

sealed by

graphic description

final locus no.

arch. unit / logical area

stage (in sq.)

final STRATUM

Summary:

Description:

REASON FOR OPENING: GEXCAVATION IN ROBBER TRENCH [19330] REVEALED [W9330]

DEFINITION/LIMITS: BOUNDED ON N BY [19322] ON S BY [19324] ON E BY [W9330] ON W BY BANK

MATRIX: DARK GRAY SOIL, LOOSLY PACKED, FEW ROCKS

REASON FOR CLOSING: RECENTLY UNIFORM GRAY MATERIAL CONTAINING SOME ASH BENEATH [19322] [19329] AND [19324] COLLAPSED INTO [19467]

RELATIONS: COVERED BY [19323], ALSO PART OF ROBBER TRENCH.

CUTS [19322] AND [19324]; IS IN ROBBER TRENCH OF [W9330]; COVERS [19467].

section

photos

- reason for opening
- definition / limits
- reason for closing
- relation to other elements
- working photos, nos:
- publication photos
- architects permission

written by W. SWANSONchecked by J. Zorn