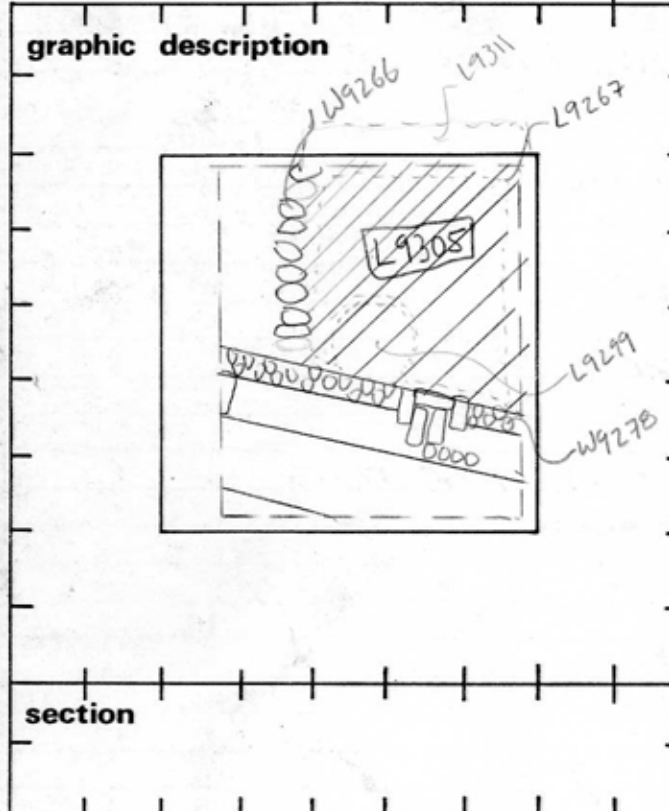


TEL DOR 1988 field G square A.H.3.3 phase (in area): LOCUS L19305

date opened 28/07/88 level L518 date closed 01/08/88 level L426 floor level _____ type of locus FILL

loci above L9299 L9267 loci below L9630 sealed by _____



final locus no. _____ arch. unit / logical area _____ stage (in sq.) _____ final STRATUM _____

Summary: _____

Description: REASON FOR OPENING: COLLAPSED [L9299] AND [L9267] WHEAL SOIL AND MATERIALS WERE INDISTINGUISHABLE.

DEFINITION AND LIMITS: EXTENDS NORTH FROM [W9278] AND EAST FROM [W9266] INTO THE NORTH AND EAST BAULK.

MATRIX: LIGHT BROWN SOIL WITH MUCH ASH AND POTTERY, AND BONE.

FINDS: NUMEROUS SEMI-INTACT POTTERY VESSELS, A FEMALE FIGURINE.

REASON FOR CLOSING: END OF SEASON, NOT CLOSED.

RELATION TO OTHER ELEMENTS: COVERED BY [L9299] AND [L9267].

REACHES [L9266], CUT BY [W9278], THOUGH IT IS SEPARATED FROM THE WALL BY WHAT IS PROBABLY FOUNDATION TRENCH MATERIAL FROM [W9278]. REACHES [W9266]. SIMILAR SOIL IS PRESENT IN [L9311], IN SQUARE AH 34. [L9311] comes down on a very scrappy packed earth floor, the pottery to be reconstructed may be from this same floor, though the floor, as such, was not found in AH 33.

- photos**
- reason for opening
 - definition / limits
 - reason for closing
 - relation to other elements
 - working photos, nos:
 - publication photos
 - architects permission
- written by R. Lindstrom checked by J. Zorn

* WENT TARP '91 SEASON - CLB

fl 9305 = 9311 = 9611 = 9706 = 9710 = 9711

