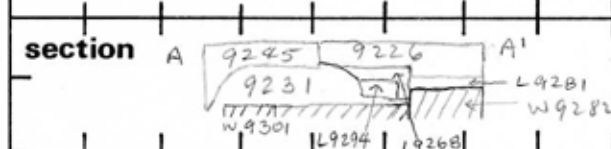
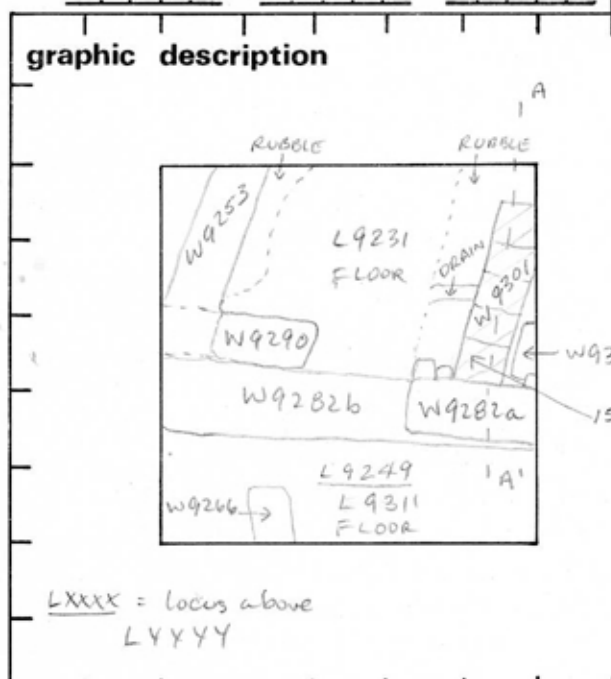


TEL DOR 19 88 field G square A.H.3.4 phase (in area): _____ LOCUS W9301 (CARD 1 OF 2)

date opened 27/07/88 level 1531 date closed 12/08/88 level _____ floor level _____ type of locus WALL

loci above L9231 loci below _____ sealed by _____



photos

- reason for opening
- definition / limits
- reason for closing
- relation to other elements
- working photos, nos:
- publication photos
- architects permission

written by A.M. ABRALDES checked by J. Zorn

final locus no.	arch. unit / logical area	stage (in sq.)	final STRATUM

Summary:

Description: OPENED: UPON REACHING N-S ASHLAR WALL [W9301] BELOW [L9231]

DEFINITION / LIMITS: BOUNDED ON THE NORTH BY FILL BELOW [L9231], ON THE WEST BY RUBBLE AND PLASTER DRAIN BETWEEN [W9301] AND FLOOR OF [L9231]; ON THE SOUTH BY [W9282a]; ON THE EAST BY FILL BETWEEN [W9301] AND [W9306]; AT THE NORTHEAST BY EAST BAULK

MATRIX: [W9301] IS COMPOSED OF ASHLARS, ca. 50 m wide .60 m. LONG

CLOSED: END OF SEASON, not closed

RELATION TO OTHER ELEMENTS: [W9301] PARALLEL TO [W9306] FROM WHICH IT IS SEPARATED BY .10 m of hard clay material similar to that on top of W9301

ABUTS [W9282a], PLASTER DRAIN (REACHES [W9301]) AT THE EAST AND REACHES FLOOR OF [L9231] AT THE WEST. FLOOR [L9231] IS CUT ca. .45 m. FROM THE WESTERN FACE OF [W9301], WITH RUBBLE FILLING THE SPACE BETWEEN FLOOR AND [W9301]. NORTHERN LIMIT OF [W9301] IS ca. .30 m FROM N BAULK. [L9245] APPEARS TO BE RUBBER TRENCH OVER MISSING N LIMIT OF [W9301]

Locus W 9301	Dor 19 ⁹⁷	Fld G ₁	Sq A1H34	Loc. type (CARD 2 OF 2) WALL
Open Date 017/07/97	High at 115.34 N	Low at 115.30 C ₁	Seals: 18227	Sealed by:
Close 115/07/97	115.17 N	115.13 S ₁	Loci SEE 1988 SEASON LOCUS CARD	above
Floor: type	Length 2.6	Width 0.5	Vol	below
Value S ₁	Remove	Drawn? YES	Photo #(1) SEE PREVIOUS CARD	Photo #(2) SEE PREVIOUS CARD
Written by: M.A.S	Checked by: J.R.Z	Loci 18227	Loci	
Unit	Phase	Stage	Stratum	PoM

Summary

Opened: SEE 1988 LOCUS CARD.

Limits (N) SEE 1988 LOCUS CARD

(S) See 1988 Locus Card

(E) L18204

(W) L18202

Closed: IN ORDER TO SEE THE RELATIONSHIP BETWEEN W9301 AND L18204. ALSO IT WAS FLOATING.

Matrix: SEE 1988 LOCUS CARD.

Relations: SEE 1988 LOCUS CARD. ALSO:

E: W9301 IS REACHED BY L18204, but not by L18211 immediately below L18204

W: W9301 IS REACHED BY L18202.

LOCUS BELOW: W9301 SEALS L18227.

POSSIBLY W9301 WAS ROBBED TO THE NORTH AS W9301 SEEMS TO CONTINUE INTO THE BALK AS A SIMILARLY SHAPED ASHLAR APPEARS ON THE SAME LINE in the bulk

* W9301 abuts W9282

W9306 is laid against W9301

W9301 = W18206 = W18248 All the same wall; construction method: on stone foundation is placed alternate layers of handbrick (10-15 cm thick) and ashlar (1 course) Installation L18245 (consists of plaster drain and cement container) was built into the wall (= the Sq-called gate) This wall W9301 (+18206 + 18248) abuts W9282 and reached by floor 9231

Additional Observations/Value: HIGH VALUE ROMAN WALL.

Locus

W 19301

Sketch plan



Photo

Photo

Section

Section

▨ = W19301

.... = POSSIBLE CONTINUATION OF W19301

▨ = L18204

▨ = POSSIBLE ASHLAR IN BALK CONNECTED WITH W19301