

TEL DOR

1988

field

A

square

AK.3.4

phase (in area):

LOCUS L9292

date opened

26/07/88

level

L6.50

date closed

27/07/88

level

L6.24

floor level

type of locus

Fill below topsoil

loci above

L9.221

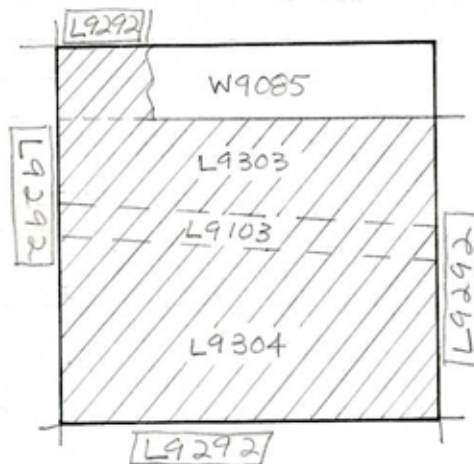
loci below

L9.303

L9.103

sealed by

graphic description



final locus no.

arch. unit / logical area

stage (in sq.)

final STRATUM

Summary:

Description:

Reason for Opening: Reopened square previously excavated to level of [W9085] earlier this season.

Definition / Limits: [L9292] is bounded to the N by [W9085], and by the E, S, & W baulks.

Reason for Closing: Came down on drain [L9103]

Relation to Other Elements: [L9292] is cut by [W9085] to the N. Directly above [L9292] is [L9221], the topsoil locus. Drain [L9103] lies below [L9292] in an approximate E-W line. [L9303] lies below [L9292] to the N of [L9103]. [L9304] lies below [L9292] to the S of [L9103].

Matrix: Fine, loose, sandy brown soil containing numerous rocks, tesserae (1/8 bucket), & roofing tiles (1/4 bucket).

section

photos

- reason for opening
- definition / limits
- reason for closing
- relation to other elements
- working photos, nos:
- publication photos
- architects permission

written by A. Capelchecked by J. Zorn

