

TEL DOR

1988

field

G

square

A.H.3.3

phase (in area):

LOCUS L19284

date opened

21/07/88

level

L584

date closed

21/07/88

level

L546

floor level

type of locus

FOUNDA^{POSSIBLE}TRENCH?

loci above

W9264

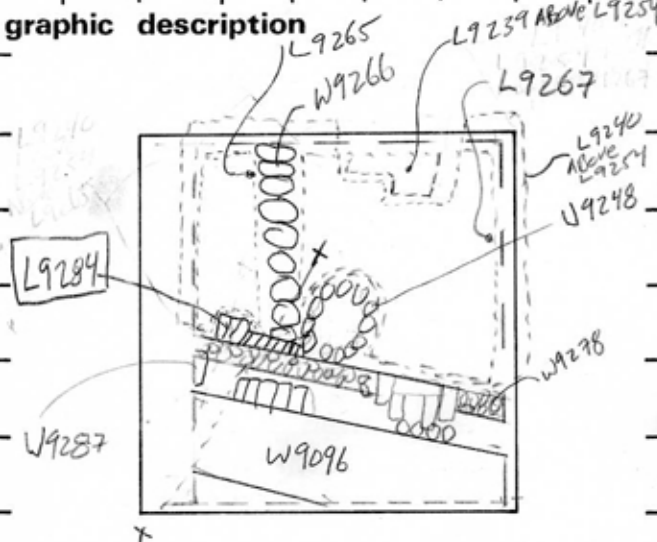
loci below

W9278?

sealed by

W9264

graphic description



final locus no.

arch. unit / logical area

stage (in sq.)

final STRATUM

Summary:

Description:

REASON FOR OPENING: WALL 9264 WAS REMOVED, AREA BELOW BECAME L9284.

DEFINITION/LIMITS: AREA IMMEDIATELY BELOW REMOVED WALL 9064.

MATRIX: HARD CLAYLIKE SOIL WITH KURKAR FLAKES.*

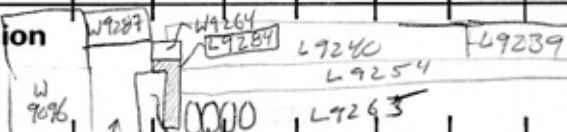
REASON FOR CLOSING: CAME DOWN ON W9266.

RELATION TO OTHER ELEMENTS: REACHES W9278. CUT BY W9248. CUTS W9266, SEPARATING IT FROM W9278.

W9264 FLOATS ON L9284. CUTS L9265. CUTS L9240 AND L9254 AND L9265 AND L9267.

IDENTICAL MATERIAL TO L9284 ADHERES TO ENTIRE NORTH FACE OF WALL 9278, PROBABLY IT IS A FOUNDATION TRENCH FOR W9278.

section



photos

unknown W9266
W9278

- reason for opening
- definition / limits
- reason for closing
- relation to other elements
- working photos, nos:
- publication photos
- architects permission

written by P. LINDSTROM

checked by J. Zorn

* OTHER SURROUNDING SOILS ARE LIGHTER AND SANDIER THAN THE HARD MATERIAL ALONG W9278.

