

TEL DOR

1988

field

G

square

AH34

phase (in area):

LOCUS

CARD 1 OF 6
W19282^{a+b}

date opened

21/07/88

level

1592

date closed

12/08/88

level

1531

floor level

type of locus

WALL

loci above

a-L9281 b-L9252

loci below

sealed by

graphic description

final locus no.

arch. unit / logical area

stage (in sq.)

final STRATUM

Summary:

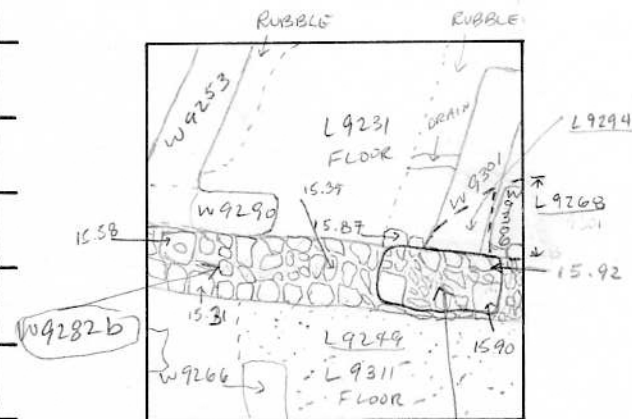
Description:

OPENED: UPON REACHING [W9282a] BELOW [L9281] AND [W9282b] BELOW [L9252].

DEFINITION/LIMITS: BOUNDED ON THE SOUTH BY [L9249], [L9311]; BY THE WEST AND EAST BAULK, ON THE NORTHWEST BY [W9290], ON THE NORTHEAST BY [W9301] ON THE NORTH BY FLOOR OF [L9231]

MATRIX: ROUGH-CUT STONES AND FIST-SIZED FIELDSTONES WITH HARD RED CLAY PACKING; [W9282a] BUILT OVER [W9282b] AT THE EAST, CA. 25 m FROM THE EAST BAULK AND CA 2.30 m FROM THE WEST BAULK,

BETWEEN BOTTOM OF [W9282a] AND TOP OF [W9282b] IS A CA. 0.20 m BEDDING OF HARD RED CLAY CONTAINING

POTTERY AND SMALL ROCKS. [W9282b] PROJECTS CA .10 m FROM S FACE OF [W9282a].
ROUGH SQUARED BLOCK WITH HOLE BORED THROUGH.

LXXXX = locus above L4444

section

photos

- reason for opening
- definition / limits
- reason for closing
- relation to other elements
- working photos, nos:
- publication photos
- architects permission

written by AM ABRADES checked by J. Zorn

CLOSED: END OF SEASON - NOT CLOSED

RELATION TO OTHER ELEMENTS:

DISTINCT LINE SEPARATING ROBBER TRENCH [L9281] OVER [W9282a] AND ROBBER TRENCH [L9252] OVER [W9282b].

[L9249] AND [L9311] REACH [W9282b].

FLOOR OF [L9311] REACHES [W9282b] EAST OF LINE OF [W9266].

[W9290] ABUTS [W9282b]

[W9301] ABUTS [W9282a]

CONTINUED ON BACK.

TEL DOR

19 89

field

G

square

AG.34

phase (in area):

LOCUS

CARD 2 OF 6
W9282

date opened

31/07/89

level

1575

date closed

09/08/89

level

1527

floor level

type of locus

WALL

loci above

L9431 L9535

loci below

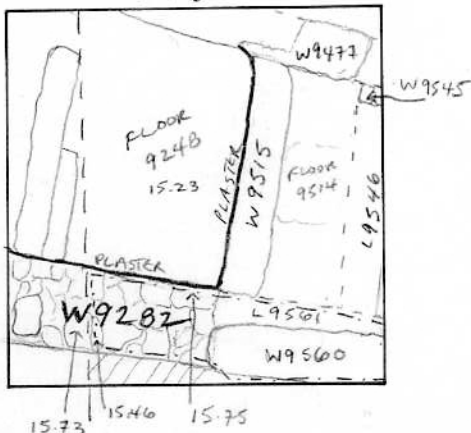
None yet

sealed by

graphic description

Baults

A#34 | AG 34



▨ = L9432, L9555
 - - - = L9535

section

final locus no.

arch. unit / logical area

stage (in sq.)

final STRATUM

Summary:

Description: OPENED: UPON REACHING W9282
 BELOW ROBBED TRENCHES L9431, L9535

DEFINITION: LIMITS: BOUNDED BY WEST BAULK
 L9432, L9555 TO THE SOUTH; L9501 TO
 THE EAST, W9560 TO THE EAST, L9245 TO NORTH.

CLOSED: NOT CLOSED, END OF SEASON

MATRIX: ROUGH SMALL TO MEDIUM-SIZED FIELD
 STONES AND A FEW SMALL ASHLARS;

PLASTER FACING ON NORTH FACE OF W9282
 PRESERVED CA. .30 M ABOVE STONES OF W9282
 STONES RANGE IN SIZE FROM CA. .30M X .40M TO CA. .10M X .15M

RELATION TO OTHER ELEMENTS:

REACHED BY FLOOR 924B WHICH
 IS PLASTERED AGAINST W9282

W9560 WHICH IS APPARENTLY PERSIAN
 IS BUILT ON TOP OF THE EASTERN
 LIMIT OF W9282 AT A SLIGHTLY
 DIFFERENT ORIENTATION

PLASTER FACING OF W9282 REACHES
 W9515

photos

- reason for opening
- definition / limits
- reason for closing
- relation to other elements
- working photos, nos:
- publication photos
- architects permission

written by A.M. ABRAMS checked by J. Zorn

CONTINUED →

Locus W 9282	Dor 19 9.1	Fld 6	Sq AI, 34	Loc. type Wall			
Open	Date 24/07/91	High at 1.5	at 4.6	Low at 1.5	at 4.0	SE	Seals: _____
Close	8/08/91	_____	_____	_____	_____	_____	Sealed by: _____
Floor:	type _____	_____	_____	_____	_____	_____	Loci 9697
Length	0.8	Width	0.6	Vol	_____	_____	above _____
Value	11	Remove	1/1	Drawn?	YES	_____	below _____
Photo #(1)	_____	Photo #(2)	_____	_____	_____	_____	_____
Written by:	EAL	Checked by:	JRIZ	_____	_____	_____	_____

Unit	Phase	Stage	Stratum	PoM
------	-------	-------	---------	-----

Summary

Opened: Opened W9282 when L9697 came down upon top of wall that continues into AH34
L9697 became W9282, L9700, L9701

Limits (N) 9618

(S) 9700

(E) Wall continues into AH34

(W) 9681

Closed: End of Season, Not closed

Matrix: Wall composed of squarish stones ranging from fist to head-sized surrounded by hand-packed dark earth. L9697's soil was dry and coarse with few indicators. 9618's soil is light colored with many shreds and rocks, similar to fill. L9700 is hand packed mudbrick with almost no shreds

Relations: L9697 above W9282 was basically a clearing locus to begin to excavate the western edge of AI34. L9697 became W9282, L9700, L9701. Have not removed W9282. North of W9282 is L9618 which was similar to fill material and may be a robber trench robbing a NS wall that makes a corner with W9282. East, AH34 shared W9282 with AI34. L9700 reaches W9282 at the south. ^{L9700 is} sherdless, hand packed mudbrick which is very different from W9282's stones or the pit material in L9681. W9282 stops abruptly at the edge of AI34, cut by pit L9681 at the western end of the wall. Only the top course of W9282 was revealed at the end of the '91 season. The area adjacent to W9282 should be excavated to discover more completely the walls relations in AI34.

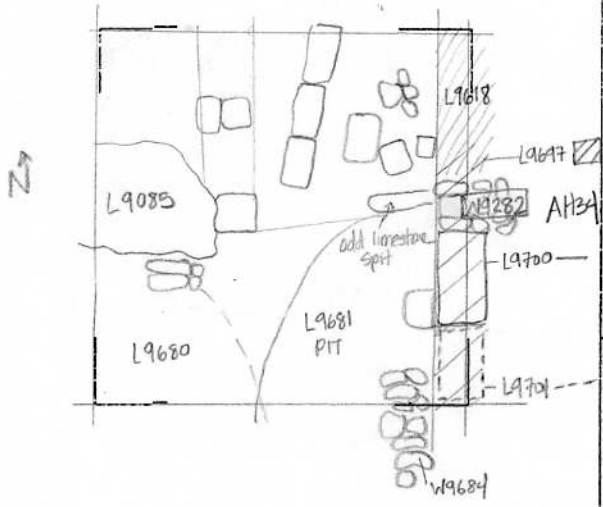
An odd spit of concrete or limestone (.42m x .13m) extends from the western edge of W9282 where W9282 is cut by pit 9681.

W9282 may cut L9700. W9282 in AH34 is reused as a wall in a Roman basement. Its original period is uncertain. L9700 seems to be Iron Age. It seems difficult to believe that W9282 is earlier than that mudbrick. Only dismantling the wall may provide the answer.

Additional Observations/Value: _____

LOCUS
W/ 9,2,8,2

Sketch plan



Sec
|
|
|
|
|
|
|
|
|
|

Devised AH34 w Cheryl

CARD 3 OF 6

(entered)

Locus W 9282	Dor 19 92	Fld G	Sq AH34/AH34	Loc. type WALL (CONTINUATION)
Open 17/07/92	High 15.46	at N	Low 15.40	at S
Close 30/07/92	High 15.13	at W	Low 14.63	at E
Floor: type				
Length	Width		Vol	
Value	Remove		Drawn?	
Photo #(1) END OF SEASON	Photo #(2)			Seals:
Written by: SFB	Checked by: JRJ			Sealed by:
				Locl
				above
				Locl
				below

Unit	Phase	Stage	Stratum	PoM
Summary				

Opened: CONTINUED DOWN SOUTH FACE OF W9282 IN 1992 SEASON.

Limits (N) NOT EXCAVATED
(S) L9769, L9771, L9811
(E) CONTINUES INTO EAST PART OF AH34 & BEYOND
(W) UPPER (2) COURSES PREVIOUSLY EXCAVATED, LOWER COURSES UNEXCAVATED

Closed: W9282 WAS CLOSED IN THIS AREA WHEN L9811 REACHED THE BOTTOM LEVEL OF ITS LOWEST COURSE. Not removed

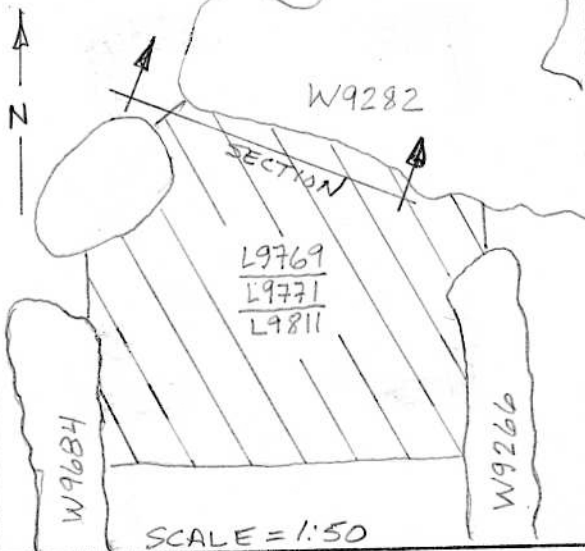
Matrix: UPPER (2) COURSES OF W9282 IN THIS AREA (CORRESPONDING TO W9282b ON CARD FOR W9282 OF 1988) CONSISTS OF ROUGHLY SQUARED-OFF FIELD STONES VARYING GREATLY IN SIZE. THE UPPER STONE IN S.W. CORNER OF WALL MEASURING APPROX. 0.5 x 0.5 x 0.25

Relations: ABOVE: PREVIOUSLY EXCAVATED. BELOW: NOT EXCAVATED
 NORTH: NOT EXCAVATED. WEST: UPPER (2) COURSES PREVIOUSLY EXCAVATED; LOWER COURSES, UNEXCAVATED. SOUTH: THE LOWER COURSES OF W9282 SEEM TO CUT L9769, L9771, AND THE UPPER PART OF L9811. WE WERE UNABLE TO LOCATE DIRECT OR INDIRECT (POTTERY) EVIDENCE OF A FOUNDATION TRENCH IN THIS AREA. LOWER 2 COURSES OF W9282 MAY BE AS EARLY AS LATE IRON AGE. EAST & W9282 CONTINUES INTO EAST PART OF SQUARE AH34.

⊕ OTHERS RANGING DOWN TO ONLY ABOUT 10 CM ACROSS. BELOW THESE IS A THIRD COURSE OF SIMILAR CONSTRUCTION BUT IT EXTENDS ABOUT 80 CM LESS TO THE WEST. BELOW THESE ARE 2 COURSES OF ROUGH FIELD STONES VARYING IN DIMENSION FROM ABOUT 30 TO 15 CM.

Additional Observations/Value: W9282 IS A (3) OR POSSIBLY (4) PHASE WALL REACHING DOWN INTO IRON AGE MATERIAL END IN USE DURING ROMAN PERIOD. IN DETAIL STUDY

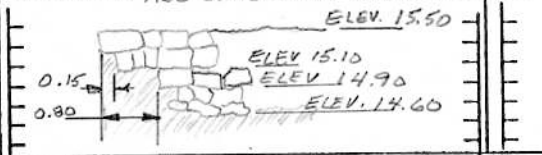
Sketch plan



Photo

Section

NOT TO SCALE
ALL DIMENSIONS APPROXIMATE



FROM SOUTH

Locus W 9282	Dor 19 93	Fld G1	Sq A933	Loc. type WALL CARD	<i>Entered</i>
Open Date 02/07/93 Close 04/08/93 Floor: NIA type Length 0.55m Value i	High at 1.575 W 1.988 W 1.1	Low at 1.546 E 1.956 E 1.1	Vol []	Seals: NEEDS FURTHER EXCAVATION Sealed by:	_____
Photo #(1) 102069	Photo #(2) 102070	Locl above	Locl below	SEE PREVIOUS SEASONS' CARDS AND PARTLY UNEXCAVATED	_____
Written by: GISE	Checked by: JRI				

Unit	Phase	Stage	Stratum	PoM
------	-------	-------	---------	-----

Summary

Opened: AT BEGINNING OF SEASON

Limits (N) SEE PREVIOUS SEASONS' CARDS.

(S) CLEANING LOCUS L9854, L9862, L9889, L9932, L9944, L9972 AND L9962

(E) SEE PREVIOUS SEASONS' CARDS.

(W) SEE PREVIOUS SEASONS' CARDS.

Closed: NOT CLOSED; END OF SEASON.

Matrix: SEE PREVIOUS SEASONS' CARDS. [W9282] IS NOW 6 COURSES HIGH AND IS FLOATING AT THE E. IT IS PROBABLY FLOATING TO THE W OF W9867, BUT THE W BULK MUST BE REMOVED TO BE CERTAIN.

Relations:

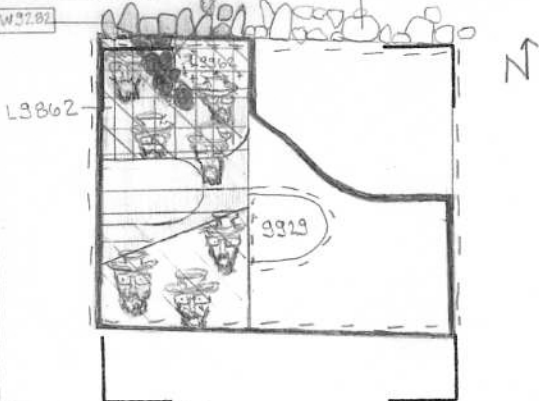
- CLEANING LOCUS L9854 REACHES [W9282].
- [W9282] CUTS L9862, F/L 9889 (FOUNDATION TRENCH VISIBLE), F/L 9932, F/L 9944, L9972 AND F/L 9962. [W9282] FLOATS AT THE LEVEL OF W9957, F9962 and possibly above possible F9972 (between 9282 and W bulk).
- W9967 CONTINUES BELOW [W9282] AND IS THEREFORE EARLIER.

NOTE: THE 1992 CARD FOR [W9282] WAS LOST. GATHERING FROM THE DAYBOOK OF THE 1992 EXCAVATOR (STEPHANIE ROSE), [W9282] WAS MOSTLY IN THE N BULK. (THE N BULK WAS TAKEN DOWN) AUG 7, 1992 AND [W9282] WAS EXPOSED.

THE RELATIONSHIP BETWEEN [W9282] AND PREVIOUS LOCI (UNCERTAIN AS [W9282] WERE IN THE BULK.

Additional Observations/Value: SEE PREVIOUS SEASONS' CARDS.

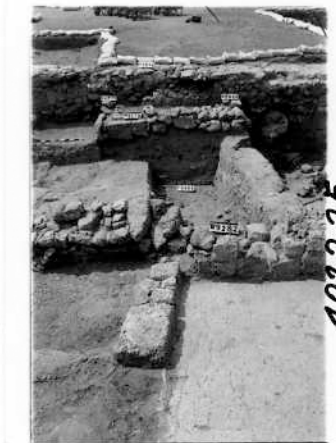
Sketch plan



Section



Section



Locus W 9282	Dor 1993	Fld G ₁	Sq AH/A134	Loc. type CARD 5 OF 6 WALL CARD
Open 02/07/93	Date	High at 15.46 N ₁	Low at 15.40 S ₁	Seals: UNEXCAVATED
Close 06/08/93		15.13 W ₁	14.44 C ₁	Sealed by:
Floor: type				Locl
Length 4.9	Width 0.9	Vol		above
Value	Remove	Drawn? YES		below
Photo # (1) SEE ISRA	Photo # (2) SEE ISRA			
Written by: SER	Checked by: JR2			

Unit	Phase	Stage	Stratum	PoM
-------------	--------------	--------------	----------------	------------

Summary

Opened: CONTINUED EXCAVATION AT BEGINNING OF SEASON

Limits (N) SEE PREVIOUS SEASONS' CARDS

(S) SEE PREVIOUS SEASONS' CARDS

(E) SEE PREVIOUS SEASONS' CARDS

(W) SEE PREVIOUS SEASONS' CARDS

Closed: NOT CLOSED - END OF SEASON

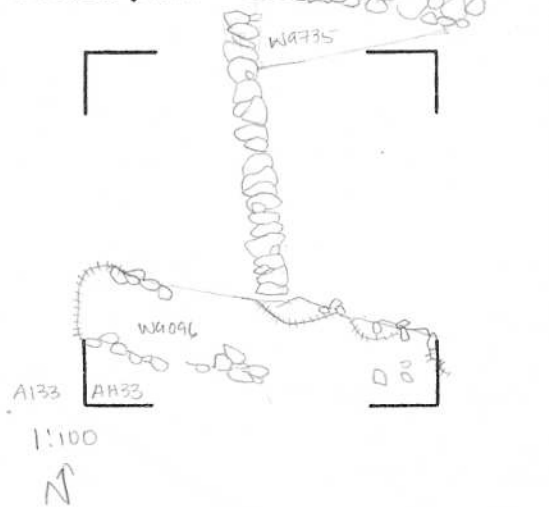
Matrix: SEE PREVIOUS SEASONS' CARDS

Relations: MUDBRICK WALL [W9735] APPEARS TO BE, IN PART, FOUNDATIONAL FOR [W9282].

THE MUDBRICKS SEEM TO HAVE BEEN CUT AND ARE AT ODD ANGLES IN THE FILL SECTION BELOW [W9282].

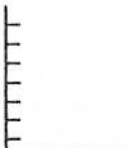
Additional Observations/Value: VALUABLE PERSIAN WALL.

Sketch plan

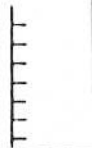


102215

Section



Section



102236

Photo #102215 is of
AH/AG 33

Photo #102236
is AH33

Neither photo shows W9735

Locus WJ 9282	Dor 1917	Fld G	Sq AH,34/AG,34	Loc. type ^{0ARD 6 OF 6} WALL
Open 03/07/97	High at 115.913	Low at 115.410	Seals: _____	
Close 11/08/97	CIN 114.71	CIN 114.33	Sealed by: _____	
Floor: type _____	Vol _____	Drawn? YES	Loci SEE PREVIOUS SEASONS CARDS	
Length 7.4	Width 0.9		above _____	
Value 11	Remove _____		Loci UNEXCAVATED	
Photo #(1) 167038	Photo #(2) 167039		below _____	
Written by: M.A.S.	Checked by: J.R.Z.			

Unit _____	Phase _____	Stage _____	Stratum _____	PoM _____
Summary _____				

Opened: SEE PREVIOUS SEASONS CARDS.

Limits (N) SEE PREVIOUS SEASONS CARDS. ALSO: L18210, ^{L18202}L18213, L18204, L18211, L18222, L18238, L18255, W18248, L18303, L18258, L18287, L18288, L18301

(S) SEE PREVIOUS SEASONS CARDS

(E) SEE PREVIOUS SEASONS CARDS

(W) SEE PREVIOUS SEASONS CARDS

Closed: NOT CLOSED; END OF SEASON.

Matrix: SEE PREVIOUS LOCUS CARDS FOR PHASES A AND B. FURTHER DISTINCTIONS IN WALL MATRIX NOTED THIS YEAR: THERE SEEMS TO BE TWO DIFFERENT PARTS TO W9282: WEST OF ROBBERT TRENCH L18202 (FROM NOW "WEST PHASE") AND EAST OF L18202 (FROM NOW "EAST PHASE") GENERALLY, WEST PHASE IS NOT AS WIDE AS EAST PHASE WEST PHASE HEADS OFF TO THE NW FROM THE EAST PHASE WHICH IS MORE DIRECTLY ALIGNED EAST. (CONTINUED IN RELATIONS)

Relations: SEE PREVIOUS SEASONS CARDS.

N: W9282 IS REACHED BY L18210 MAKEUP OF F9231. W9282 IS REACHED BY L18202, ROBBERT TRENCH. W9282 PROBABLY CUTS L18213 ^{AND F18213} BECAUSE OF THE IRON AGE POTTERY READINGS OF L18213. W9282 IS REACHED BY L18204, MAKEUP OF F9428. W9282 CUTS L18211, L18222, ^{F18222}L18238, ^{F18238}L18255, ^{F18258}L18258, L18287, L18288 AND F18288 AS THESE HAVE IRON AGE POTTERY AND W9282 SEEMS TO BE A PERSIAN FOUNDATION. W9282 IS ABUTTED BY W18248 AND IS REACHED BY THE SEALED MATERIAL BELOW W18248, L18303. W9282 PROBABLY CUTS L18301. *W9282 IS POSSIBLY BUILT ON TOP OF F18213. F18213 COULD NOT BE TRACED ALL THE WAY TO W9282 BUT STOPS 1/2M FROM W9282. **

Note: W9515 and W9289 do not abut or dovetail; there is a ca 10cm gap in the cornice where they should have met. THE SOUTH SIDE OF THE WHOLE WALL FLOATS. OR SHAPED FIELD STONES

MATRIX CONTINUED: ALSO, BOTH PHASES HAVE TWO FACES OF ASHLARS WITH 10-15CM FIELD STONE PACKING. THE SIZE OF THE DIFFERENT EAST PHASE: 4.15M LONG 80CM-1M WIDE LEVELS: TOP: 15.93W 15.33E BASE: 14.71W 14.55E 14.55E 14.33E

THERE ARE 5-8 COURSES OF MOSTLY HEADER ASHLARS ON THE N FACE ARRANGED NEATLY WITH CONCRETE ABOVE THE LEVEL OF WHERE F9428 IS ATTACHED. THE ASHLARS ARE 12-20CM WIDE 18-25CM HIGH. THE EAST PART SINKS DEEPER THAN THE REST OF EAST PHASE. ON THE SOUTH FACE, THERE ARE IRREGULAR COURSES WITH MORE FIELD STONES.

WEST PHASE: 3.25M LONG 70-80CM WIDE. LEVELS: TOP: 15.06N 15.34SW BASE: 14.53E 14.52W 14.54W 14.53E

THERE ARE 4-5 COURSES WITH ASHLARS & FIELD STONES AS DESCRIBED ABOVE. THE ASHLARS ARE 8-19CM WIDE 15-30CM HIGH AND ARRANGED NEATLY EXCEPT FOR THE 4th AND 5th COURSES ON THE N FACE. SOME OF THE ASHLARS ARE ODDLY SHAPED; ONE HAS A HOLE IN IT - OBVIOUS REUSE.

Additional Observations/Value: VALUABLE WALL - COULD BE PERSIAN. Additional photos: 166739

** IF W9282 IS REMOVED THEN WE WILL BE ABLE TO TELL IF W9282 IS BUILT ON TOP OF F18213.



166769



166768



167106



167530



167528



167040



167523



167529



167508

W9282



167502



167108

W9282



167492



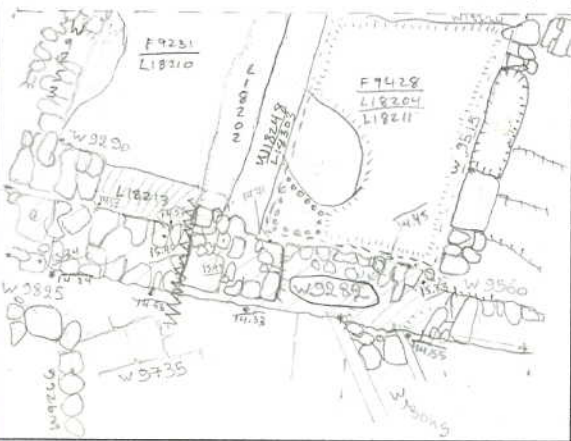
166558



166561



167522



Legend for the architectural plan:
[Hatched box] = W9282
--- = F 9428, L18204, L18211
--- = L18222, L18238, L18287, L18288, L18301
--- = L18255, L18258
--- = LINE BETWEEN WEST AND EAST PHASE



166739



166723