

TEL DOR

19 88

field

G

square

A H 3 4

phase (in area):

LOCUS

L 9281

date opened

21/07/88

level

16.00

date closed

21/07/88

level

15.90

floor level

type of locus

ROBBER TRENCH
ABOVE WALL 9282a

loci above

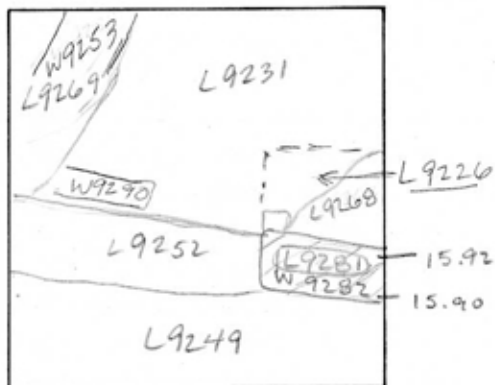
L 9226

loci below

W 9282

sealed by

graphic description



Lxxxx = locus above L4444

section

photos

- reason for opening
- definition / limits
- reason for closing
- relation to other elements
- working photos, nos:
- publication photos
- architects permission

written by A.M. ABRALDES checked by J Zorn

final locus no.

arch. unit / logical area

stage (in sq.)

final STRATUM

Summary:

Description:

OPENED: UPON DISCOVERY OF CHANGE IN SOIL FROM
HARD DARK BROWN WITH RUBBLE TO HARD BROWN-BLACK

DEFINITION / LIMITS: BOUNDED BY [L9268] TO THE NORTH,
[L9252] TO THE WEST, [L9249] TO THE SOUTH, AND
BY EAST BANK.

MATRIX: MEDIUM-PACKED BROWN-BLACK SOIL WITH CLODS
SMALL ROCKS.

CLOSED: [L9281] COMES DOWN UPON WALL: [W9282].

RELATION TO OTHER ELEMENTS: [L9281] PERHAPS REPRESENTS
MATERIAL AT BOTTOM OF ROBBER TRENCH [L9226];
CREACHES ROBBER TRENCH [L9252] TO THE WEST;
CUTS [L9249] TO THE SOUTH; CUTS [L9268] TO
THE NORTH.

9281 = 9230 = 9252 = 9226 = 9268 = 9294
robber trench of W9282

