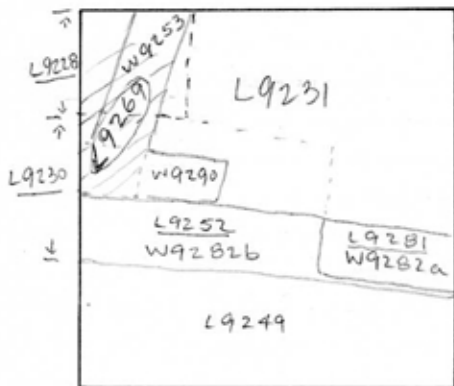


TEL DOR 19 88 field G square A.H.3.4 phase (in area): LOCUS L 19269
 date opened 25/07/88 level 1607 date closed 26/07/88 level 1544 floor level _____ type of locus ROBBER TRENCH ABOVE W9253 AND W9290
 loci above L9228 L9230 Probably not! loci below W9253 W9290 sealed by _____

graphic description



final locus no.	arch. unit / logical area	stage (in sq.)	final STRATUM

Summary:

Description: OPENED: UPON REACHING NORTHERN END OF [W9253] BELOW [L9228].

DEFINITION / LIMITS: BOUNDED ON EAST BY [L9231] AND EASTERN END OF [W9290] BELOW [L9231]; ON THE SOUTH BY [L9252] AND [W9282b] BELOW [L9252]; ON THE NORTH BY TOP COURSE OF [W9253]; BOUNDED BY WEST BALK.

MATRIX: LOOSE GREYISH-BROWN SOIL WITH FEW SMALL CLODS, TESSERAE.

CLOSED: UPON REACHING SOUTHERN END OF [W9253], AND WESTERN END OF [W9290]

section

RELATION TO OTHER ELEMENTS: [L9269] CUTS [L9231]; REACHES [L9252] AND [W9282b] BELOW [L9252]. [L9269] IS A CONTINUATION OF

photos

- reason for opening
- definition / limits
- reason for closing
- relation to other elements
- working photos, nos:
- publication photos
- architects permission

written by AM. ABRALDES checked by J. Zorn

ROBBER TRENCH [L9228] OVER [W9253] AS WELL AS THE ROBBER TRENCH OVER WESTERN PORTION OF [W9290]. [L9228] AND [L9269] MAY REPRESENT CONTEMPORARY ROBBING OPERATIONS WITH [L9230] + [L9252].

9269 = 9228 = 18201 robber trench of W9253

