

TEL DOR

19

88

field

G

square

AI.3.3

phase (in area):

LOCUS W 92.62

date opened

19/07/88

level

1436

date closed

12/08/88

level

floor level

type of locus

WALL

loci above

9236

loci below

sealed by

graphic description

final locus no.

arch. unit / logical area

stage (in sq.)

final STRATUM

Summary:

Description:

REASON FOR OPENING: MUDBRICK WALL DEFINED UNDER L 9236. PIT 9260 ALSO DEFINED IN SOUTHERN HALF OF L 9236 NECESSITATING DIVISION OF L 9260, 9261 (MUDBRICK MATERIAL (FACE OF W 9262?)) AND W 9262.

DEFINITION/LIMITS: MUDBRICK WALL DEFINED ON THE NORTH BY L 9308, L 9275, L 9309 AND ON THE SOUTH BY L 9261, ON THE EAST BY THE RAULK UNDER L 9111 (DRAIN) AND ON THE WEST BY THE RAULK DIVIDING AJ 33 AND AI 33

MATRIX MUDBRICK WALL OF DARK BROWN MUDBRICK MATERIAL WITH TWO 25x35cm BRICKS VISIBLE ON THE SURFACE AND A FOCCA LINE OF WHITE PLASTER VISIBLE IN THE WESTERN SECTION. L 9261 MAY ACTUALLY BE THE FACE OF W 9262^{IN} WHICH WE HAVE BEEN UNABLE TO FIND BRICKS.

REASON FOR CLOSING: END OF SEASON - NOT CLOSED.

RELATION TO OTHER ELEMENTS: MATERIAL OF L 9261 REACHES W 9262. AS PREVIOUSLY STATED L 9261 MAY BE THE FACE OF W 9262. FLOOR 9296 REACHES L 9261 STRENGTHENING THIS HYPOTHESIS. W 9275 DEFINITELY REACHES W 9262 AS DO LOCI 9308 AND 9309. THE MATERIAL OF W 9262 AND L 9261 ORIGINALLY EXTENDED INTO AJ 33 BUT WAS CUT BY PIT 9067.

section

photos

- reason for opening
- definition / limits
- reason for closing
- relation to other elements
- working photos, nos:
- publication photos
- architects permission

written by DC STANFILL

checked by



TEL DOR

1989

field

G

square

A133

phase (in area):

LOCUS

W 92.62

date opened

08/07/89

level

14.31

date closed

04/08/89

level

13.64

floor level

type of locus

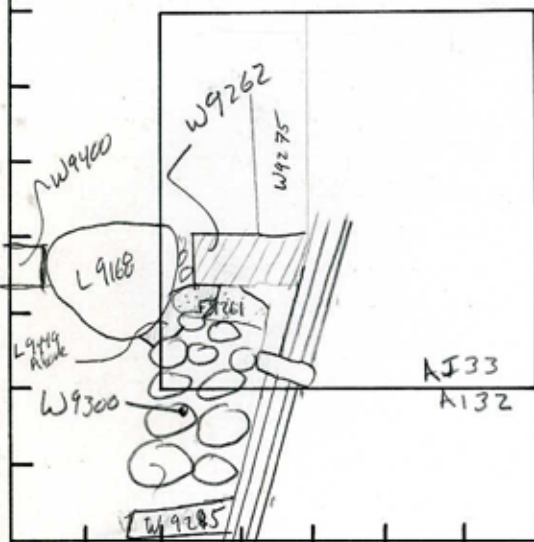
Mudbrick wall

loci above

loci below

sealed by

graphic description



section

photos

- reason for opening
- definition / limits
- reason for closing
- relation to other elements
- working photos, nos:
- publication photos
- architects permission

written by R. Lindstromchecked by JZorn

final locus no.

arch. unit / logical area

stage (in sq.)

final STRATUM

Summary:

Description: opened: To Re-Trim [W9262] began 1988.

Def/Lim - SAME AS PREVIOUS

Matrix 1 - SAME

closed 1 - Not closed

Relations: [W9262] seems to sit on Ash Plaster Floor, [F9261], which in turn lies on [W9300] cut by Pit [L9168], in which much Mud Brick Debris Floats. This wall has the same Alignment as [W9400], and Bottom level of Mud Brick is about the same ([W9400] - 13.66). It is probable that these two walls were originally connected, until cut by Pit [L9168]. [W9285] is associated (contemporary) to this wall, as they are parallel ^{and} surfaces which lay on [W9300].

[W9262] is Reached By Mud Brick Material [L9449], which may float in Pit [L9168].

LOCUS

W 19262

BASKET LIST

basket no.	level	str def	cont	R +	-	-	-	-	-	-	-	-	-	-	-	-	-	-	-	-	-	-	-	-	-	-	-	-	-	-	-	-	-	-	-	-	-	-	-	-	-	-	-	-	-	-	-	-	-	-	-	-	-	-	-	-	-	-	-	-	-	-	-	-	-	-	-	-	-	-	-	-	-	-	-	-	-	-	-	-	-	-	-	-	-	-	-	-	-	-	-	-	-	-	-	-	-	-	-	-	-	-	-	-	-	-	-	-	-	-	-	-	-	-	-	-	-	-	-	-	-	-	-	-	-	-	-	-	-	-	-	-	-	-	-	-	-	-	-	-	-	-	-	-	-	-	-	-	-	-	-	-	-	-	-	-	-	-	-	-	-	-	-	-	-	-	-	-	-	-	-	-	-	-	-	-	-	-	-	-	-	-	-	-	-	-	-	-	-	-	-	-	-	-	-	-	-	-	-	-	-	-	-	-	-	-	-	-	-	-	-	-	-	-	-	-	-	-	-	-	-	-	-	-	-	-	-	-	-	-	-	-	-	-	-	-	-	-	-	-	-	-	-	-	-	-	-	-	-	-	-	-	-	-	-	-	-	-	-	-	-	-	-	-	-	-	-	-	-	-	-	-	-	-	-	-	-	-	-	-	-	-	-	-	-	-	-	-	-	-	-	-	-	-	-	-	-	-	-	-	-	-	-	-	-	-	-	-	-	-	-	-	-	-	-	-	-	-	-	-	-	-	-	-	-	-	-	-	-	-	-	-	-	-	-	-	-	-	-	-	-	-	-	-	-	-	-	-	-	-	-	-	-	-	-	-	-	-	-	-	-	-	-	-	-	-	-	-	-	-	-	-	-	-	-	-	-	-	-	-	-	-	-	-	-	-	-	-	-	-	-	-	-	-	-	-	-	-	-	-	-	-	-	-	-	-	-	-	-	-	-	-	-	-	-	-	-	-	-	-	-	-	-	-	-	-	-	-	-	-	-	-	-	-	-	-	-	-	-	-	-	-	-	-	-	-	-	-	-	-	-	-	-	-	-	-	-	-	-	-	-	-	-	-	-	-	-	-	-	-	-	-	-	-	-	-	-	-	-	-	-	-	-	-	-	-	-	-	-	-	-	-	-	-	-	-
------------	-------	------------	------	--------	---	---	---	---	---	---	---	---	---	---	---	---	---	---	---	---	---	---	---	---	---	---	---	---	---	---	---	---	---	---	---	---	---	---	---	---	---	---	---	---	---	---	---	---	---	---	---	---	---	---	---	---	---	---	---	---	---	---	---	---	---	---	---	---	---	---	---	---	---	---	---	---	---	---	---	---	---	---	---	---	---	---	---	---	---	---	---	---	---	---	---	---	---	---	---	---	---	---	---	---	---	---	---	---	---	---	---	---	---	---	---	---	---	---	---	---	---	---	---	---	---	---	---	---	---	---	---	---	---	---	---	---	---	---	---	---	---	---	---	---	---	---	---	---	---	---	---	---	---	---	---	---	---	---	---	---	---	---	---	---	---	---	---	---	---	---	---	---	---	---	---	---	---	---	---	---	---	---	---	---	---	---	---	---	---	---	---	---	---	---	---	---	---	---	---	---	---	---	---	---	---	---	---	---	---	---	---	---	---	---	---	---	---	---	---	---	---	---	---	---	---	---	---	---	---	---	---	---	---	---	---	---	---	---	---	---	---	---	---	---	---	---	---	---	---	---	---	---	---	---	---	---	---	---	---	---	---	---	---	---	---	---	---	---	---	---	---	---	---	---	---	---	---	---	---	---	---	---	---	---	---	---	---	---	---	---	---	---	---	---	---	---	---	---	---	---	---	---	---	---	---	---	---	---	---	---	---	---	---	---	---	---	---	---	---	---	---	---	---	---	---	---	---	---	---	---	---	---	---	---	---	---	---	---	---	---	---	---	---	---	---	---	---	---	---	---	---	---	---	---	---	---	---	---	---	---	---	---	---	---	---	---	---	---	---	---	---	---	---	---	---	---	---	---	---	---	---	---	---	---	---	---	---	---	---	---	---	---	---	---	---	---	---	---	---	---	---	---	---	---	---	---	---	---	---	---	---	---	---	---	---	---	---	---	---	---	---	---	---	---	---	---	---	---	---	---	---	---	---	---	---	---	---	---	---	---	---	---	---	---	---	---	---	---	---	---	---	---	---	---	---	---	---	---	---	---	---	---	---	---	---	---	---	---	---	---	---	---	---	---	---	---	---	---	---	---	---	---	---	---	---	---	---	---	---	---	---	---	---	---	---	---

(entered)

Locus WJ 9262	Dor 19 92	Fld G ₁	Sq A I 33	Loc. type Card 3. Mudbrick wall
Open 09/07/92	High at 14.27 E ₁	Low at 13.95 W ₁	Seals: _____	
Close 14/08/92	13.45 E ₁	13.41 W ₁	Sealed by: _____	
Floor: type _____	_____	_____	Locl _____	
Length 3.2	Width 0.7	Vol _____	above _____	
Value 1	Remove _____	Drawn? YES	_____	
Photo # (1) 86792	Photo # (2) 8678 87325	Locl _____		
Written by: RAT/RSS	Checked by: JRZ	below _____		

Unli _____	Phase B-9(6)	Stage _____	Stratum _____	PoM _____
-------------------	---------------------	--------------------	----------------------	------------------

Summary

Opened: See card 1

Limits (N) L9815, L9823, L9836, L9755, L9808, and L9835
(S) L9807, L9814, L9824
(E) _____
(W) _____

Closed: End of Season - Not closed

Matrix: Mudbrick superstructure consists of ca. 4 1/2 courses of bricks, tapering to ca. 1 course at the west end; stone socle preserved to 2 courses of fist to double-fist sized stones to the south

Relations: North relations: L9815, L9823, L9836, L9755, and L9808 all reach the N. face of W9262. L9835 is probably cut by the stone foundation for W9262. W9262 may be a continuation of W9729 - See 1992 W9729 card for discussion. Floors 9823 and 9836 almost certainly reached the stone socle for W9262. The earlier floor, 9836, appears to be contemporary with the destruction to the E. associated with the human skeleton.

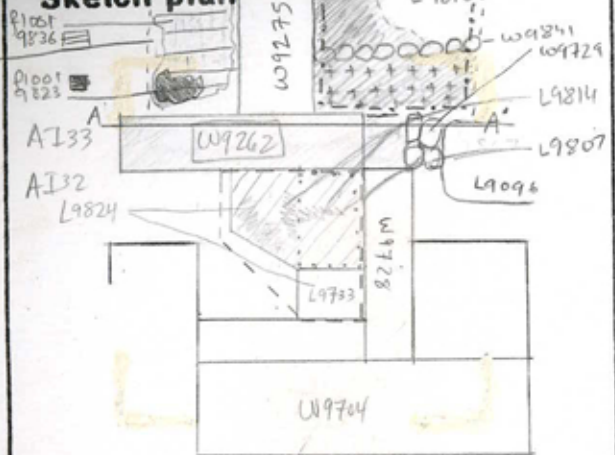
To the South, L9807 reaches W9262, and is probably debris (at least in part) from W9262. The fill of L9814 reaches the mudbrick superstructure of W9262 and is probably (in part) debris from it. F9814 probably reaches the socle of W9262, although the surface of F9814 could not be traced up to the wall. L9824 may reach W9262. F9824 is uncertain, and its relations (if any) to W9262 are uncertain until further excavation.

Photos: 86794-86797

Additional Observations/Value: In mudbrick wall making corner with W9275 and continuing from W9729 - probably reached by floors 9823 and 9836 - Very High Value

Sketch plan

L9815,
L9723,
L9836



L9824 --- F9824
 L9814 ▨ F9814
 L9807 ...
 L9755 - - - -
 L9835
 L9806

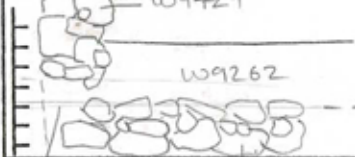
1:100 N↑

Photo

Photo



Section A-A' - facing S.



Mudbricks below W9729
 Stone socle for W9262

Section



Locus W 9262	Dor 19 93	Fld 6	Sq 11 33	Loc. type Wall entered
Open 05/07/93	High at 14.27 E	Low at 13.95 W	Seals: _____	
Close 03/08/93	12.93 W	12.90 E	Sealed by: _____	
Floor: type _____	Width 0.8	Vol _____	Locl _____	
Length 5.8	Remove 1/1/1	Drawn? YFS	above _____	
Value 11	Photo # (1) _____		Photo # (2) _____	
Written by: RSS		Checked by: JRZ		Locl _____
				below _____

Unit	Phase	Stage	Stratum	PoM
Summary				

Opened: Beginning of Season

Limits (N) F9955 and L9971

(S) L/F9879, L/F9953, L9978 & L9980

(E) See previous season card

(W) See card for A533/1993

Closed: End of Season - Not closed

Matrix: For phase A and B see previous season cards. Phase C is a mudbrick wall cut by the socle (phase B). Phase D is the lower part made up of head size and double head-size rats and so for three courses high.

Relations:

To the N. F9955 reaches phase D of W9262. L9971 also reaches phase D of W9262. The grape press installation (F9928 and F/L9971) also relates to this phase of the wall.

To the S. L/F9879 was cut by phase B of W9262. L/F9953 was also probably cut by phase B of W9262. Both these floors probably reached phase C of the wall. The relationship between L9980 and W9262 (phase C) is uncertain though L9980 probably reached phase C of W9262. The N. tip of L9978 also probably reached phase of W9262.

Phase B elevations: hi-13.89; lo-13.46.

Phase D highs: 13.36 to 13.20.

Phase D also forms one wall of the doorway or passageway ^{with W9960} found when excavating L/F9955.

Additional Observations/Value: Very important for linking SE + NE sections of arechib.

Sketch plan




Section facing S



Section



Locus <u>W 9262</u>	Dor 19 <u>913</u>	Fld <u>91</u>	Sq <u>AJ32</u>	Loc. type <u>WALL CARD 3 extend</u>
Date	High	at	Low	at
Open <u>2/2/07/93</u>	<u>12.80</u>	<u>E</u>	<u>12.86</u>	<u>W</u>
Close <u>3/0/07/93</u>	<u>12.86</u>	<u>W</u>	<u>12.86</u>	<u>E</u>
Floor: type <u>1</u>	Width <u>1.3</u>		Vol 	
Length <u>1.3</u>	Remove <u>1/1/1</u>		Drawn? <u>1/1</u>	
Photo #(1) <u>101877</u>	Photo #(2) <u>101878*</u>			
Written by: <u>Cheryl Rice</u> <u>CLIR</u>	Checked by: <u>JRZ</u>			

Unlt	Phase <u>7-9 (+6?)</u>	Stage	Stratum	PoM
------	------------------------	-------	---------	-----

Summary

Opened: see AJ33 card. Currently, the continuation west of W9262 was revealed below pit L9921.

Limits (N) W9140 N; unexcavated debris below W9066 and E of W9140 W

(S) W9915 and unexcavated debris below and E of W9140

(E) See earlier card

(W) unexcavated material at W limit of pit L9921

Closed: at end of season - Not closed

Matrix: 1 course of large field stones revealed on top of wall continuation. Head and fist-sized stones. One double head-size stone, possibly not in situ. Wall seems to be 2 stones wide.

Relations: Pit L9921/L9168 cut the upper courses of [W9262]. Relations below [W9262] uncertain because excavation is only at top preserved course.

To the N: W9140 (single stone wide wall) abuts [W9262]

To the E: [W9262] continues into AJ32/33

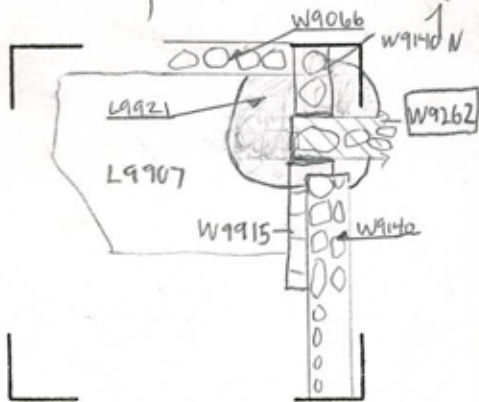
To the S: W9915 (mudbrick wall, 1 brick wide) abuts [W9262]

The relations of the small unnumbered debris loci below pit L9921 to [W9262] are not clear. Since no floor reaching W9915 has been found in L9907 (excavated to a lower depth than pit L9921), and W9915 was in use with [W9262], the debris to the W probably reaches W9262. The relations of the debris N and S of [W9262] to [W9262] can only be determined upon excavation in these areas.

* 879-890

Additional Observations/Value: W9262 is a major E-W wall; its connection to W9140 N, and W9915 is highly important.

Sketch plan for W9262



101883



101884



101886



101887



101889

Locus WJ 9262	Dor 19 ₄	Fld G ₁	Sq AIB3 ₁	Loc. type Wall
Open Date 0.5/17/94	High at 1.4-2.7	Low at 1.3-9.5	Seals: _____	
Close Date 0.5/18/94	Fi 1.3-0.9	Wi 1.3-0.16	Sealed by: _____	
Floor: type Length 5.3	Width 0.8	Vol _____	Loci above _____	
Value 1	Remove _____	Drawn? Y, R, S	Loci below _____	
Photo #(1) _____	Photo #(2) _____			
Written by: J.R.12	Checked by: J.R.12			
Unit _____	Phase B-9(+6.?)	Stage _____	Stratum _____	PoM _____

Summary

Opened: At beginning of season was already exposed.

Limits (N) W9986, 18021, 18040,
 (S) 18012, 18013, 18026, 18035, 18055, 18056, 18057, 18087, 18090, 18075
 (E) see previous cards
 (W) see previous cards

Closed: Not closed, end of season, wall not yet floating

Matrix: See previous cards. In '94 it was determined that W9262 had an earlier mulbrick on stone phase than the one already excavated. 2 courses of bricks could be made out on the north face, though no individual bricks. This was founded on 2-3 courses, so far, of fist to double fist size cobbles. The earlier, lower W9262 is only 50 cm wide and is not visible to the south below the later upper phase.

Relations: For relations above, E and W see previous cards. All relations in '94 are to N and S.
 On the North the relations to W9986 are obscured by pit L9168 and several years of erosion on W9986.
 L18040 reaches the lower brick phase of W9262. F18021 below 18040 also reaches the lower mulbrick phase. L18067 apparently reaches the lower stone phase of W9262, as does F18067.
 On the South destruction 18075, 18087 and 18090 all continue below the upper stone phase of W9262; presumably they reach the lower brick and stone phase; also presumably F18075+18087+18090 will reach the lower stone phase of W9262. F/L 18012 (chamber floor) reaches the upper stone phase of W9262; 18013 likewise reaches the upper stone phase, as 18026 also may, though this is less clear. L18035 at its highest point may be cut by the upper stone phase of W9262; the lower part of 18035 and F18035 continue into the debris below the upper stone phase of W9262. 18055, 18056 and 18057 (below 18035) also continue into the debris below the upper stone phase.

Note: The bottom of the stone socke/foundation of W9275 seems to float above the top level of the lower mulbrick phase of W9262; however, the juncture of W9262 + W9275 is obscured by a debris pedestal use to support the Area G sun shade tent pole in '94. This pedestal will have to be removed to clarify this connection.

Additional Observations/Value: Lower mulbrick and stone phase reached by floor on north which may relate to destruction level floor to south

Locus W 9262	Dor 1977	Fld G ₁	Sq A333	Loc. type Wall (cont. card)
Open	Date	High at	Low at	Seals: _____
0.7	07/07/77	14.27	13.95	Sealed by: _____
Close		13.11	12.67	Loci _____
0.8	08/07/77			above _____
Floor: type	Width	Vol	Drawn? Yes	Loci _____
Length 5.3	0.8			below _____
Value	Remove			
Photo #(1) see Isra	Photo #(2)			
Written by: JCM	Checked by: JRZ			

Unit	Phase 7-9 (+65??)	Stage	Stratum	PoM
------	-------------------	-------	---------	-----

Summary _____

Opened: See previous cards

Limits (N) L18232, L18246, L18252

(S) L18216, L18217, W18049

(E) Ball

(W) See previous cards

Closed: Not closed, end of season reached. Wall now floating

Matrix: See previous cards. We exposed a total of 3-4 courses of the lowest stone wall. The lowest course is made of 20x30cm² unworked and or two 50x25 cm² shaped stones. 7x13 cm.

Relations: Above: See previous cards

North: L18232 / F18232 reach W9262.

L18246 / F18246 reach W9262.

L18252 reaches W9262.

South: L18216 (stone slab floor) reaches W9262. W18049 abuts W9262

L18217 reaches W9262, and L18243 also reaches the wall.

East/West: See previous cards.

Below: West of W9262, F18252 = F18221 extends under W9262

Additional Observations/Value: High Value.



16627002



167047



167048



167633

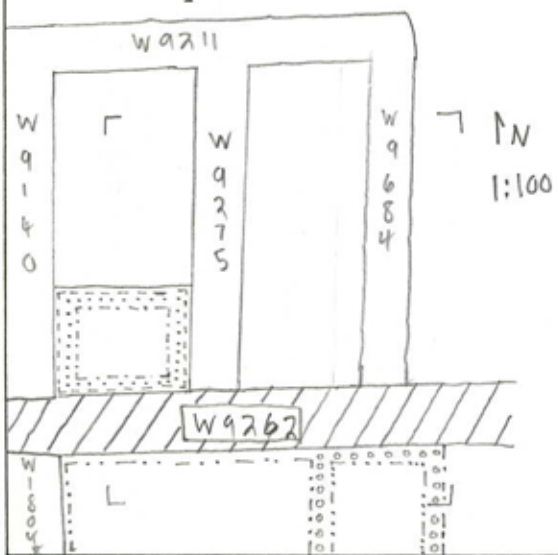


167044

Locus

WJ 1262

Sketch plan



166410

Photo



166624



166581



166282



166582

Section



166284



167646

- L18232
- L18246
- L18252
- L18216
- L18217
- L18243

Locus WJ 9962	Dor 19 9.8	Fld G ₁	Sq A.I 33	Loc. type WALL (CONTINUATION CARD)
Open	Date 0.7.10.7/9.8	High at 14.13 C ₁	Low at 13.57 E ₁	Seals: _____
Close	0.9/10.7/9.8	13.11 E ₁	12.67 W ₁	Sealed by: _____
Floor: type	C ₁	13.00 C ₁	13.00 C ₁	Loci _____
Length 2.7	Width 0.7	Vol _____	Drawn? YES	above _____
Value 115	Remove 1/1/1			below _____
Photo #(1) 175164	Photo #(2) 175165			Loci _____
Written by: KVL	Checked by: JRZ			below _____

Unit _____	Phase _____	Stage _____	Stratum _____	PoM _____
------------	-------------	-------------	---------------	-----------

Summary

Opened: SEE PREVIOUS CARDS (NOW OPENED FOR REMOVAL OF STAGE C AND D)

Limits (N) SEE PREVIOUS CARDS

(S) _____

(E) _____

(W) _____

Closed: NOT CLOSED (CAME DOWN ON STAGE D)

Matrix:

STAGE C: DARK BROWN AND HEAVY MUDBRICK MATERIAL STAGE D: DOUBLE HEADED AND FIST SPREAD STONES WITH SOME REED MATTING AND WHITE FLOOR MATERIAL IN BETWEEN, STAGE D IS BASICALLY TWO EXTERIOR LINES OF STONE FACING WITH STONE PACKING IN BETWEEN.

Relations:

SEE PREVIOUS CARDS

IN THE EASTERN HALF OF THE WALL, WE'VE UNCOVERED A POSSIBLE DOORWAY WHICH WAS NOTICED BEFORE THE DOORWAY (97 cm E-W BY 70 cm N-S) HAD SOME FLOOR MATERIAL IN ITS LOWEST POINTS. IF THIS IS A DOORWAY, IT INDICATES THAT AT SOME POINT THERE WAS DIRECT ACCESS FROM N-S BEFORE THE DOOR WAS BLOCKED UP THE FLOOR MATERIAL THEN RELATES POSSIBLY TO FLOOR 9955 (NORTH OF WJ 9262) AND TO FLOOR 9797-18068 (SOUTH), REGARDING THE LEVELS.

THIS DOORWAY SEEMS TO HAVE CONNECTED THE ROOM WITH THE BREAD TREADING TROUGH ON THE SOUTH WITH THE ROOM WITH THE "TREADING(?)" INSTALLATION TO THE NORTH.

PHOTO'S: 175166, 175167

Additional Observations/Value:

HIGH VALUE, IMPORTANT DOORWAY

UNCOVERED

175166



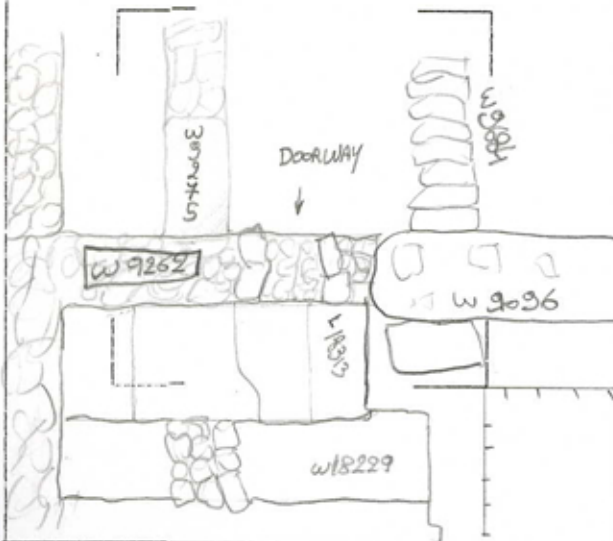
175165



LOCUS

W 9262

Sketch plan



175164



Section A-B



175167



Section

