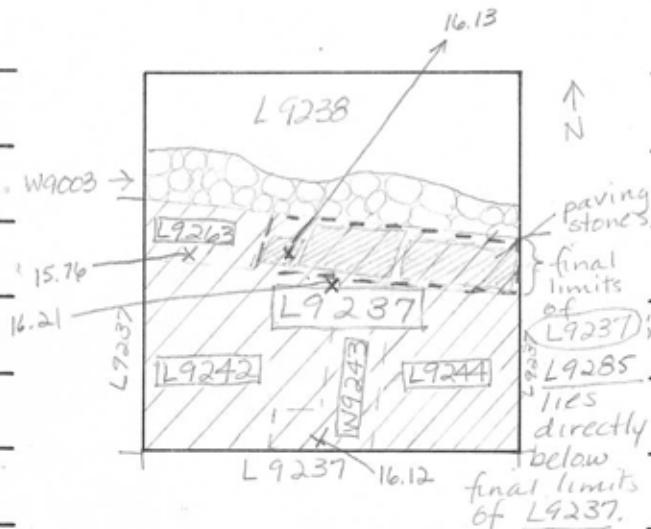


TEL DOR 19 88 field G square A.K.3.3 phase (in area): 1a / 2?? LOCUS L9.237

date opened 14 / 07 / 88 level 16.21 date closed 21 / 07 / 88 level 15.95 floor level 15.95? - 15.99 type of locus Fill down to paving stones / possible subfloor

loci above L9.2.20 loci below L9.242 W9243 sealed by L9.244 L9.263 L9.285

graphic description



section

photos

- reason for opening
- definition / limits
- reason for closing
- relation to other elements
- working photos, nos: []
- publication photos
- architects permission

written by A. Capel



ask upward

checked by J. Zern

final locus no. arch. unit / logical area stage (in sq.) final STRATUM

Summary:

Description:

Opened: W9003 split Square AK33 into 2 loci: L9237 & L9238 continue excavation of Square AK33

Definition/Limits: L9237 extends to W9003 and to the W, E, & S banks.

Reason for Closing: L9237 came down on paving stones (here in reuse from some other building: speculation is that it might be from a vault) & a possible Kurkar subfloor. These are designated as the floor of L9237

Relation to other Elements: Excavation revealed wall W9003 which cuts L9237 & L9238. Below L9237 lies the header wall W9243. To the SW & SE of W9243 are the fills L9242 & L9244. L9263 includes the material lying directly under the possible Kurkar subfloor (lying under, & in a continuing line to the W, of the 3 paving stones) of L9237. L9285 lies below the paving stones. Elevations of fills L9242 & L9244 are approx. 16.20. The paving stones may be a continuation of the floor of the plaza, floor 9000

Matrix: Fill down to pavement & Kurkar subfloor. Light brown soil containing many rocks, & few fragments of roofing tile & tesserae.

See Note on reverse. →

